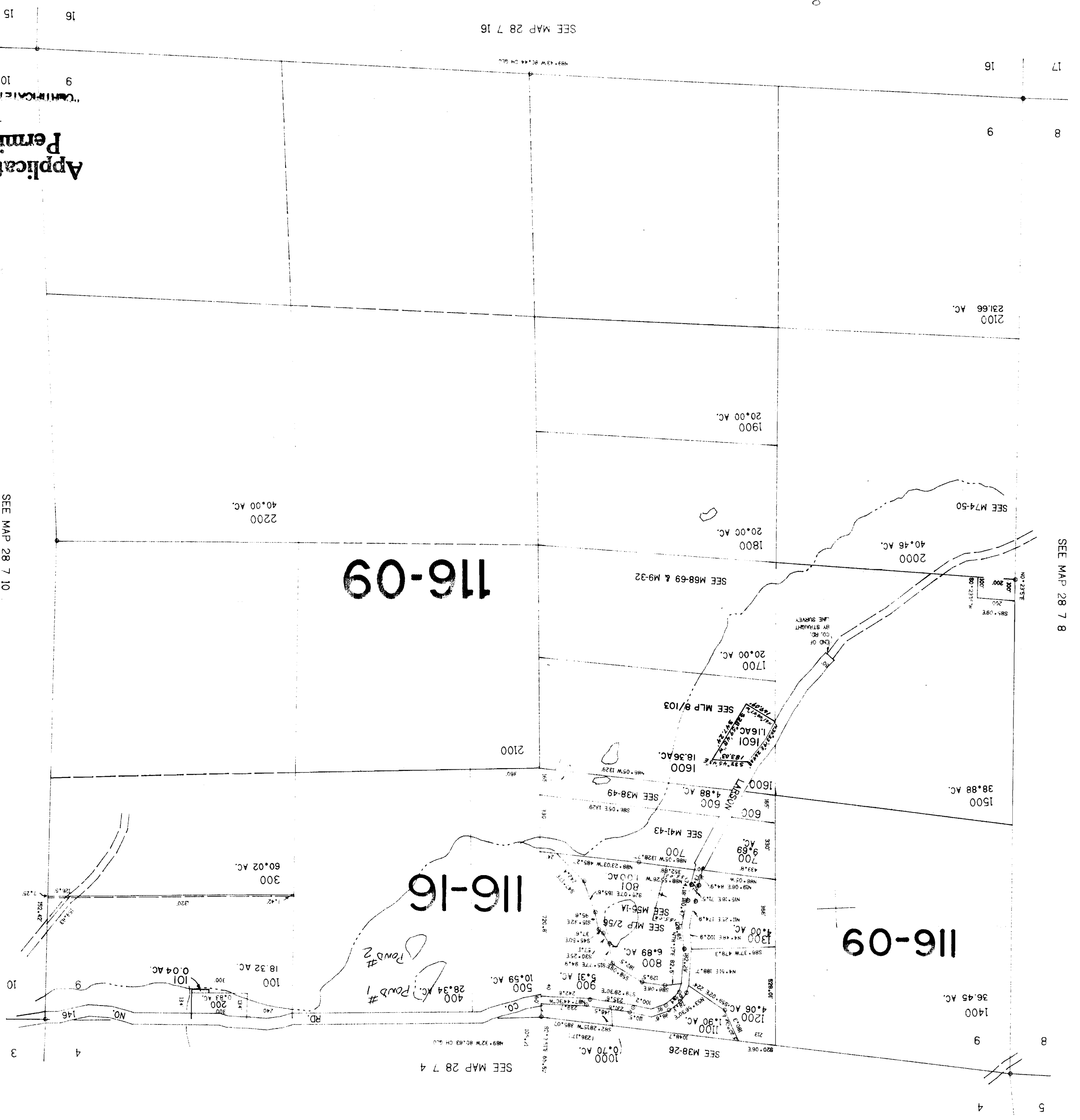


SECTION 9 T.28S. R.7W. W.M. DOUGLAS COUNTY

THIS MAP WAS PREPARED FOR ASSESSMENT PURPOSE ONLY.

1"=400'



Application No. 2-74491
Permit No. 69223

SEP 12 1994

28 7 9

557.000

1190.000

SEE MAP 28 7 10

SEE MAP 28 7 4

SEE MAP 28 7 8

SEE MAP 28 7 16

COMMISSION NO. 69223

15 16

16 17

9 8

9 8

4 5

10

3

4

9

10

No Final Proof Map available

No Permit Map available