

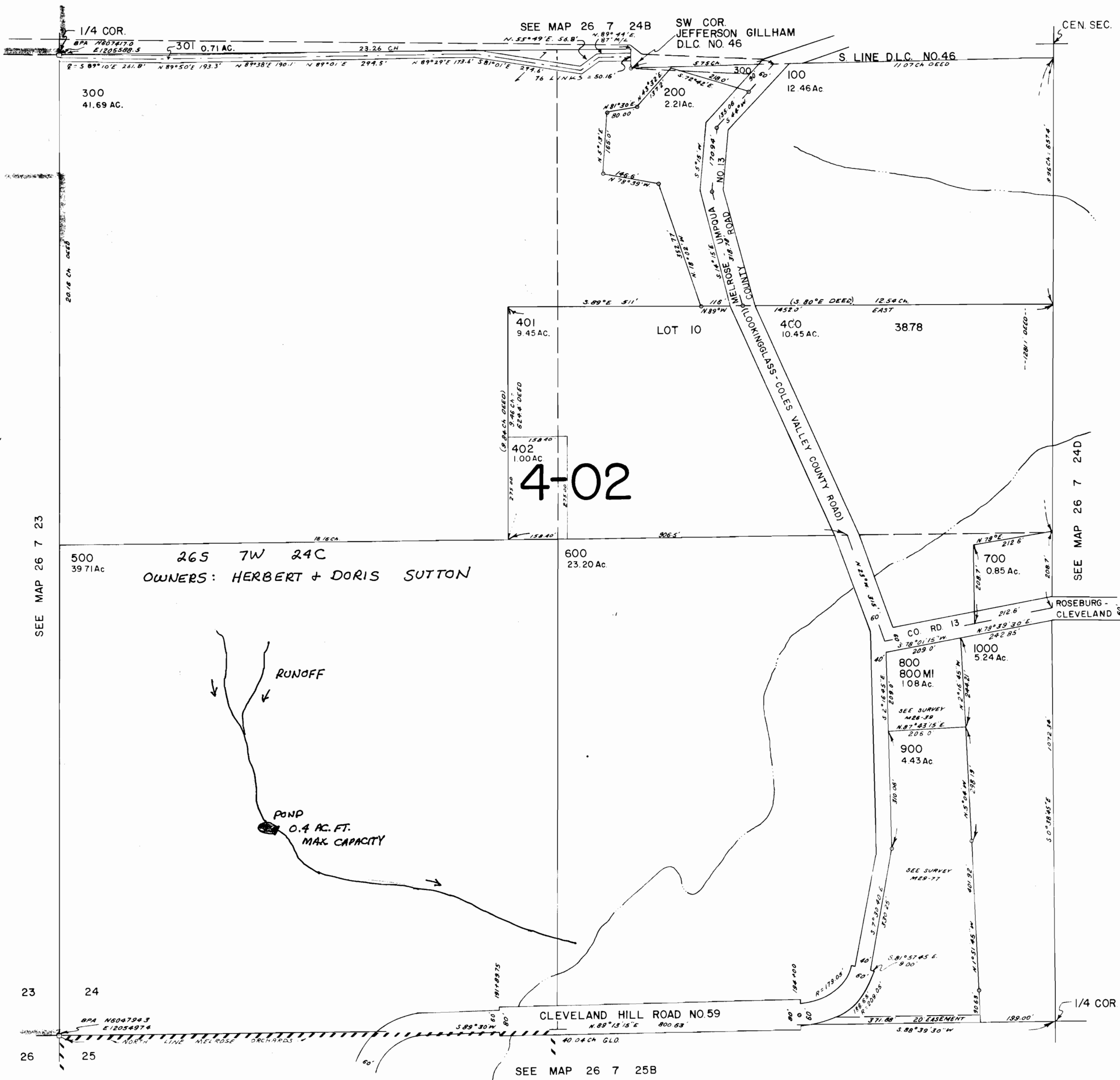
SW1/4 SEC. 24 T.26S. R. 7W. W.M.  
DOUGLAS COUNTY

REVISED ON  
4-6-93

26 7 24C

THIS MAP WAS PREPARED FOR  
ASSESSMENT PURPOSE ONLY.

1" = 200'



CERTIFICATE NO. 69260

Application No. R-74705  
Permit No.

26 7 24C

No Final Proof Map available

No Permit Map available