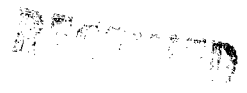


OUT 1 1994

ENTERPRISE QUADRANGLE
OREGON-WALLOWA CO.
15 MINUTE SERIES (TOPOGRAPHIC)

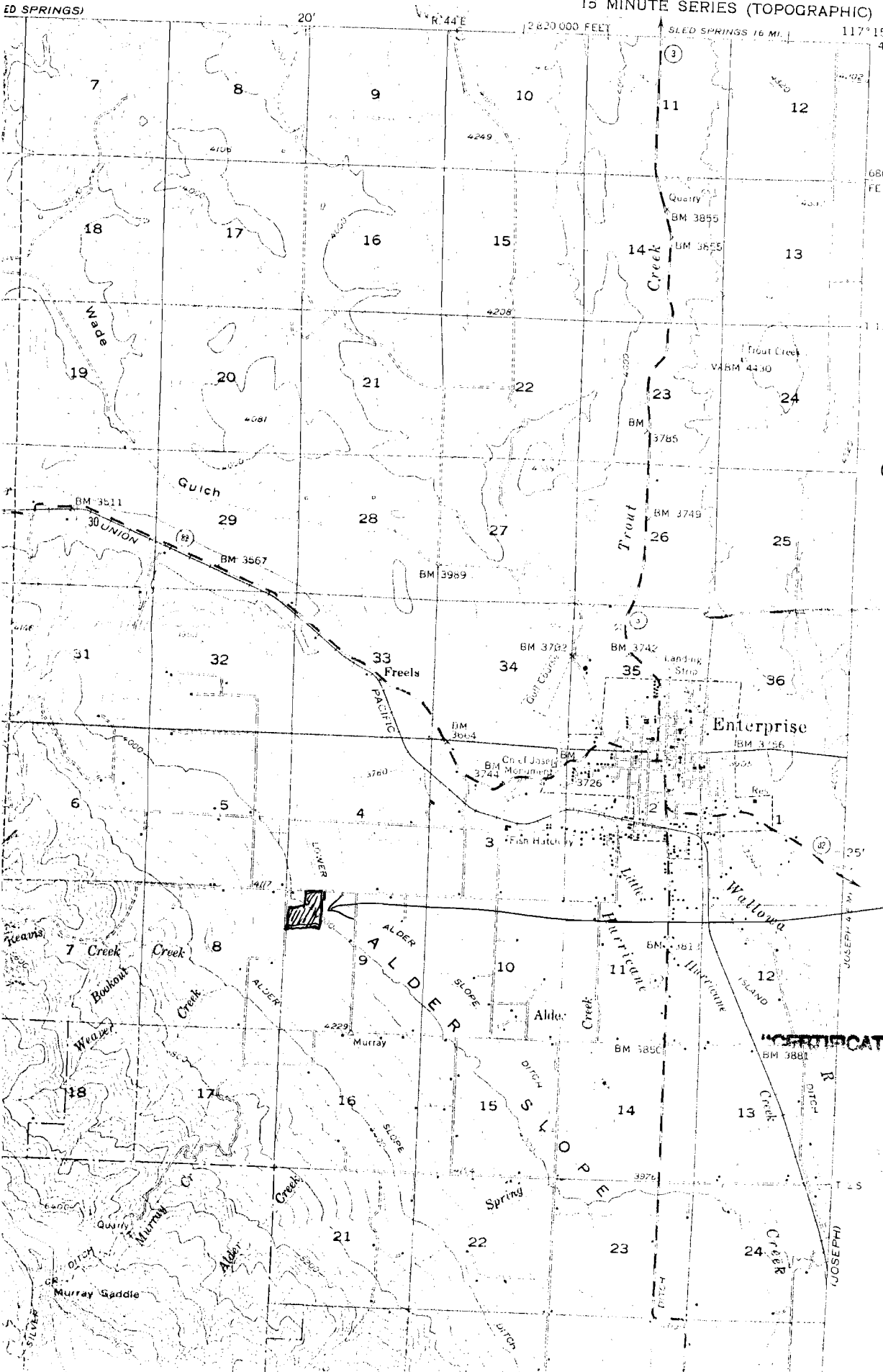
ELK MOUNTAIN

ED SPRINGS



SEP 1 1994

WATER RESOURCES DEPT.
SALEM, OREGON



NORTHWEST QUARTER
OF NORTHWEST
QUARTER OF SECTION
9, TOWNSHIP 2 SOUTH,
RANGE 44 EAST
WILLAMETTE MERIDIAN,
WALLOWA COUNTY,
OREGON

SEE
DETAIL
MAP

CERTIFICATE NO. 00064

R-74711

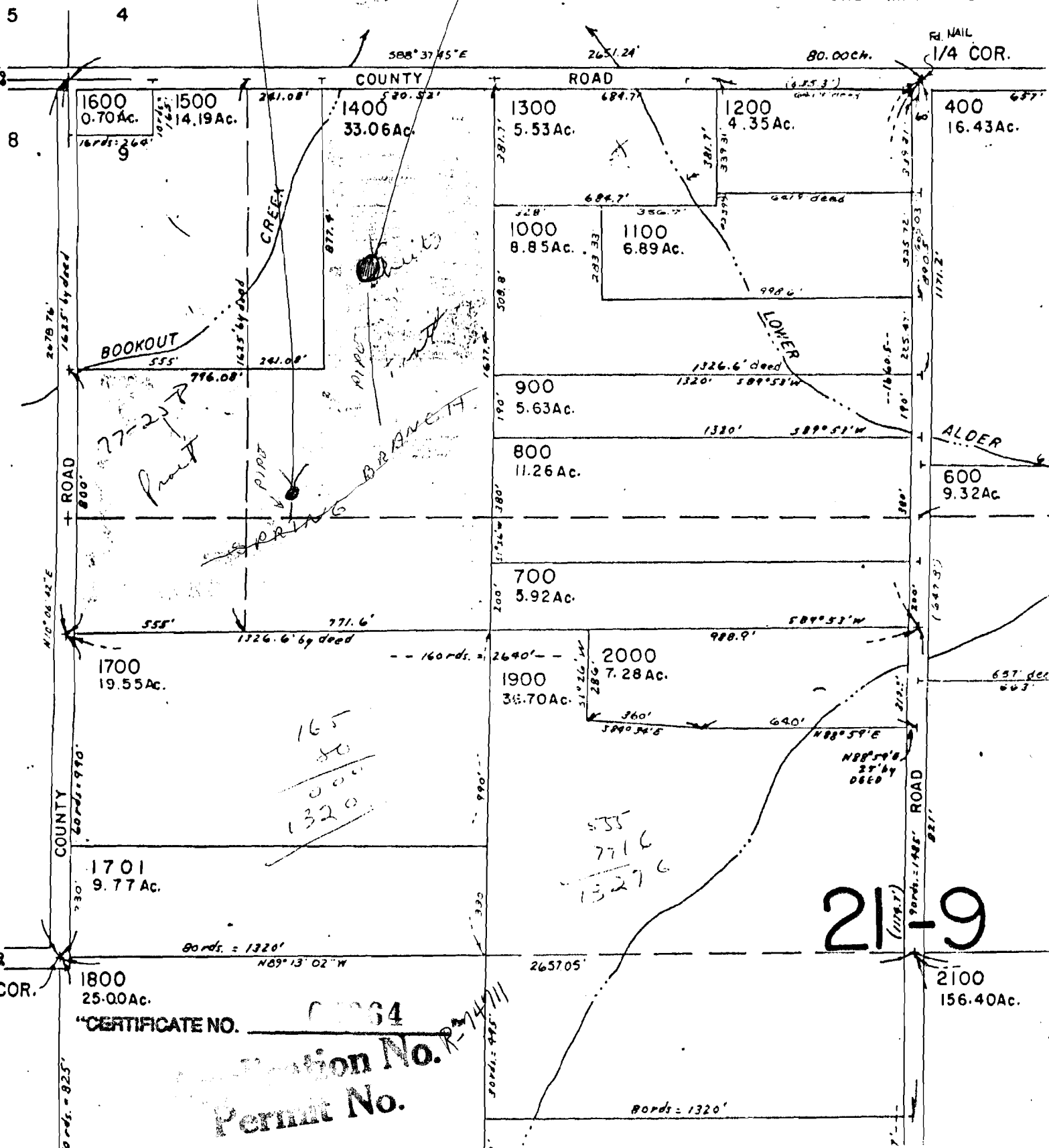
Section No.
Block No.

1" = 400'

1994

SEE MAP 2S 44

RI NAIL 1/4 COR.



21-9

CERTIFICATE NO. 0064
 Section No. R-74711
 Permit No.



C
20.7

B
2.1

C-22

C-21

C
36.1

5.4
8.9

C-603

C-668

C-673

Reavis
Pipe Line

D
30.6

A
19.6

C-69

C-667

C-674

C-669

A
7.6

E
1.5

C-670

B
3.7

173' 5"
pipeline to
gravity fault

C-67

C-671

Lawrence Cove

F
9.7

A
34.9

C-672

B
1.3

C
3.7

A
15.9

B
8.5

ion No.
Permit No.

R-74711

B
22.3

CERTIFICATE NO.

61

692604

C
3.7

D
8.5

C-71

C-68

E-24R
5

C
9.4

A
15.7

B
11.0