

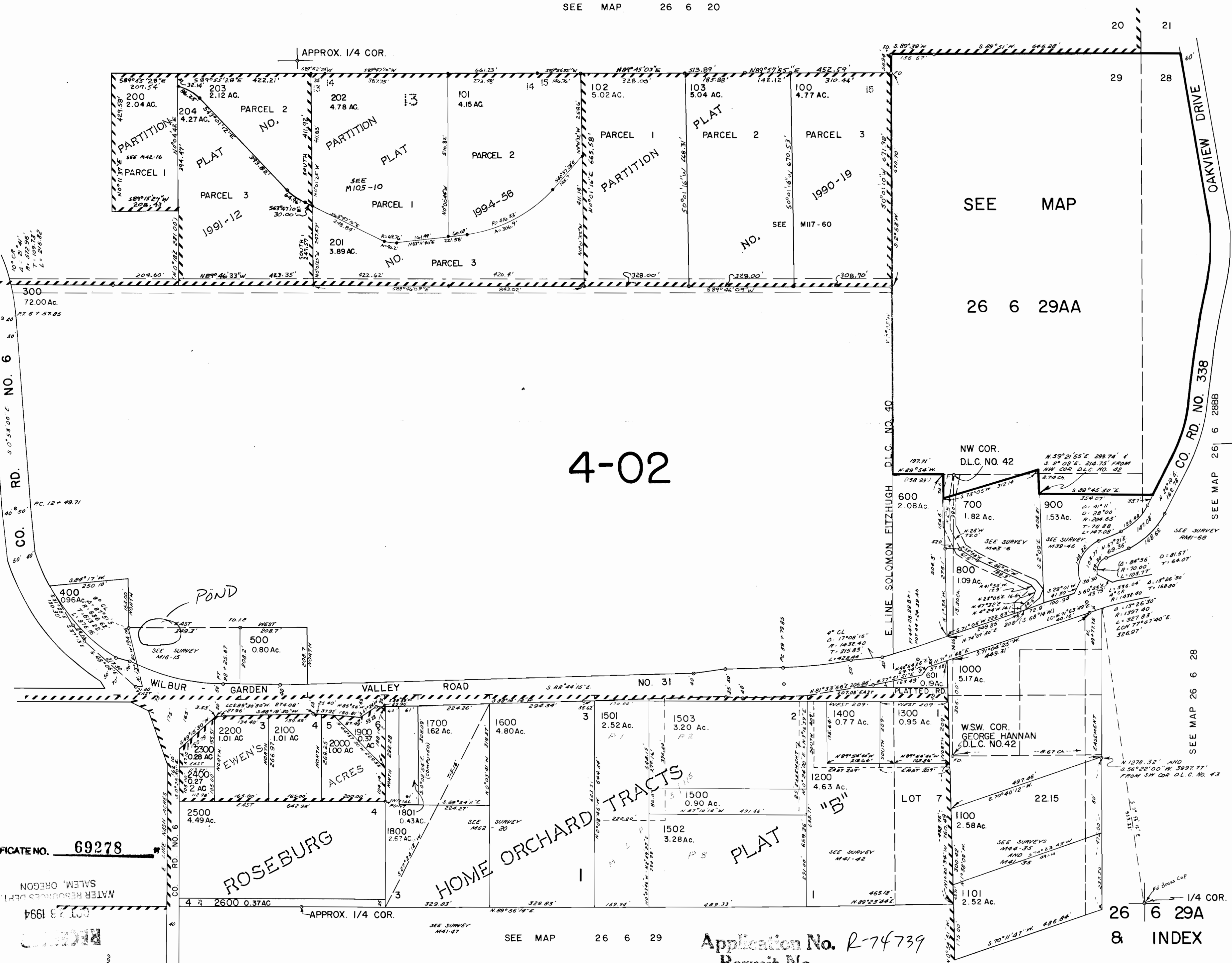
NE 1/4 SEC. 29 T.26S. R. 6 W. W.M.  
DOUGLAS COUNTY

1" = 200'

REVISED ON  
7-11-94

CANCELLED NO'S  
1301 104 205  
1401 206

SEE MAP 26 6 20



4-02

PLAT NO. 69278

WATER RESOURCES DEPT.  
SALEM, OREGON  
MAY 28 1994

SEE MAP 26 6 29

Application No. R-74739  
Permit No.

No Final Proof Map available

No Permit Map available