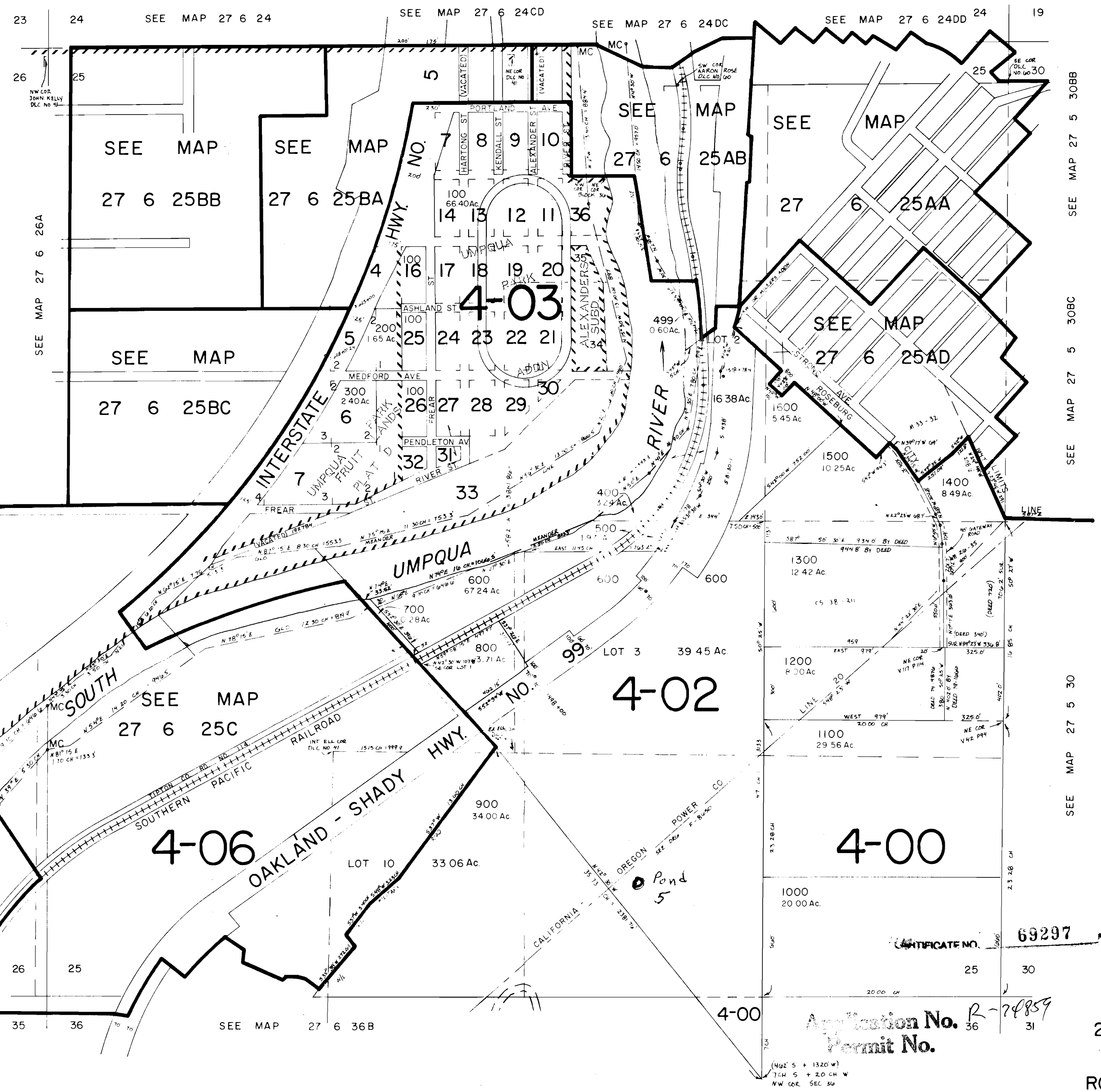


RECEIVED
NOV - 4 1994
WATER RESOURCES DEPT.
SALEM, OREGON

27 6 25
& INDEX
ROSEBURG

O'Mara Properties
2724 Old Hwy 99S
Roseburg, Oregon 97470

SECTION 25 T.27 S. R. 6 W. W.M.
DOUGLAS COUNTY
1" = 400'



SEE MAP 27 6 26D

SEE MAP 27 6 26A

SEE MAP 27 5 30BB
SEE MAP 27 5 30BC
SEE MAP 27 5 30

SEE MAP 27 5 30

OCT 27 1994
WATER RESOURCES DEPT.
SALEM, OREGON

CERTIFICATE NO. 69297
Application No. R-24859
Permit No. 36 31

27 6 25
& INDEX
ROSEBURG

SEE MAP 27 6 36

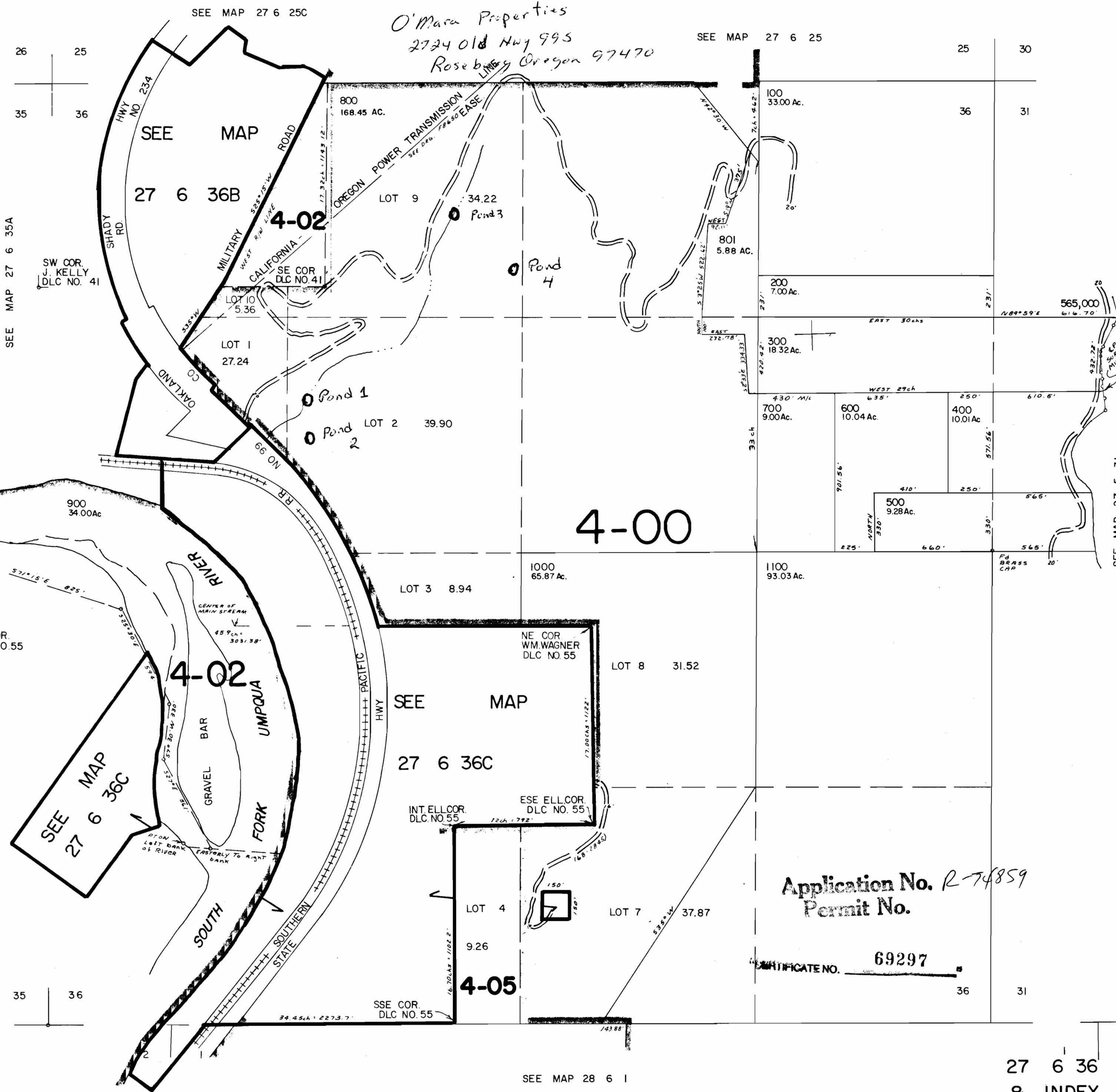
SECTION 36 T.27S. R.6W. W.M.
DOUGLAS COUNTY

REVISED ON
4-8-93

27 6 36
& INDEX

1" = 400'

O'Mara Properties
2724 Old Hwy 995
Roseburg Oregon 97470



Application No. R-74859
Permit No.

CERTIFICATE NO. 69297

OCT 25 1994
WATER RESOURCES DEPT.
SALEM, OREGON

27 6 36
& INDEX

No Final Proof Map available

No Permit Map available