

Mapped, edited, and published by the Geological Survey

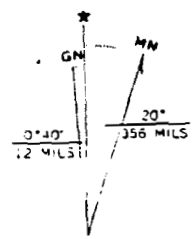
Control by USGS and USC&GS

Topography by photogrammetric methods from aerial photographs taken 1963 and planetable surveys 1965

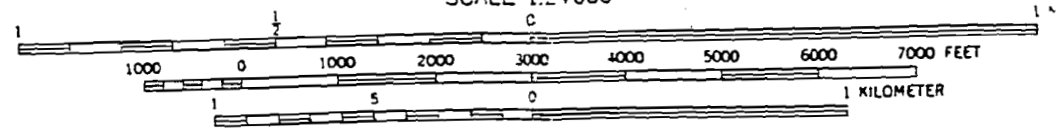
Polyconic projection. 1927 North American datum
10,000-foot grid based on Oregon coordinate system, north zone

1000-meter Universal Transverse Mercator grid ticks, zone 11, shown in blue

Fine red dashed lines indicate selected fence lines

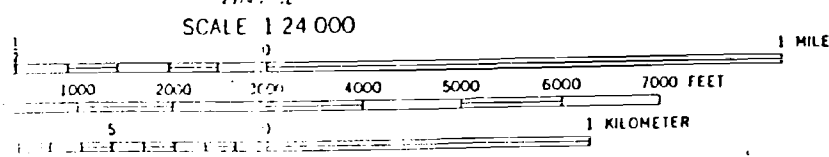
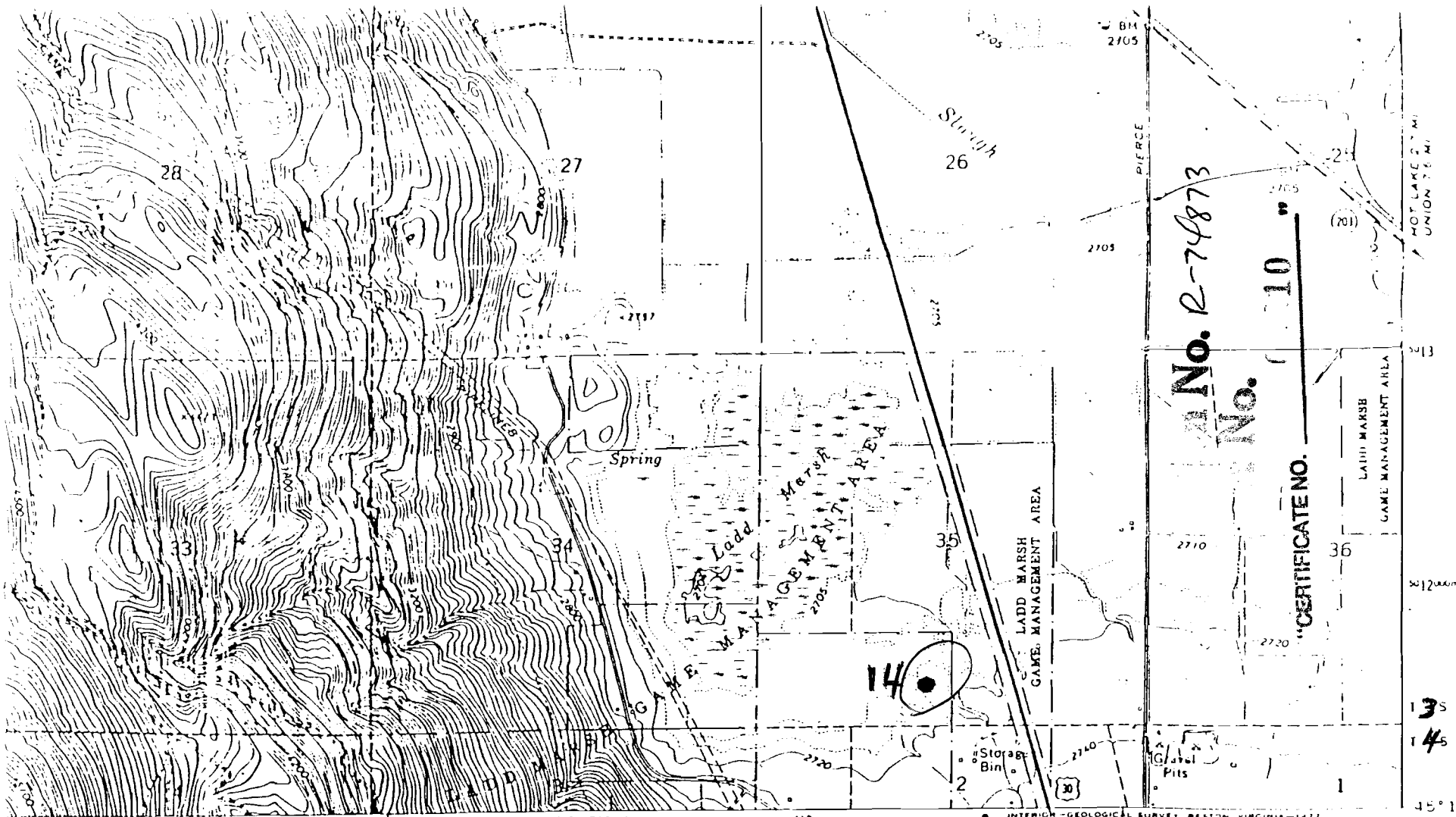


UTM GRID AND 1965 MAGNETIC NORTH DECLINATION AT CENTER OF SHEET

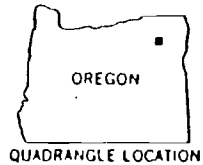


CONTOUR INTERVAL 5 FEET
DATUM IS MEAN SEA LEVEL

THIS MAP COMPLIES WITH NATIONAL MAP ACCURACY STANDARDS
FOR SALE BY U. S. GEOLOGICAL SURVEY, DENVER, COLORADO 80225, OR WASHINGTON, D. C. 20
A FOLDER DESCRIBING TOPOGRAPHIC MAPS AND SYMBOLS IS AVAILABLE ON REQUEST



CONTOUR INTERVAL 20 FEET
 DOTTED LINES REPRESENT 5 FOOT CONTOURS
 NATIONAL GEODETIC VERTICAL DATUM OF 1929



QUADRANGLE LOCATION

- ROAD CLASSIFICATION
- Heavy-duty ————— Light duty - - - - -
 - Medium-duty - - - - - Unimproved dirt - - - - -
 - Interstate Route ◻ U. S. Route ○ State Route

LA GRANDE SE, OREG.
 N4515 --- W11800/7 5

1963

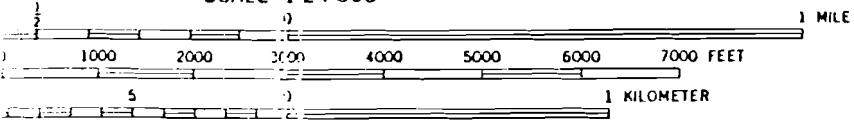
AMS 2374 1:50 511115 1102

MAP COMPLIES WITH NATIONAL MAP ACCURACY STANDARDS
 GEOLOGICAL SURVEY, DENVER, COLORADO 80225, OR RESTON, VIRGINIA 22092
 PRINTING TOPOGRAPHIC MAPS AND SYMBOLS IS AVAILABLE ON REQUEST



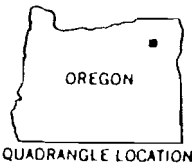
416 (GLASS HILL) 417 418 2'30" 419

SCALE 1:24 000



CONTOUR INTERVAL 20 FEET
 DOTTED LINES REPRESENT 5-FOOT CONTOURS
 NATIONAL GEODETIC VERTICAL DATUM OF 1929

R 39E



QUADRANGLE LOCATION

ROAD CLASSIFICATION

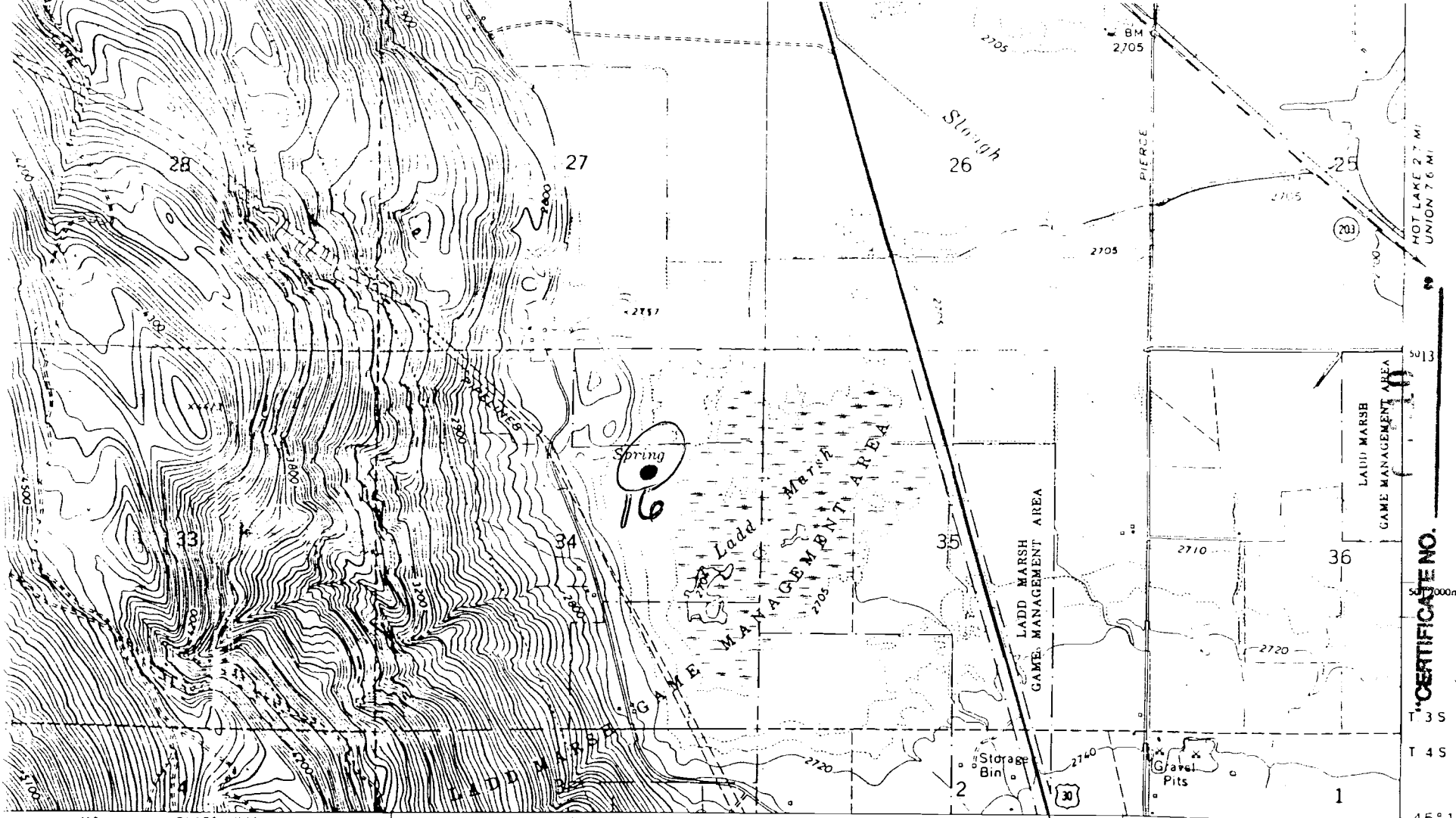
- Heavy-duty ——— Light duty ———
- Medium-duty - - - - - Unimproved dirt - - - - -
- Interstate Route ○ U S Route ○ State Route

LA GRANDE SE, OREG.
 N4515—W11800/7 5

1963

AMS 2374 1:24 000 SERIES V602

10. 2-74873



Certificate No. 074877
 1000000

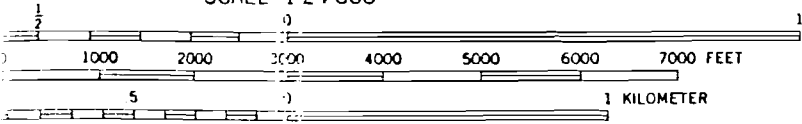
CERTIFICATE NO.

CH 2517

16 (GLASS HILL) 17 18 2'30" 19 45° 1
 2374 2375 2376 2377
 HAINES 23 MI BAKER 37 MI 118° 00'

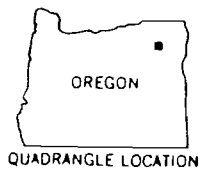
SCALE 1:24,000

R 38 E



ROAD CLASSIFICATION

- Heavy-duty ————— Light-duty - - - - -
- Medium-duty - - - - - Unimproved dirt = = = = =
- Interstate Route □ U. S. Route ○ State Route

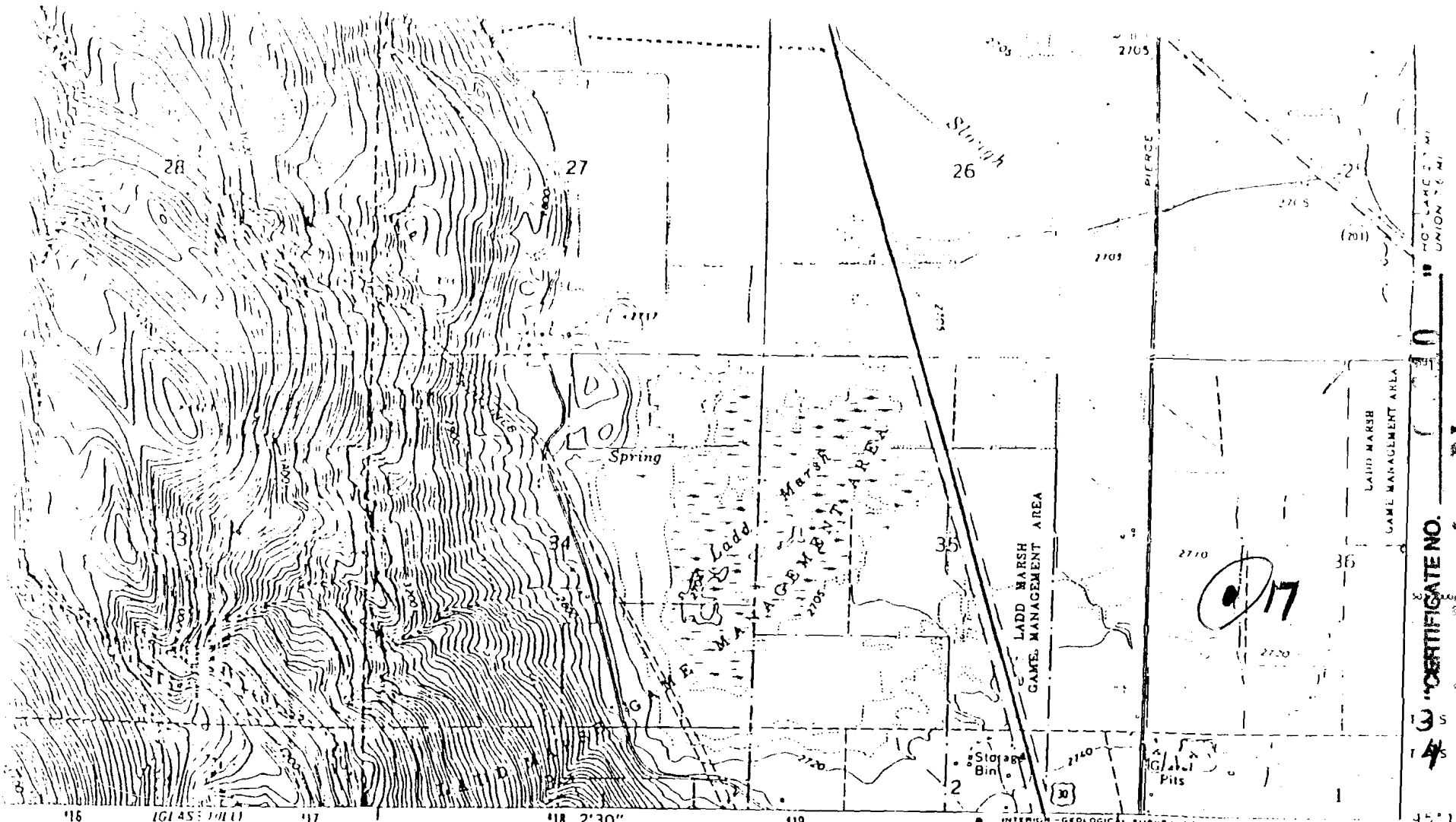


QUADRANGLE LOCATION

LA GRANDE SE, OREG.
 N4515—W11800/7.5

MAP COMPLIES WITH NATIONAL MAP ACCURACY STANDARDS
 GEOLOGICAL SURVEY, DENVER, COLORADO 80225, OR RESTON, VIRGINIA 22092
 DESCRIBING TOPOGRAPHIC MAPS AND SYMBOLS IS AVAILABLE ON REQUEST

1963



TO CLARK COUNTY UNION TOWNSHIP

10

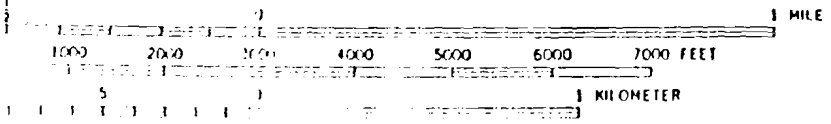
CERTIFICATE NO.

35
45

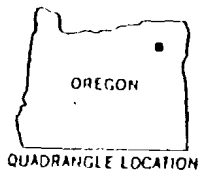
Section No. R-74873

16 17 18 19 20
GLASS HILL 214 215
SCALE 1:24,000
18 2'30" 19 21 22
45'1" 118'00"

R 38 E



CONTOUR INTERVAL 20 FEET
DOTTED LINES REPRESENT 5 FOOT CONTOURS
NATIONAL GEODETIC VERTICAL DATUM OF 1929



QUADRANGLE LOCATION

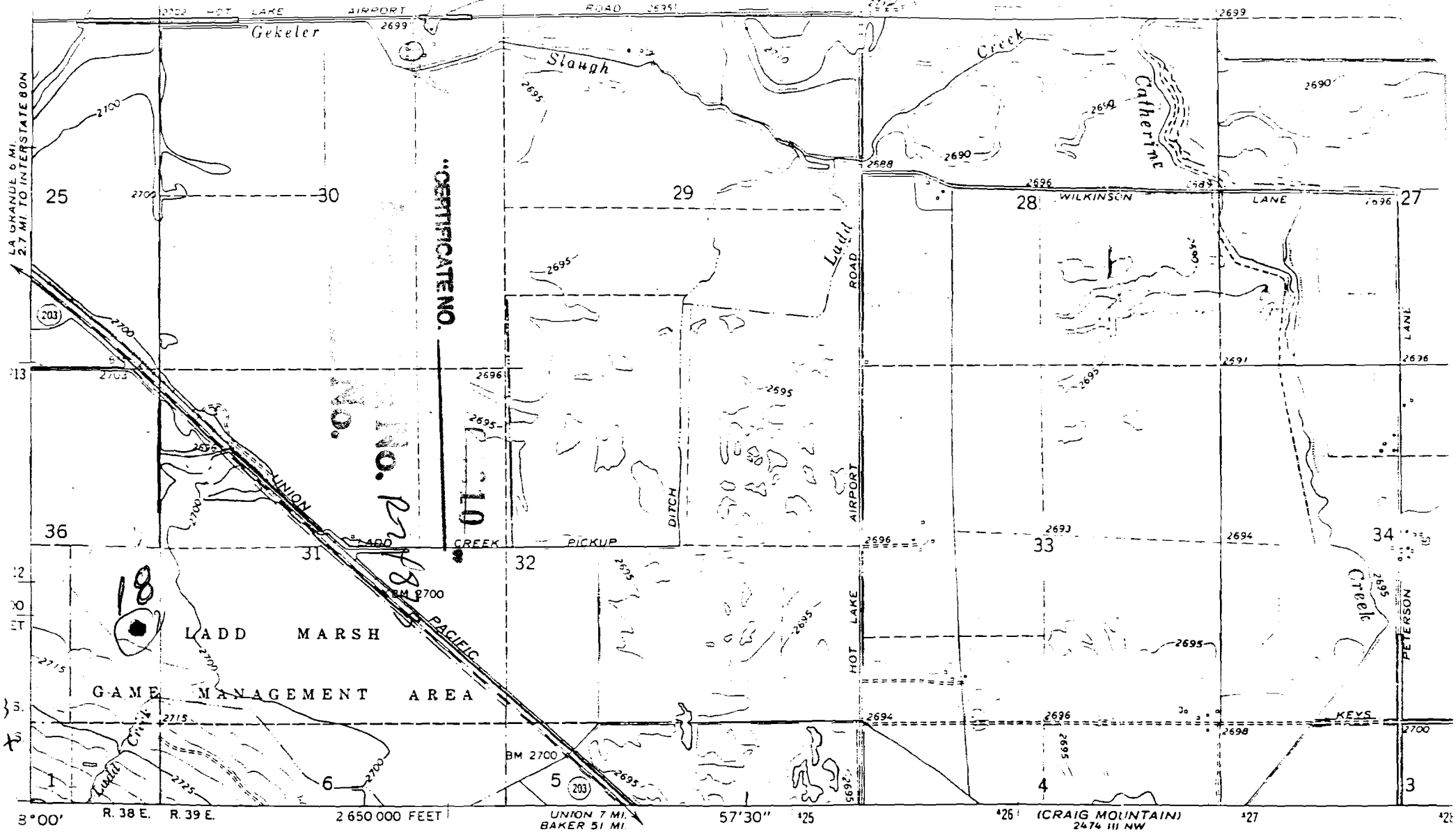
ROAD CLASSIFICATION
 Heavy-duty ——— Light-duty ———
 Medium-duty - - - - - Unimproved dirt ———
 () Interstate Route () U.S. Route () State Route

THIS MAP COMPLIES WITH NATIONAL MAP ACCURACY STANDARDS
 NATIONAL SURVEY, DENVER COLORADO 80225, OR RESTON, VIRGINIA 22092
 A LIST OF TOPOGRAPHIC MAPS AND SYMBOLS IS AVAILABLE ON REQUEST

LA GRANDE SE, OREG.
 N4515-W11800775

1963

AMS 2374 1-51 SERIES V002



Mapped, edited, and published by the Geological Survey

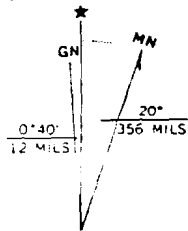
Control by USGS and USC&GS

Topography by photogrammetric methods from aerial photographs taken 1963 and planetable surveys 1965

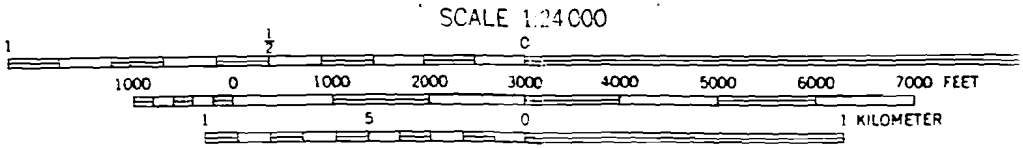
Polyconic projection. 1927 North American datum
10,000-foot grid based on Oregon coordinate system, north zone

1000-meter Universal Transverse Mercator grid ticks, zone 11, shown in blue

Fine red dashed lines indicate selected fence lines



UTM GRID AND 1965 MAGNETIC NORTH DECLINATION AT CENTER OF SHEET



CONTOUR INTERVAL 5 FEET
DATUM IS MEAN SEA LEVEL

THIS MAP COMPLIES WITH NATIONAL MAP ACCURACY STANDARDS
FOR SALE BY U. S. GEOLOGICAL SURVEY, DENVER, COLORADO 80225. OR WASHINGTON, D. C.

No Final Proof Map available

No Permit Map available