

NW1/4 SW1/4 SEC. 4 T.33S. R.6W. W.M.
DOUGLAS COUNTY

REVISED ON
9 - 21 - 94

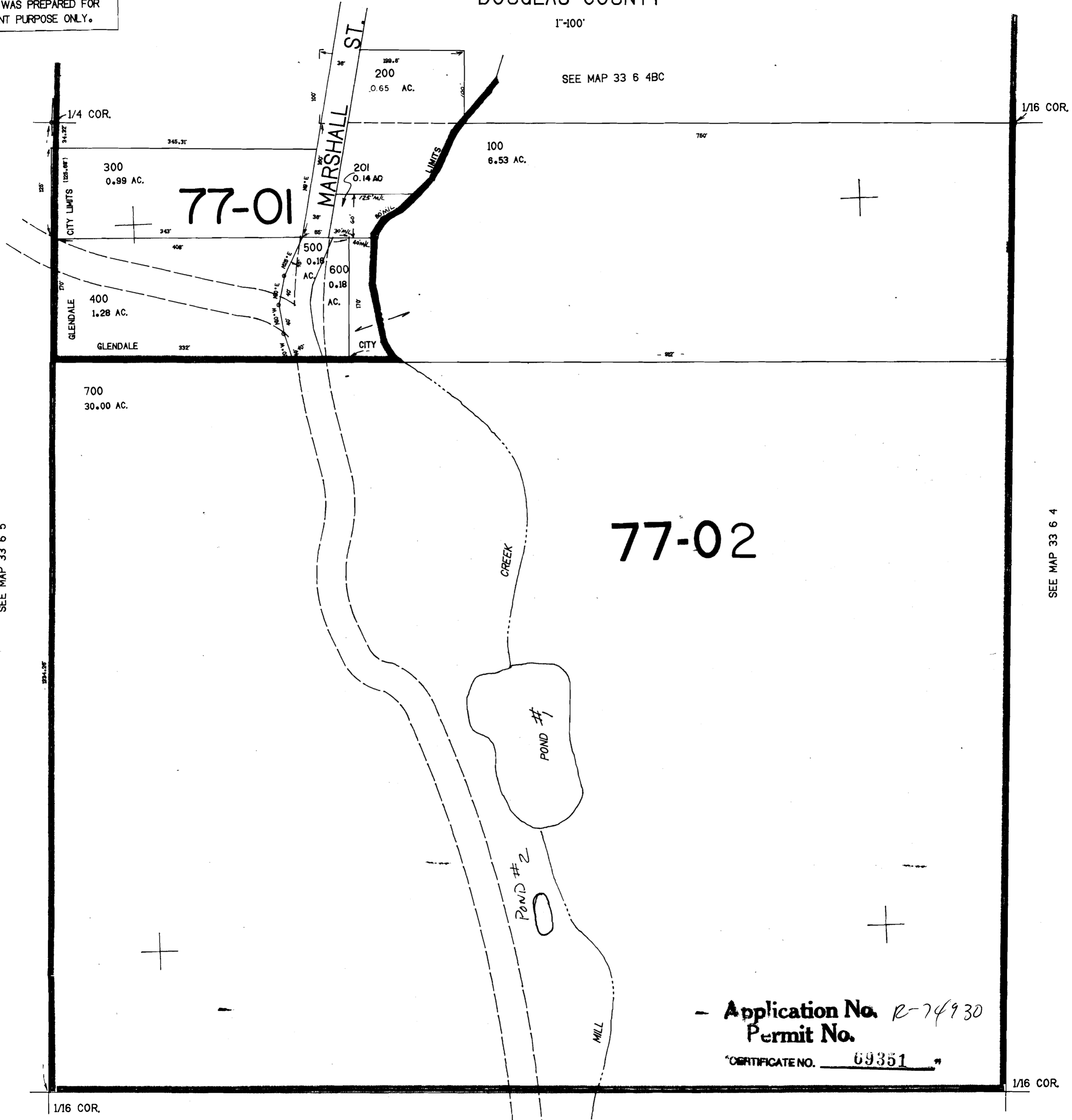
33 6 4CB
GLENDALE

THIS MAP WAS PREPARED FOR
ASSESSMENT PURPOSE ONLY.

1"=100'

SEE MAP 33 6 4BC

RECEIVED
NOV 17 1994
REGISTRATION DEPT
SEASIDE, OREGON



77-01

77-02

- Application No. R-74930
Permit No.

CERTIFICATE NO. 69351

SEE MAP 33 6 5

SEE MAP 33 6 4

SEE MAP 33 6 4

1,214,500

33 6 4CB
GLENDALE

No Final Proof Map available

No Permit Map available