

SECTION 33 T2N R2W W.M.

WASHINGTON COUNTY OREGON

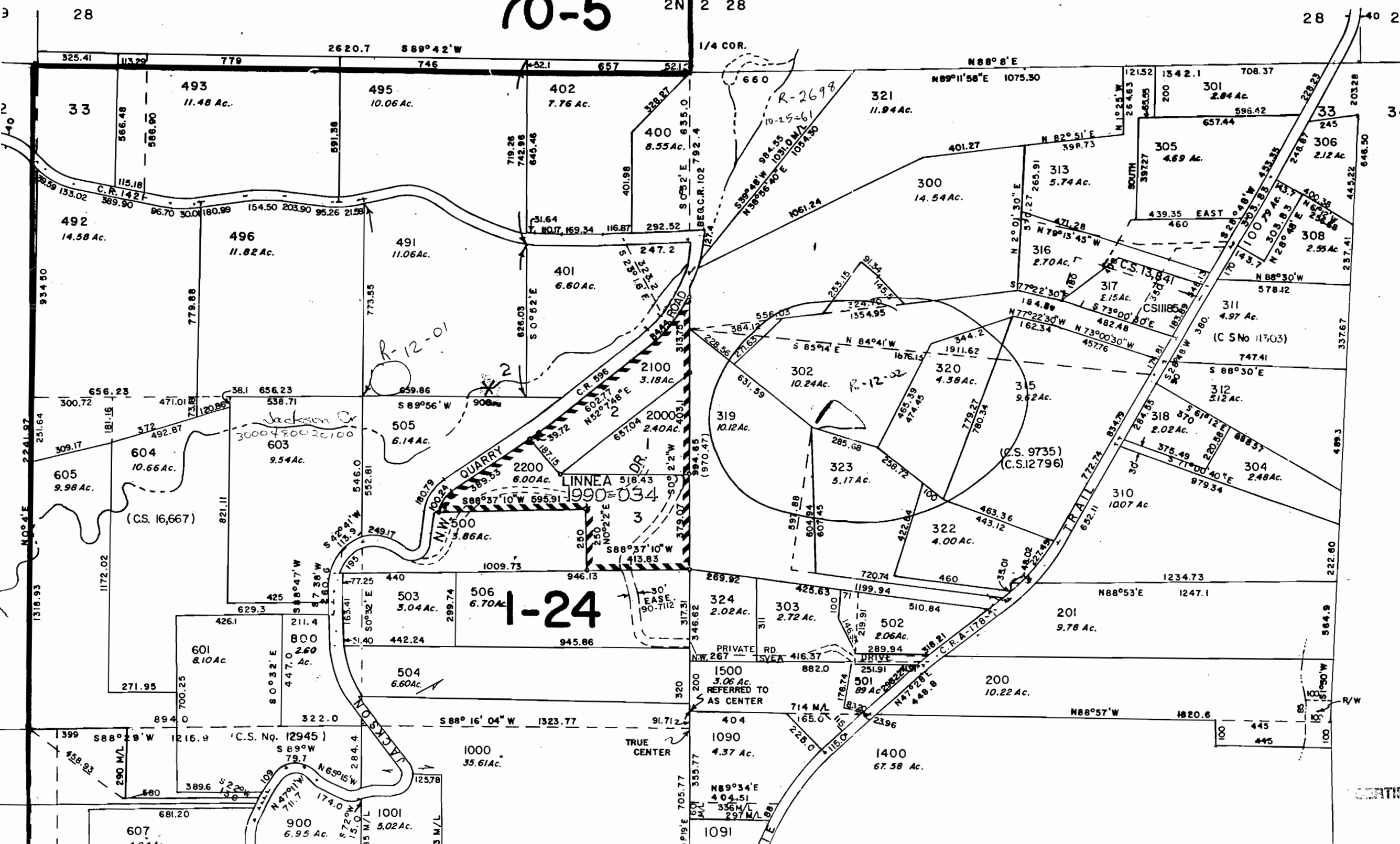
SCALE 1"=400'

2N 2 33

70-5

SEE MAP

2N 2 28



CANCELLED TAX LOTS
 309, 307, 602, 1401,
 700, 490, 314, 617, 618,
 494,

SEE MAP
 2N 2 34

CERTIFICATE NO. 69385
R75059

HILLSBORO QUADRANGLE
OREGON
7.5 MINUTE SERIES (TOPOGRAPHIC)

SW/4 HILLSBORO 15' QUADRANGLE
DIXIE MTN 6.2 MI

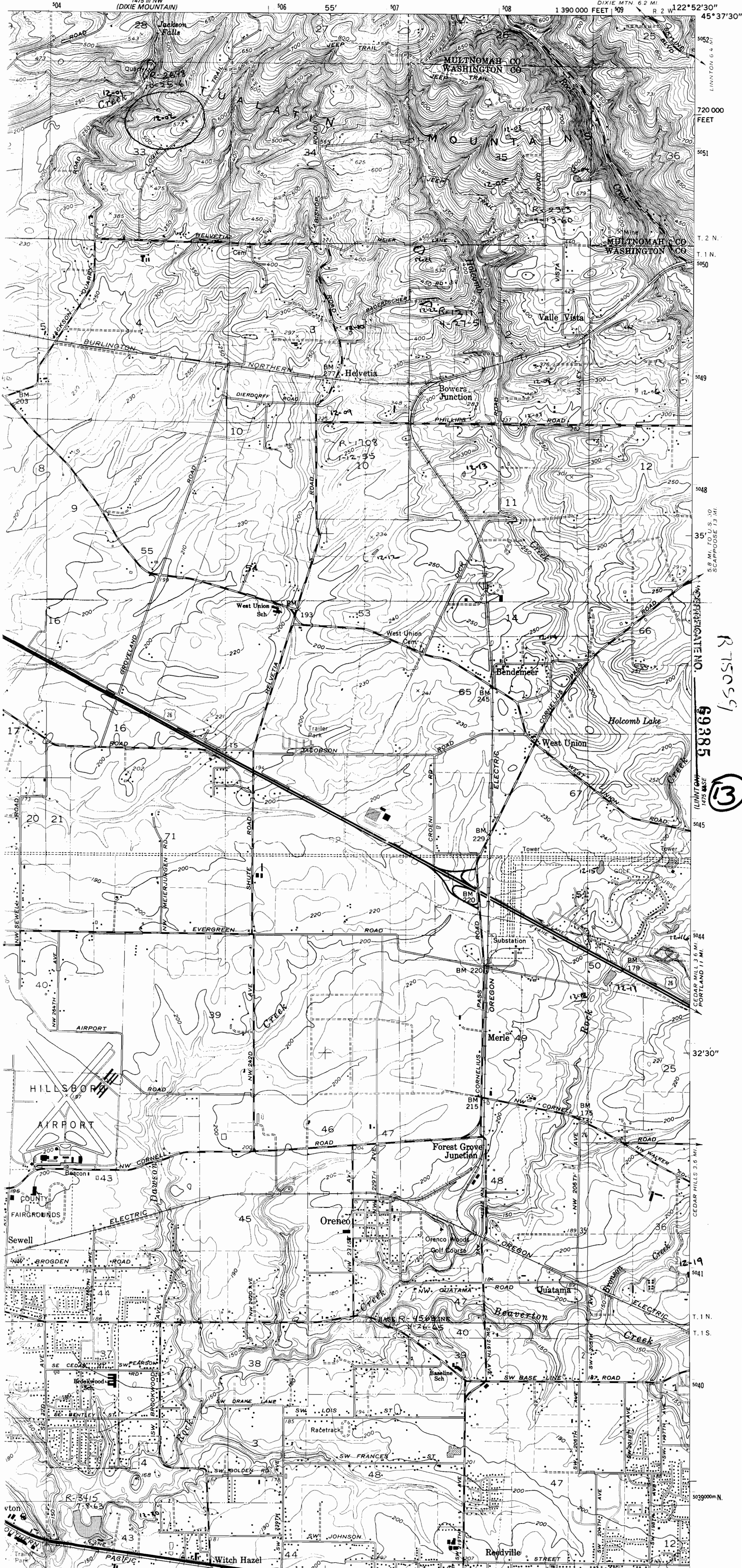
1 390 000 FEET 1 509

R 2 W 122°52'30"

1475 111 NE
15A UVE 51

7

1475 111 NW
(DIXIE MOUNTAIN)



R 75051

69385

13

5.8 MI. TO U.S. 30
SCAPPOOSE 1.3 MI.

5045

5044

5043

5042

5041

5040

5039

5038

5037

5036

5035

5034

SCALE 1:24 000

1 MILE
1 KILOMETER

CONTOUR INTERVAL 10 FEET
NATIONAL GEODETIC VERTICAL DATUM OF 1929



ROAD CLASSIFICATION
Heavy-duty ——— Light-duty ———
Medium-duty ——— Unimproved dirt - - - - -
U.S. Route ○ State Route ○

20

12

HILLSBORO, OREGON
SW/4 HILLSBORO 15' QUADRANGLE
N4530—W12252.5/7.5

THIS MAP COMPLIES WITH NATIONAL MAP ACCURACY STANDARDS
U. S. GEOLOGICAL SURVEY, DENVER, COLORADO 80225, OR RESTON, VIRGINIA 22092
OLDER DESCRIBING TOPOGRAPHIC MAPS AND SYMBOLS IS AVAILABLE ON REQUEST