

1N5W

LOT 2  
39.39 Ac.

LOT 3  
39.53 Ac.

LOT 4  
39.69 Ac.

2000

LOT  
39.65 Ac.

LOT 2  
39.41 Ac.

LOT 3  
39.19 Ac.

LOT 4  
38.95 Ac.

LOT 1  
38.96 Ac.

LOT 2  
39.22 Ac.

LOT 3  
39.46 Ac.

LOT 4  
39.72 Ac.

LOT 1  
39.86 Ac.

LOT 2  
39.90 Ac.

LOT 3  
39.94 Ac.

LOT 4  
39.98 Ac.

1900  
160.00

900

30' FASE  
951/953

110

300  
80.00

210

31  
16

2000

2000  
3954.24 Ac.

2100  
2090.00 Ac.

901  
240.00 Ac.  
901-M1  
901-M2

2000

2000

2000

2000

2900  
160.00 Ac.

"CERTIFICATE NO. 69387"

SEE MAP  
IS 5

# TOWNSHIP 15 R5W W.M.

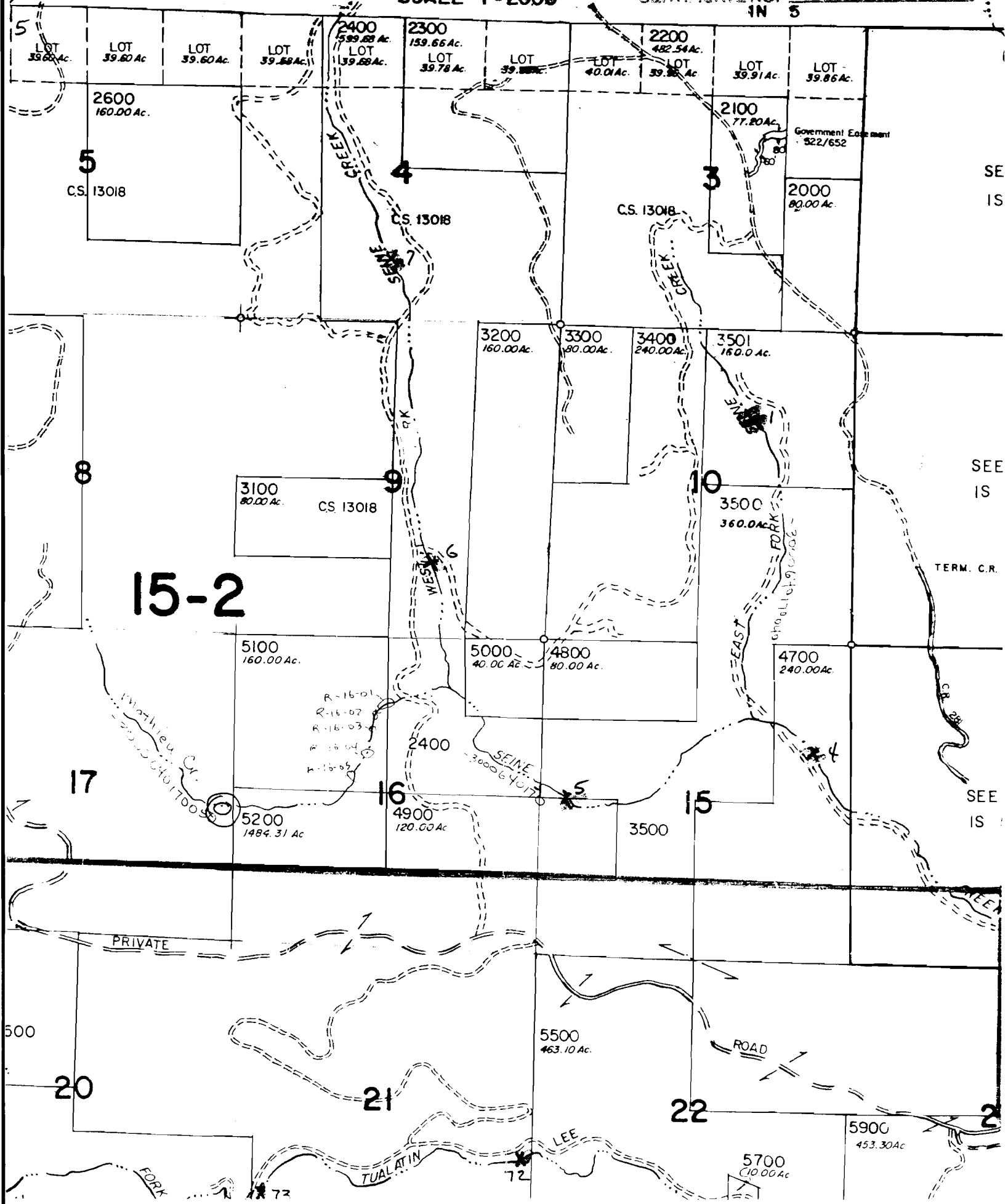
R75062

WASHINGTON COUNTY OREGON

69387

SCALE 1"=2000'

CERTIFICATE SEE MAP IN 5



15-2

5  
CS. 13018

4  
CS. 13018

3  
CS. 13018

Government Easement  
522/652

2000  
80.00 Ac.

8

3100  
80.00 Ac.  
CS. 13018

9

3200  
160.00 Ac.

3300  
80.00 Ac.

3400  
240.00 Ac.

3501  
160.0 Ac.

10

3500  
360.00 Ac.

TERM. C.R.

5100  
160.00 Ac.

5000  
40.00 Ac.

4800  
80.00 Ac.

4700  
240.00 Ac.

17

R-16-01  
R-16-02  
R-16-03  
R-16-04  
R-16-05

2400

SEINE  
3000 640 FT

4900  
120.00 Ac.

5

15

3500

SEE IS

PRIVATE

500

20

21

22

5500  
463.10 Ac.

ROAD

FORK

TUALATIN

LEE

5700  
100.00 Ac.

5900  
453.30 Ac.

72

SEE IS

SEE IS

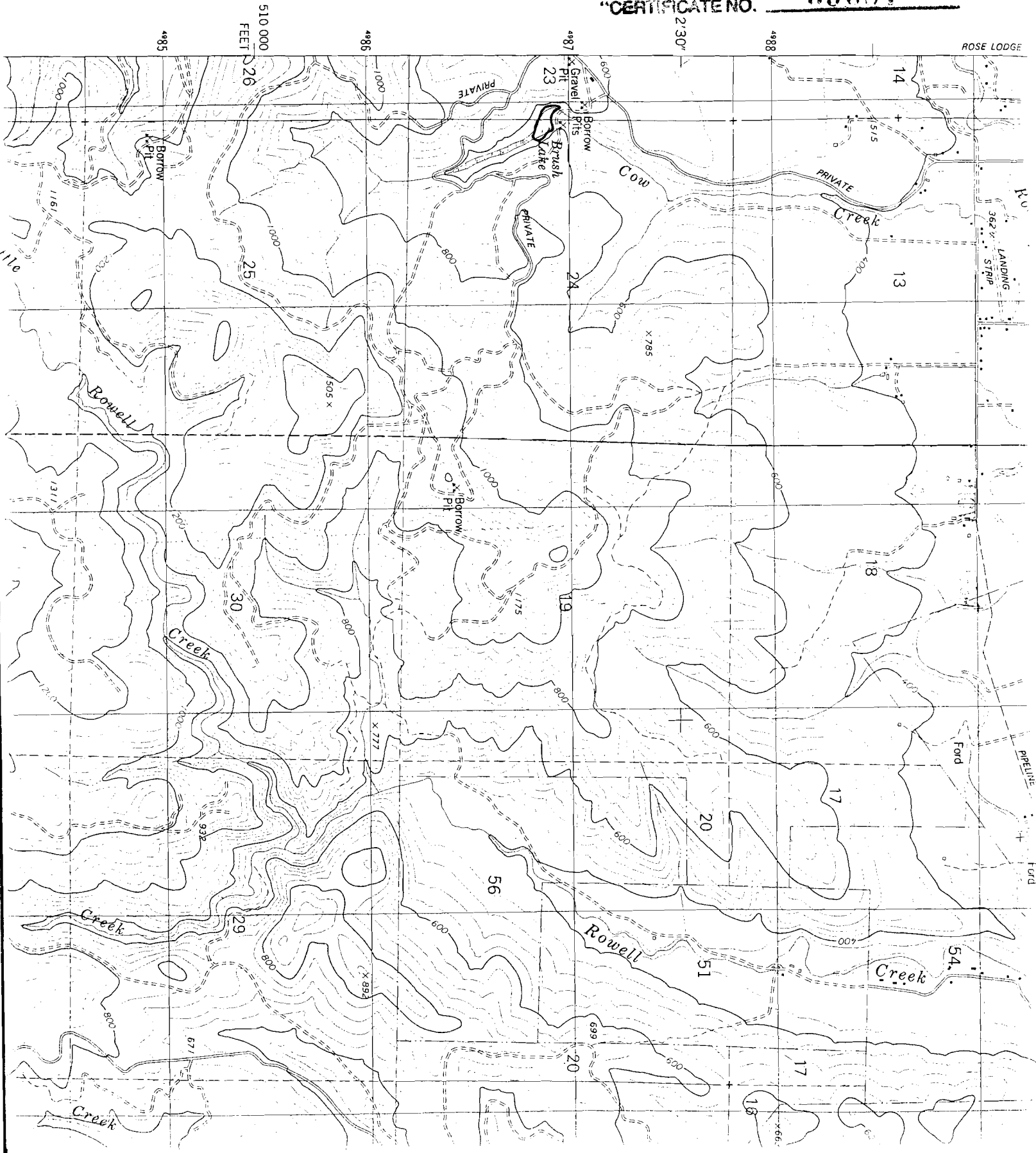
TERM. C.R.

SEE IS

SEE IS

R75062

"CERTIFICATE NO. 69387"



Roaring Creek Quad 1914

69387

CERTIFICATE NO.

DEC 21 1994

WATER 16

Borrow Pit

Borrow Pit



Stroggins

Hollow

9-03

9-04

9-05

9-06

9-08

9-09

9-10

9-11

9-12

9-13

9-14

R 6 W  
R 5 W

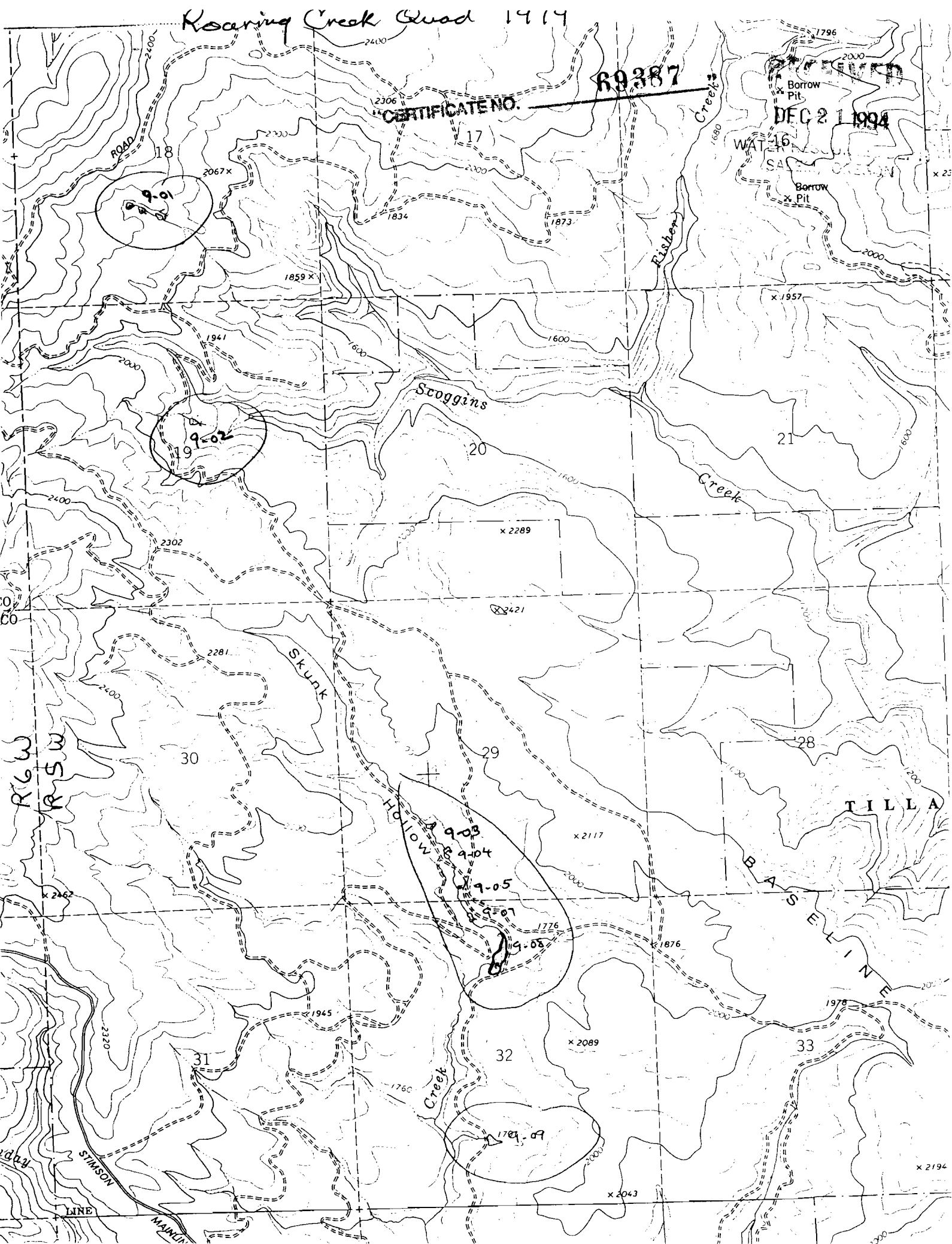
TILLA

BASELINE

LINE

STINSON

MANLIN



"CERTIFICATE NO. 69387"

9

DEC 21 1994

1720000E R5W

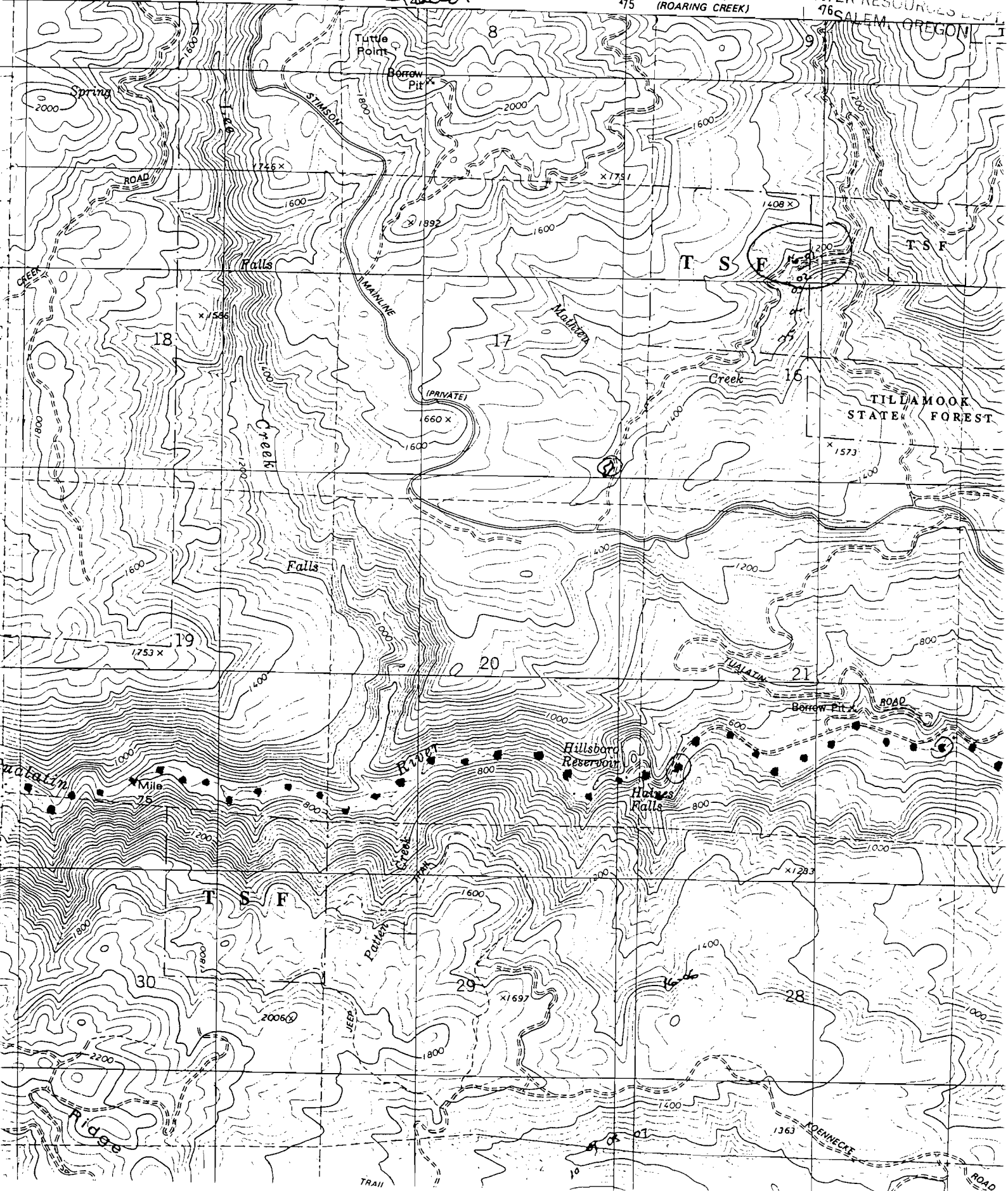
473

Turner Road

475

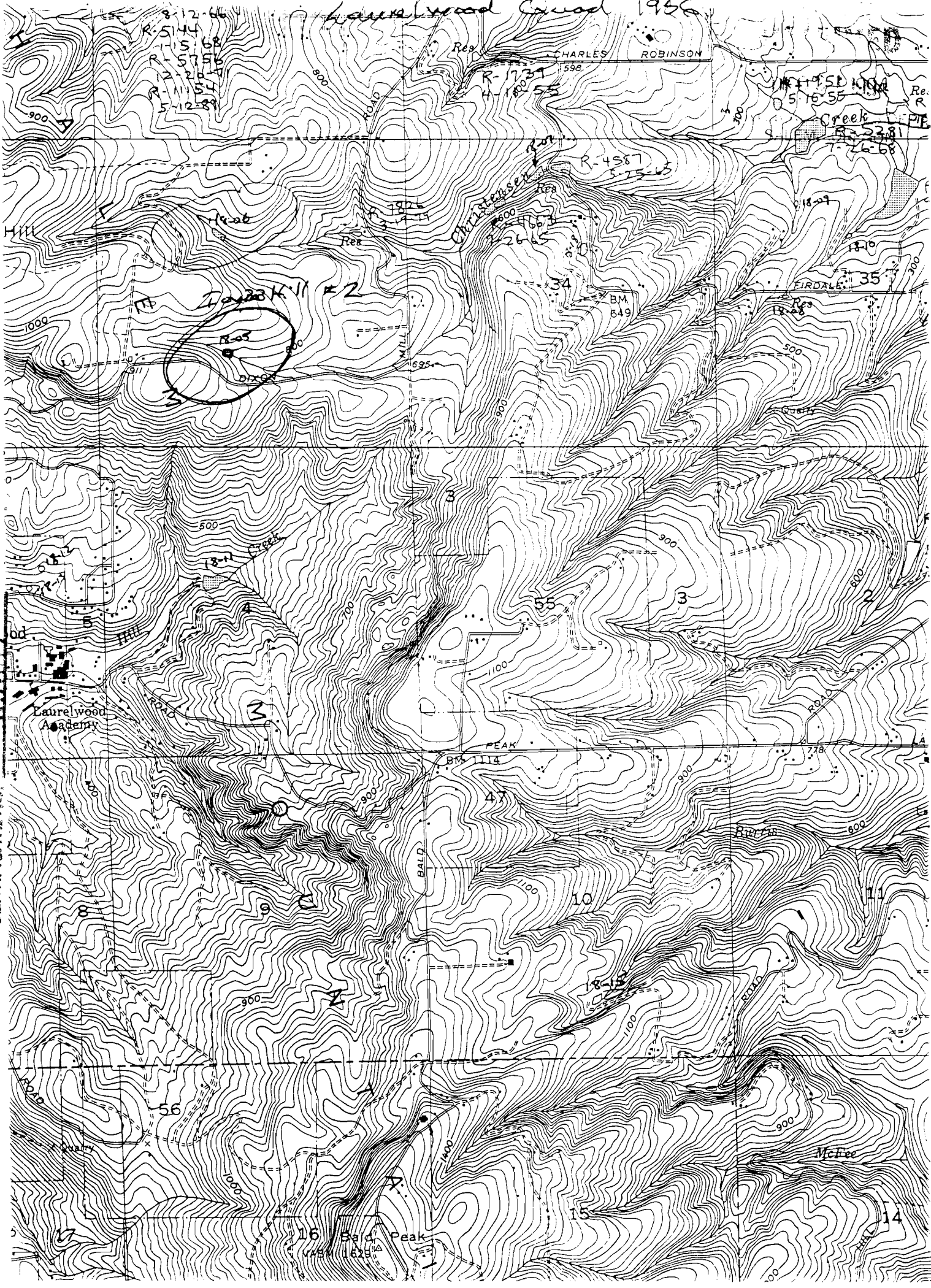
1375 III SE  
(ROARING CREEK)

WATER RESOURCES DEPT.  
76 SALEM, OREGON



Laurelwood Canyon 1956

69387  
"COMM. DATE NO."



CHARLES ROBINSON

R-18-13  
5-16-55  
R-2381  
7-26-58

R-4587  
5-25-65

R-05  
2000K/11 #2

Laurelwood Academy

BALD PEAK

McLee

Bald Peak