

POLK COUNTY

SCALE 1"=400'

8530

FILE NO.
10000
11000
12000
13000
14000

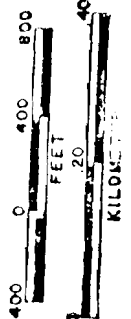
69404 R75141

RECEIVED

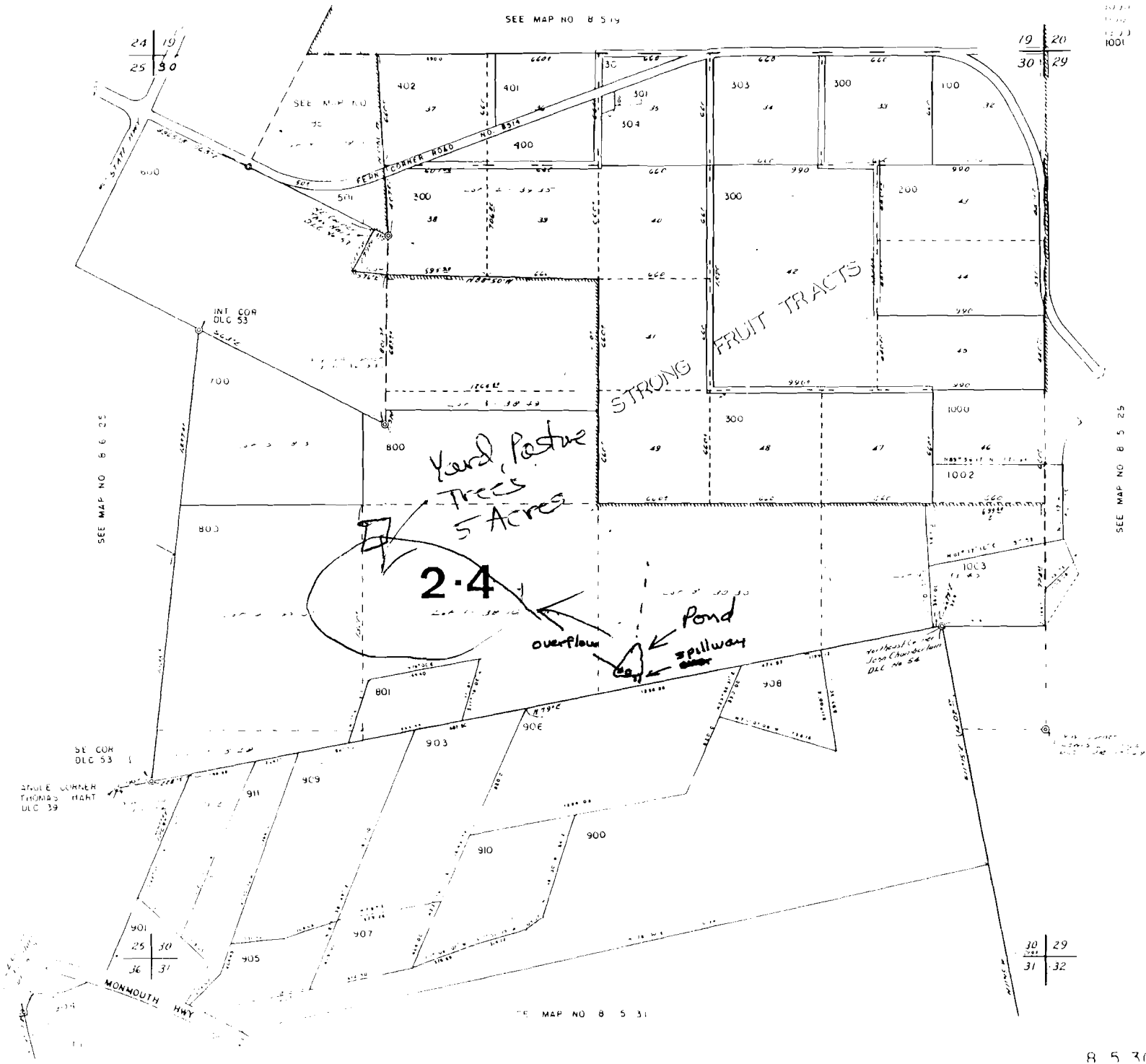
JAN 2 1996

WATER RESOURCES DIVISION
SALEM, OREGON

SCALE 1:9600



2



SEE MAP NO. B 5 25

SEE MAP NO. B 5 31

8530