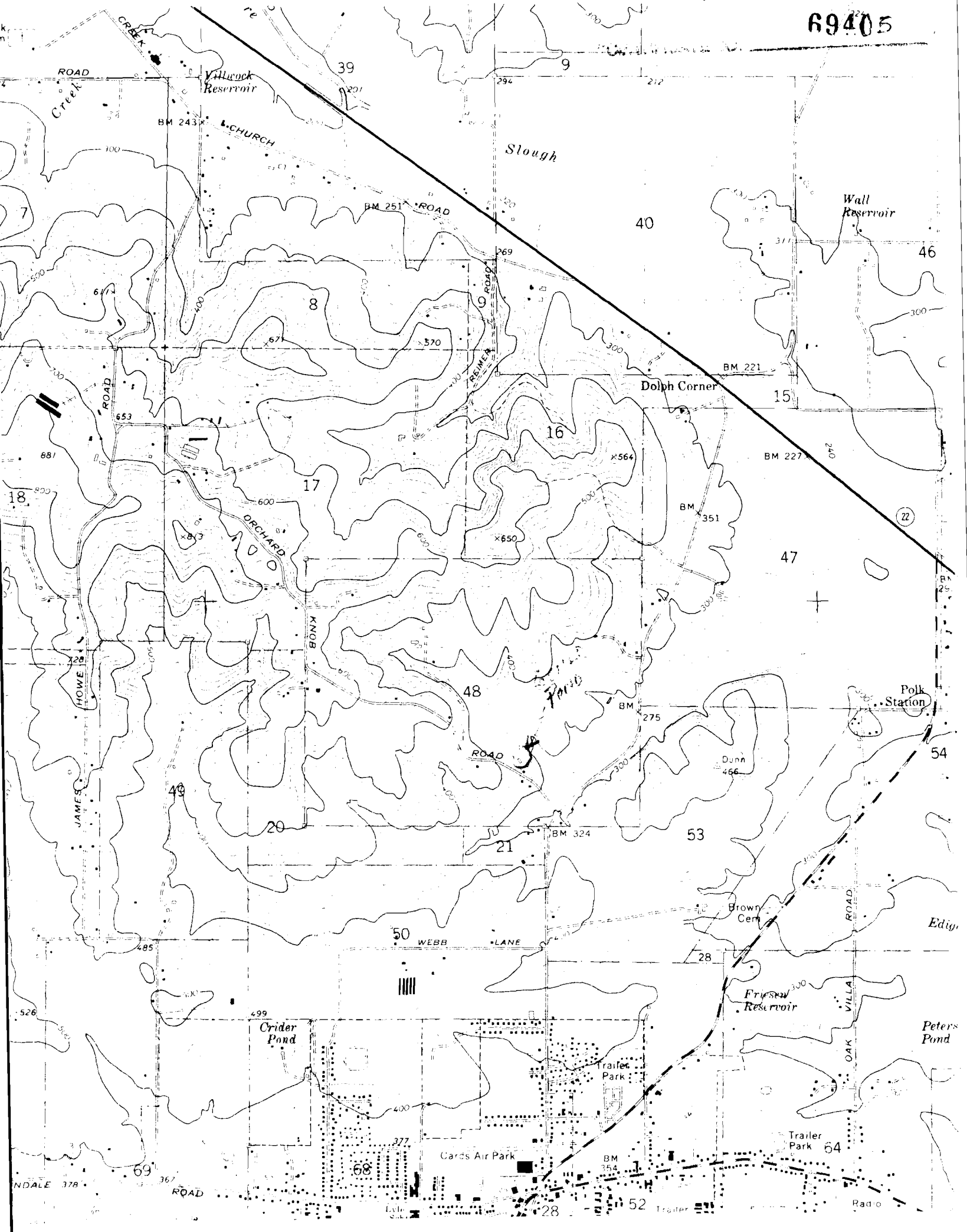
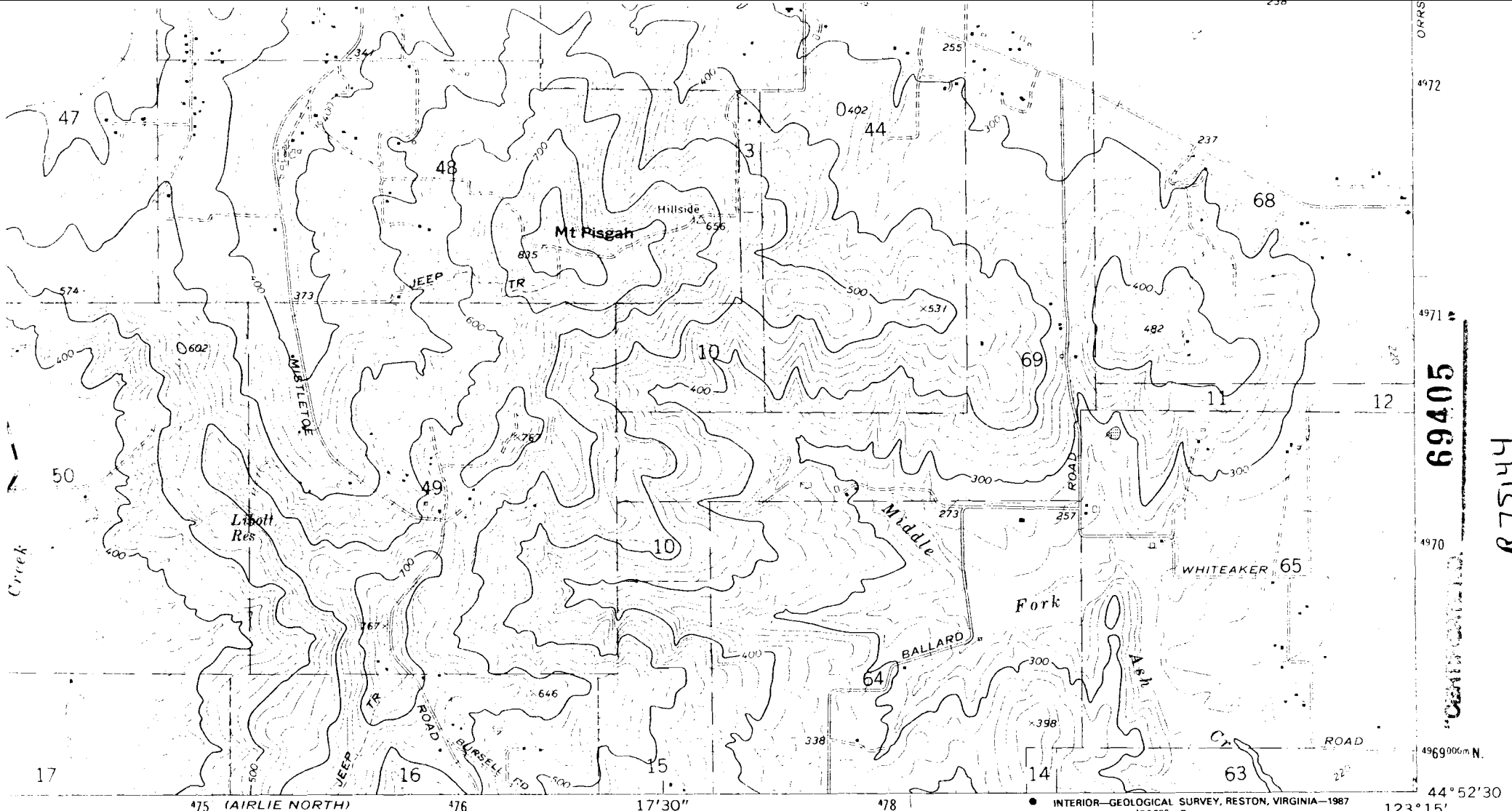


R75144

69405





69405
 R75144
 4972
 4971
 4970
 4969006m N
 44° 52' 30"
 123° 15'

475 (AIRLIE NORTH)
1373 IV SE

SCALE 1:24 000

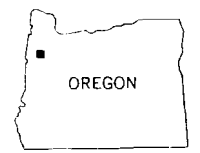


CONTOUR INTERVAL 20 FEET
 DOTTED LINES REPRESENT 10-FOOT CONTOURS
 NATIONAL GEODETIC VERTICAL DATUM OF 1929

RECEIVED

JAN 24 1986

WATER...
 SALEM, OREGON



QUADRANGLE LOCATION

- ROAD CLASSIFICATION**
- Primary highway, hard surface
 - Secondary highway, hard surface
 - Light-duty road, hard or improved surface
 - Unimproved road
 - Interstate Route
 - U. S. Route
 - State Route

THIS MAP COMPLIES WITH NATIONAL MAP ACCURACY STANDARDS
 BY U. S. GEOLOGICAL SURVEY, DENVER, COLORADO 80225, OR RESTON, VIRGINIA 22092
 FOLDER DESCRIBING TOPOGRAPHIC MAPS AND SYMBOLS IS AVAILABLE ON REQUEST

Revisions shown in purple compiled from aerial photographs taken 1982 and other sources
 This information not field checked. Map edited 1986

DALLAS, OREG.
 NE 1/4 DALLAS 15' QUADRANGLE
 44123-H3-TF-024

1974
 PHOTOREVISED 1986
 DMA 1373 IV NE-SERIES V892