

20 21

T327

NH

1/13.4

T328

1/6.2 PC NH

PC

NH

PC

PC

T284

T10608

NH

1/11.6

NH

NW

NH

T722

PC

PC GIBSON

NH NW

1/36.2

Pond NW 1
Pond NW 2

T26

PC

NH NW

T339-
OTM '93
#6

20 21

29 28

1/37.6

1/47.1

E3

NH NW

T51

T330

PC

1/62.5

SECTION 21 T5S. R1E.W.M.

5 1E 21

CLACKAMAS COUNTY

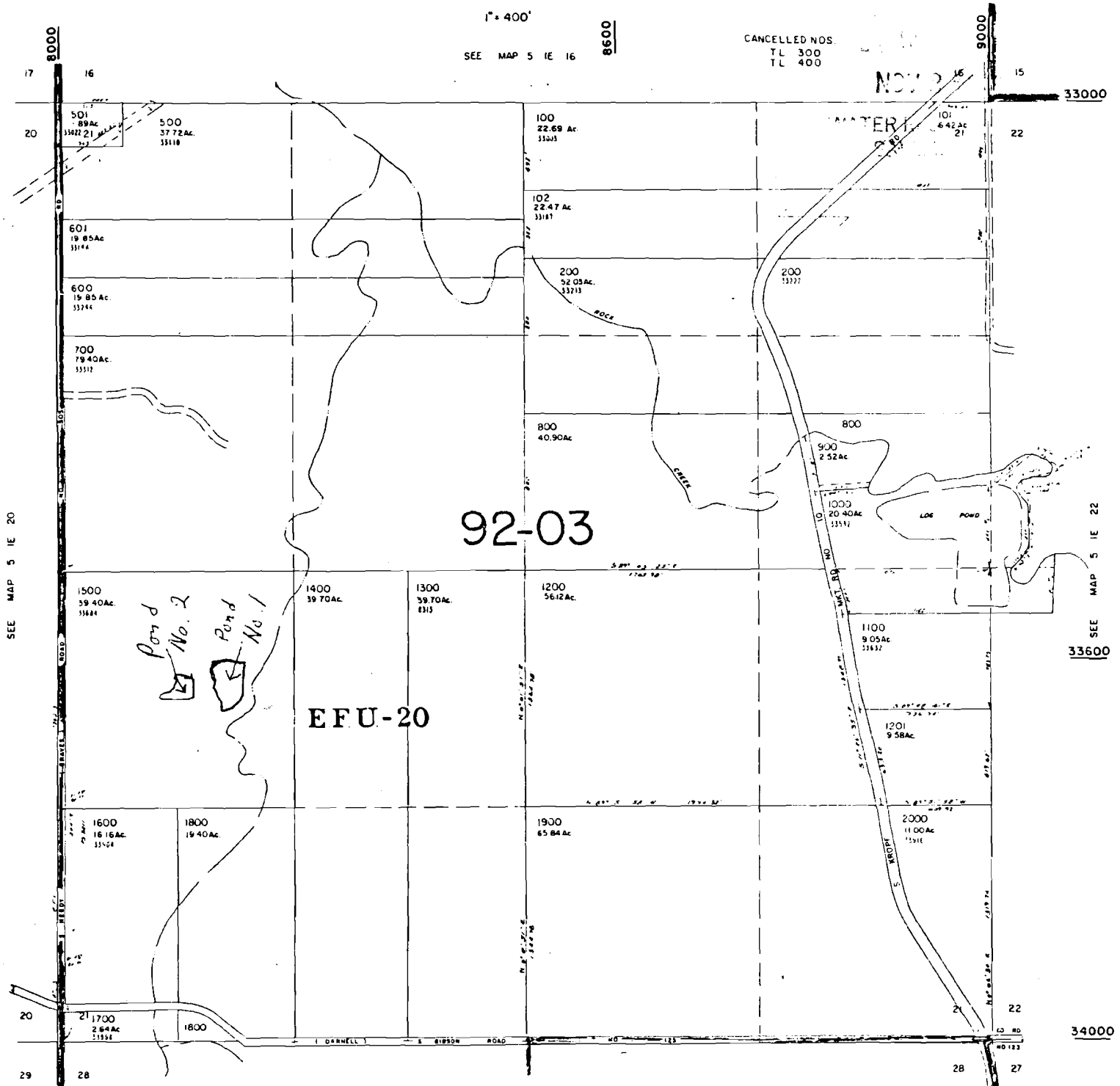
1" = 400'

8600

SEE MAP 5 1E 16

CANCELLED NOS.
TL 300
TL 400

SCALE 1:9600



SEE MAP 5 1E 20

SEE MAP 5 1E 22

92-03

EFU-20

Pond No. 2
Pond No. 1

RECEIVED
DEC 29 1992
DEPT. OF REVENUE STATE OF OREGON
ASSESSMENT & APPEALS DIV.

CERTIFICATE NO.

69408

RT5209