

RECEIVED

DEC - 5 1994

WA. SALEM, OREGON

THIS MAP WAS PREPARED FOR ASSESSMENT PURPOSE ONLY.

SECTION 16 T.25S. R.4 W. W.M. DOUGLAS COUNTY

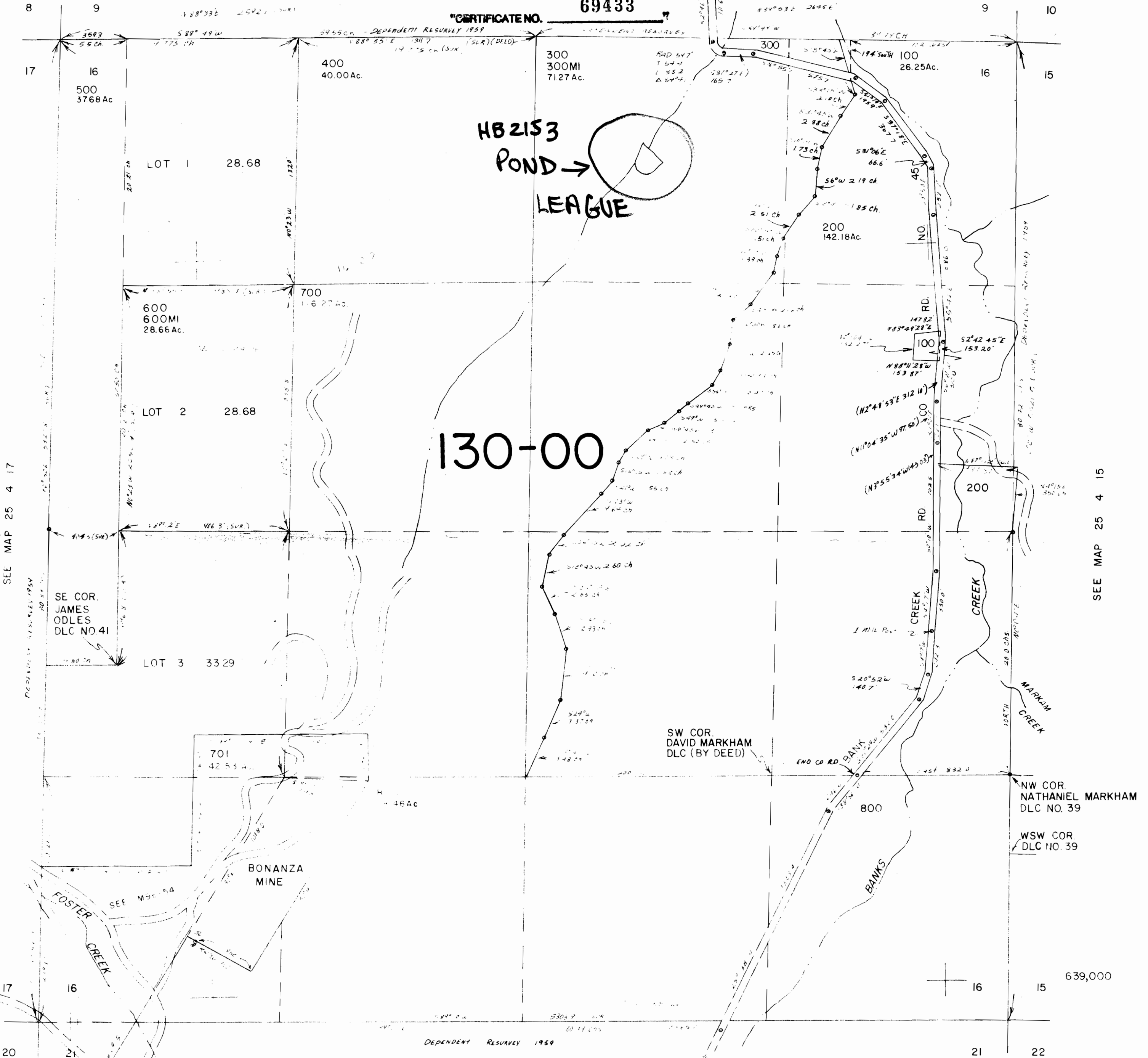
25 4 16

SEE MAP 25 4 9C

1" = 400'

CERTIFICATE NO. 69433

SEE MAP 25 4 9D



SEE MAP 25 4 17

SEE MAP 25 4 15

130-00

639,000

SEE MAP 25 4 21

25 4 16

1,291,000