

SE1/4 SEC. 25 T.27S. R.7W. W.M.
DOUGLAS COUNTY

REVISED ON
6-16-94

27 7 25D

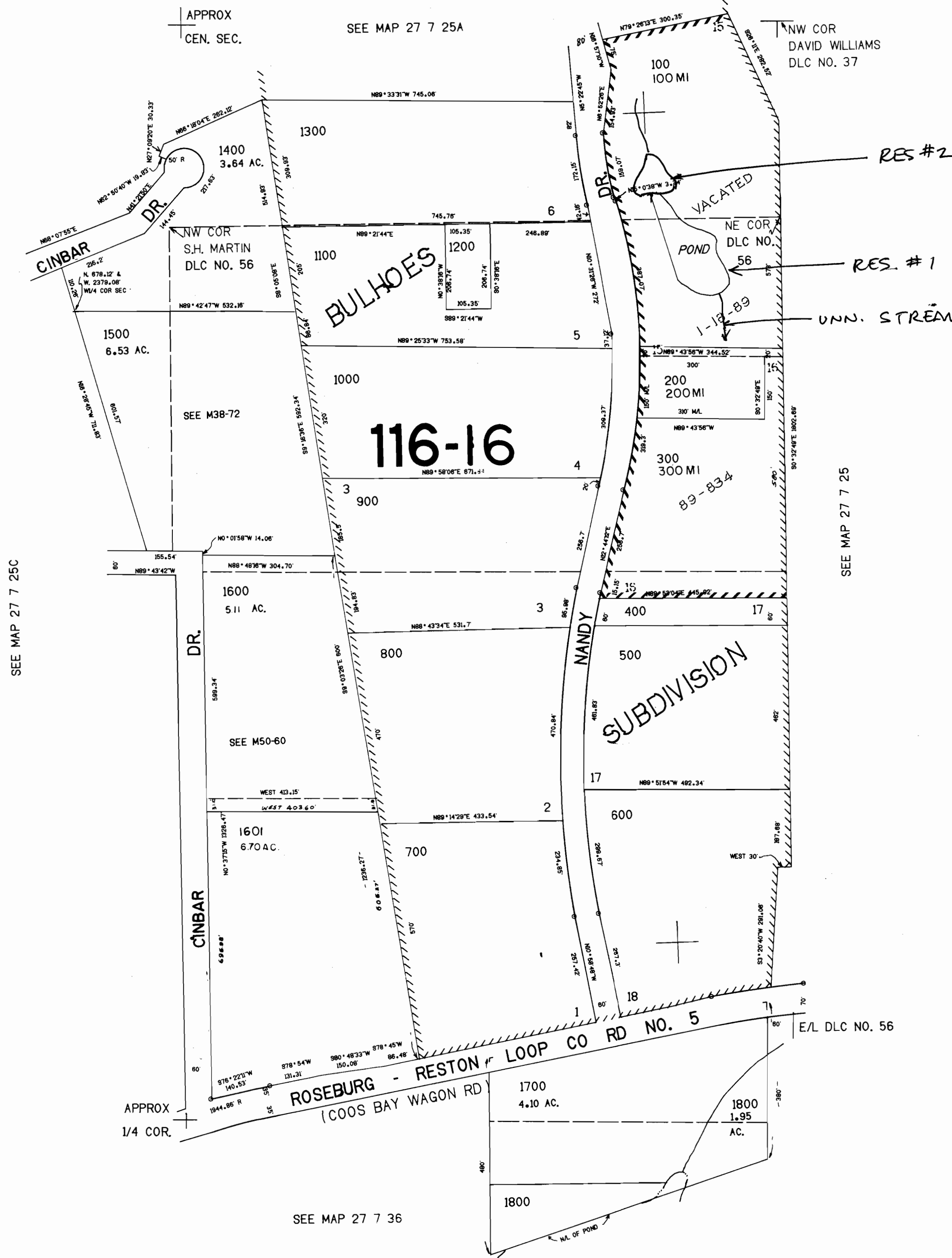
THIS MAP WAS PREPARED FOR
ASSESSMENT PURPOSE ONLY.

1"=200'

69437

CERTIFICATE NO.

APPROX
NE COR 1/4 COR.
DLC NO. 37



SEE MAP 27 7 25C

SEE MAP 27 7 25

SEE MAP 27 7 36

RECEIVED
DEC - 5 1994
WATER RESOURCES DEPT.
SALEM, OREGON

1.206.000

568,000

25	30
36 | 31

27 7 25D

R75241