

R75242

RECEIVED

DEC - 5 1994

5 31

SECTION 31 T.30 S. R. 5 W. W.M.
DOUGLAS COUNTY

WATER RESOURCES DEPT.
REVISED OR SALEM, OREGON
1-31-94

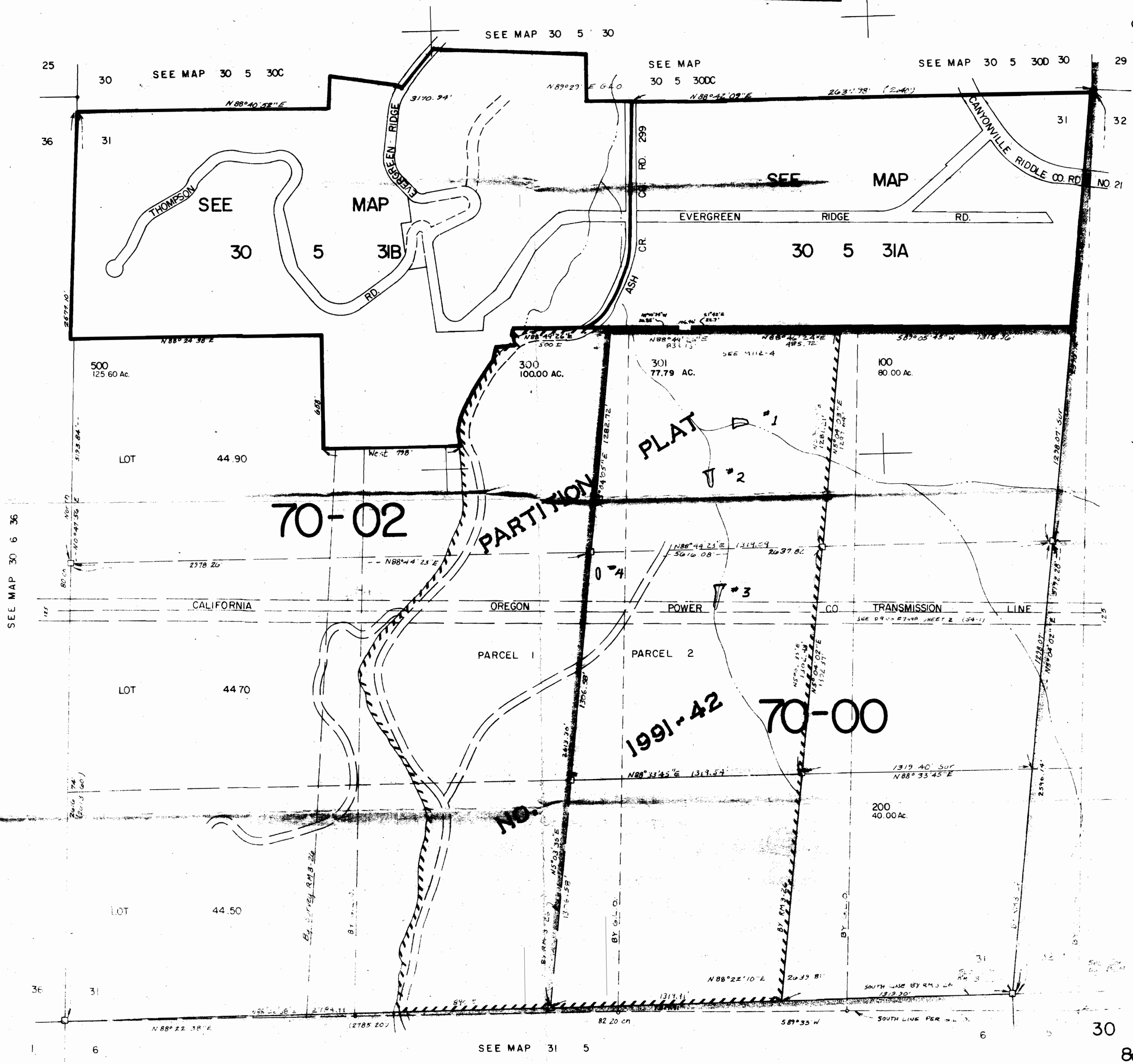
& INDEX

This map was prepared for
assessment purpose only

1" = 400'

CERTIFICATE NO. 69438

CANCELLED NO'S
400 302



SEE MAP 30 6 36

SEE MAP 30 5 32B

SEE MAP 30 5 32

SEE MAP 31 5

30 5 31
& INDEX