

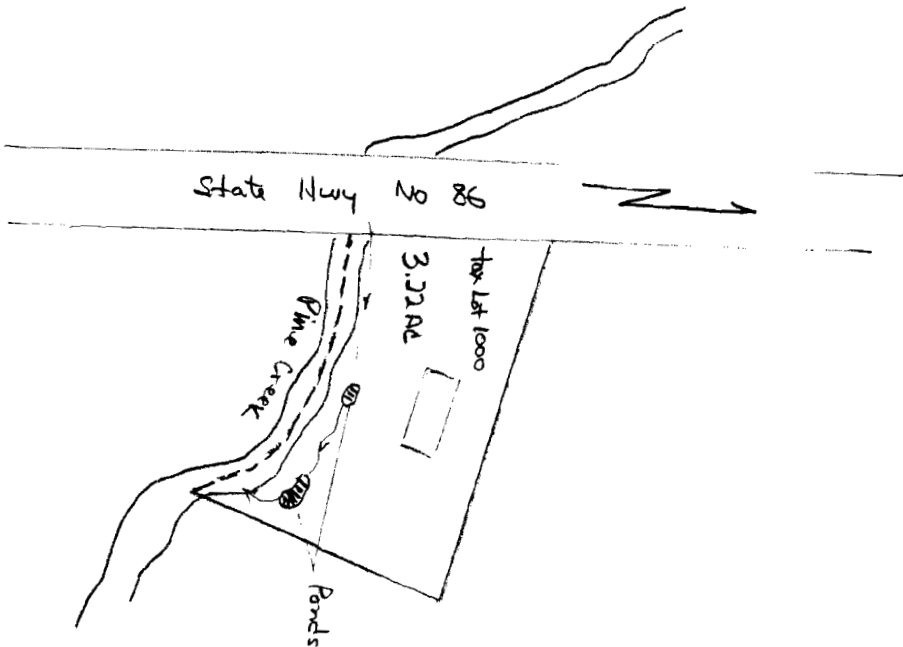
R 75243

"CERTIFICATE NO. 69439"

**RECEIVED**

NOV 10 1994

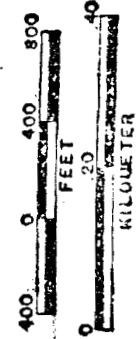
WATER RESOURCES DEPT.  
SALEM, OREGON



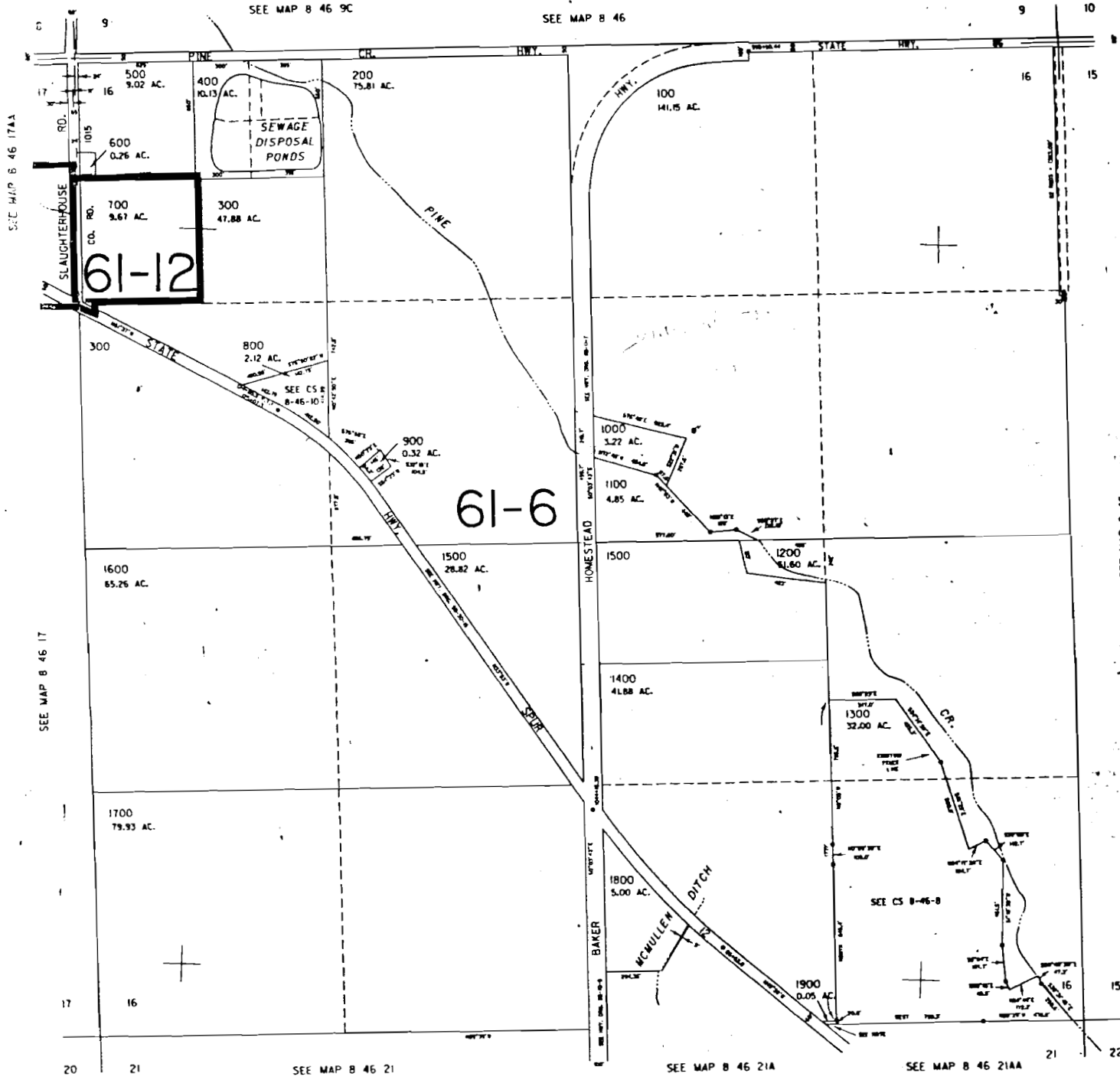
SECTION 16 T.8S. R.46E. W.M.  
BAKER COUNTY  
1" = 400'

THIS MAP WAS PREPARED FOR  
ASSESSMENT PURPOSE ONLY

SCALE 1:9600



09439



61-12

61-6

RECEIVED  
JUL 0 1 1992  
DEPT. of REVENUE STATE OF OREGON  
ASSESSMENT & APPRAISAL DIV.

SEE MAP B 46