

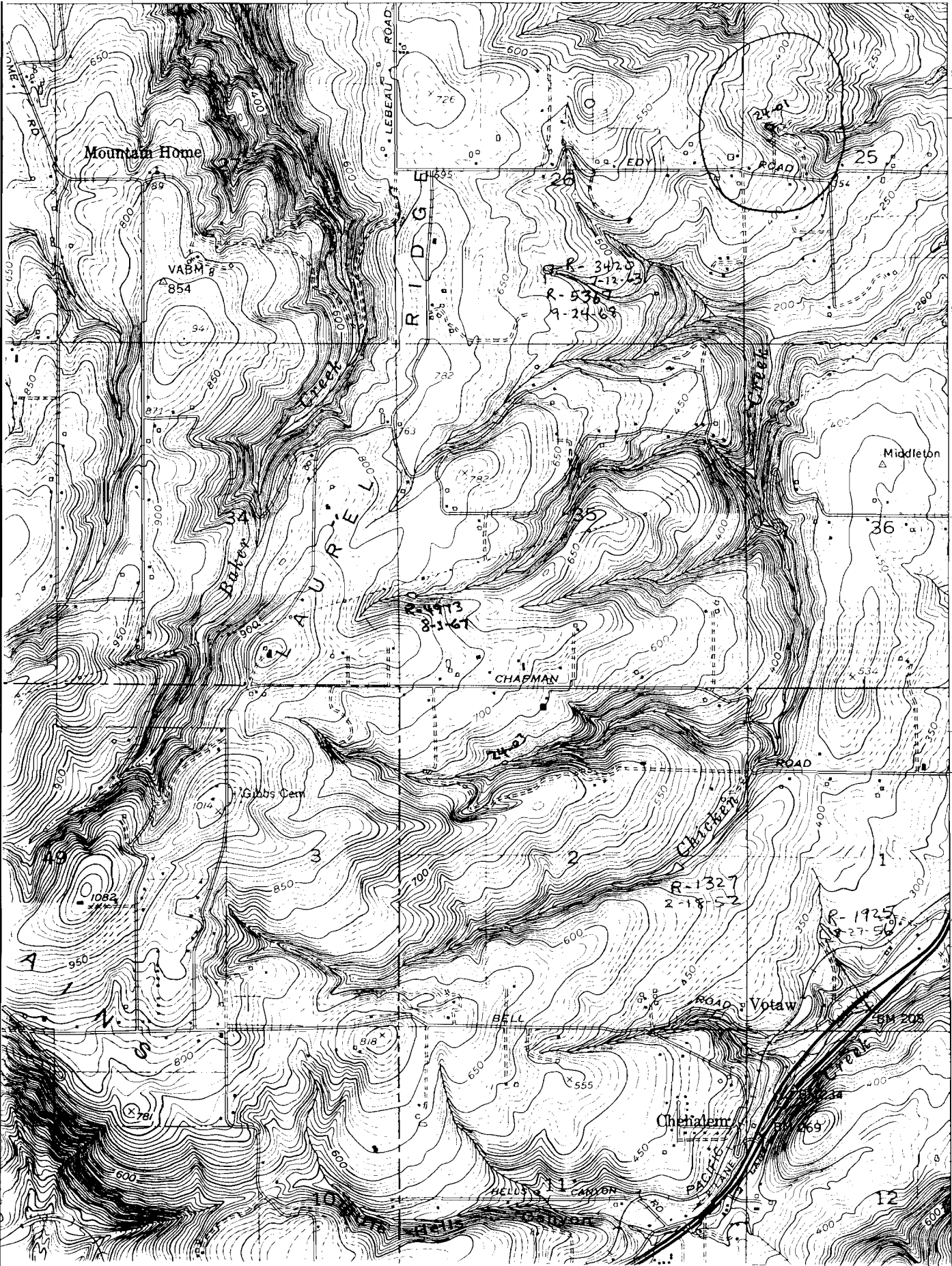
R75263

1961
Photo revised
1970

NEWBERG QUADRANGLE
OREGON
7.5 MINUTE SERIES (TOPOGRAPHIC)
SW/4 BEAVERTON 15' QUADRANGLE

1474 IV NE
(BEAVERTON)
20

506 55' 1 380,000 FEET 508 509 122°52'30" 45°22'30"



R-5349
5024 8-20-68
630 000
FEET

5023

5022

T. 2 S.
T. 3 S.

5021

SIX CORNERS 2.5 MI.
PORTLAND 18 MI.

20'

5019

87768

99

5018

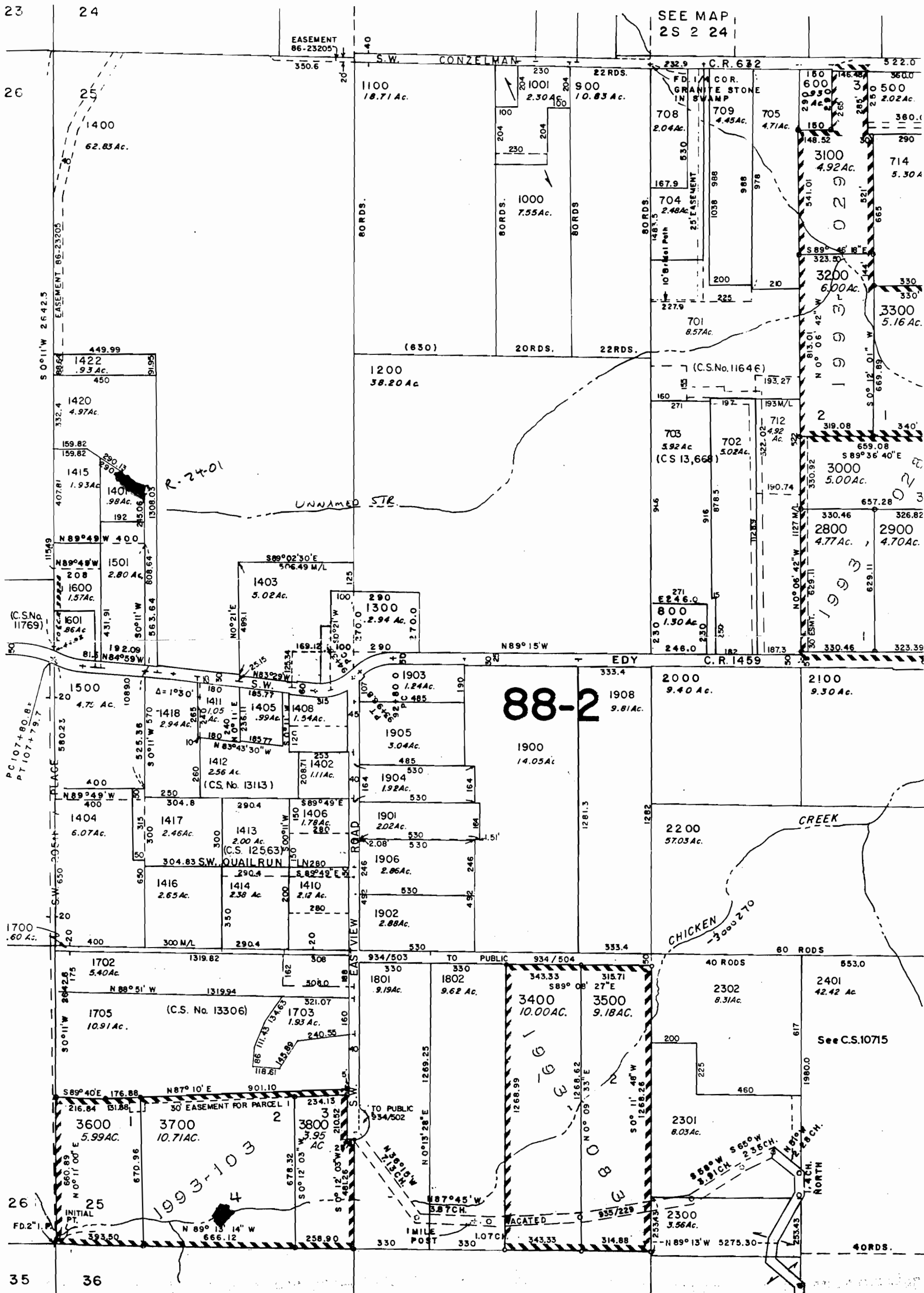
12

5017

SECTION 25 T2S R2W W.M.

WASHINGTON COUNTY OREGON

SCALE 1"=400'



SEE MAP 2S 2 24

SEE MAP 2 26

SEE MAP 2S 2 36

FOR ASSESSMENT PURPOSES ONLY DO NOT RELY ON FOR ANY OTHER USE

CERTIFICATE NO. 69448

RT5263