

SEC. 23 T8SR6WWM

POLK COUNTY

SCALE 1"=400'

8623

R75273

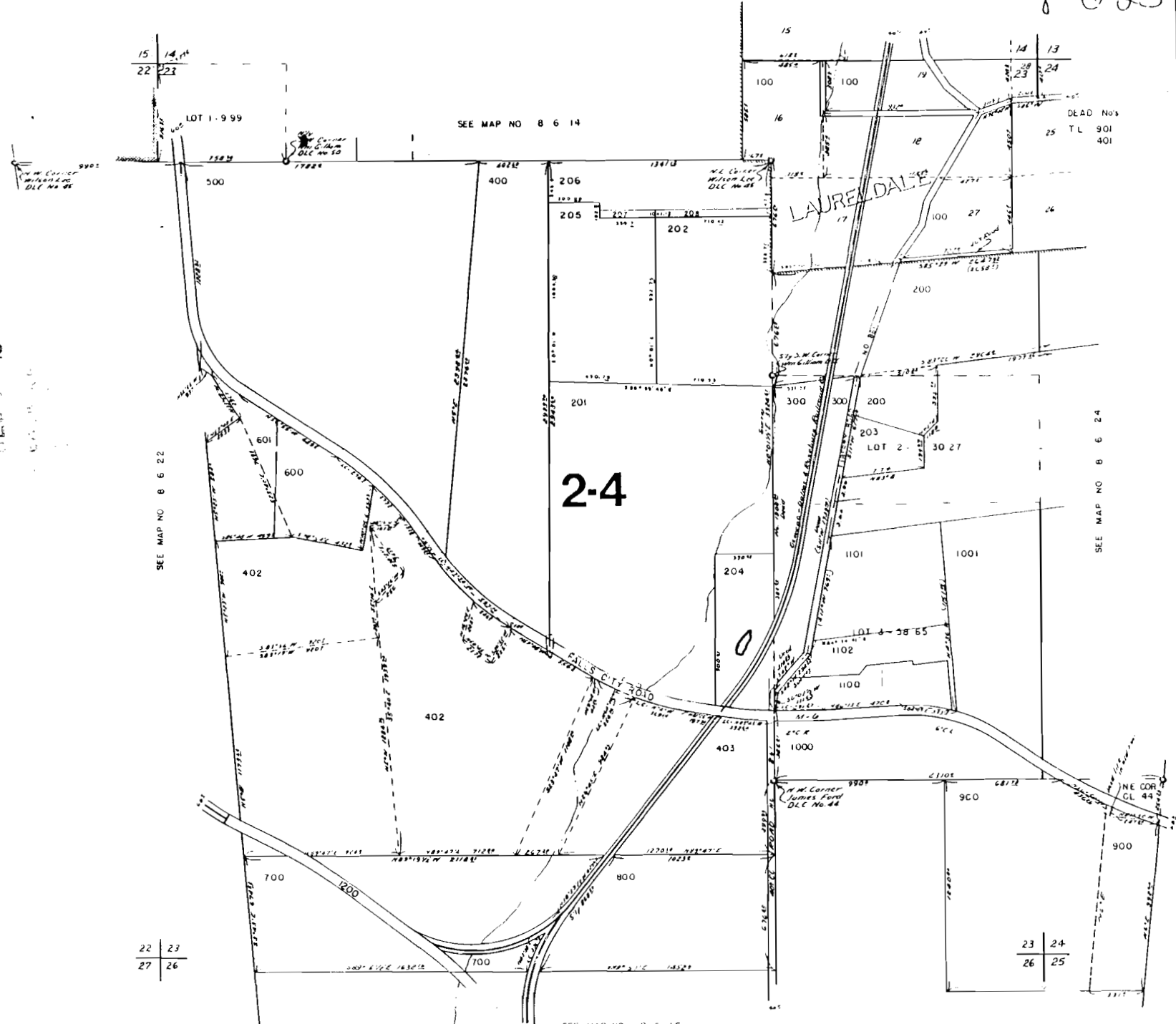
69455

CERTIFICATE NO.

SCALE 1:9600



DEC 97 19



DEAD No's
25 T L 901
401

SEE MAP NO 8 6 24

22 | 23
27 | 26

23 | 24
26 | 25

SEE MAP NO 8 6 46

I-7B-6
LO L

(F-518)

(E-441)

(E-443)

(E-540)

(E-442)

See J-8 (E-113)

A
203

A
35

84

(E-432)

(E-12)

(E-321)

B
4.1

C
11.5

D
7.8

(E-601)

(E-322) 9.7

(E-409)

F
6.1

A
8.2

To Dallas

(E-181)

3
14.0

(E-96)

A
14.7

(E-215)

23	24
26	25

A
6.2

Liberty Rd.

B
10.4

(E-484)

B
24.7

C
3.4

(E-179)

D
See J-18

R.R.

B
3.9

C
5.8

D
1.6

Bridgeport School

RECEIVED

DEC 07 1994

WATER RESOURCES CENTER
SALEM, OREGON

"CERTIFICATE NO. 69455"

(E-152)

(E-264)

R75273