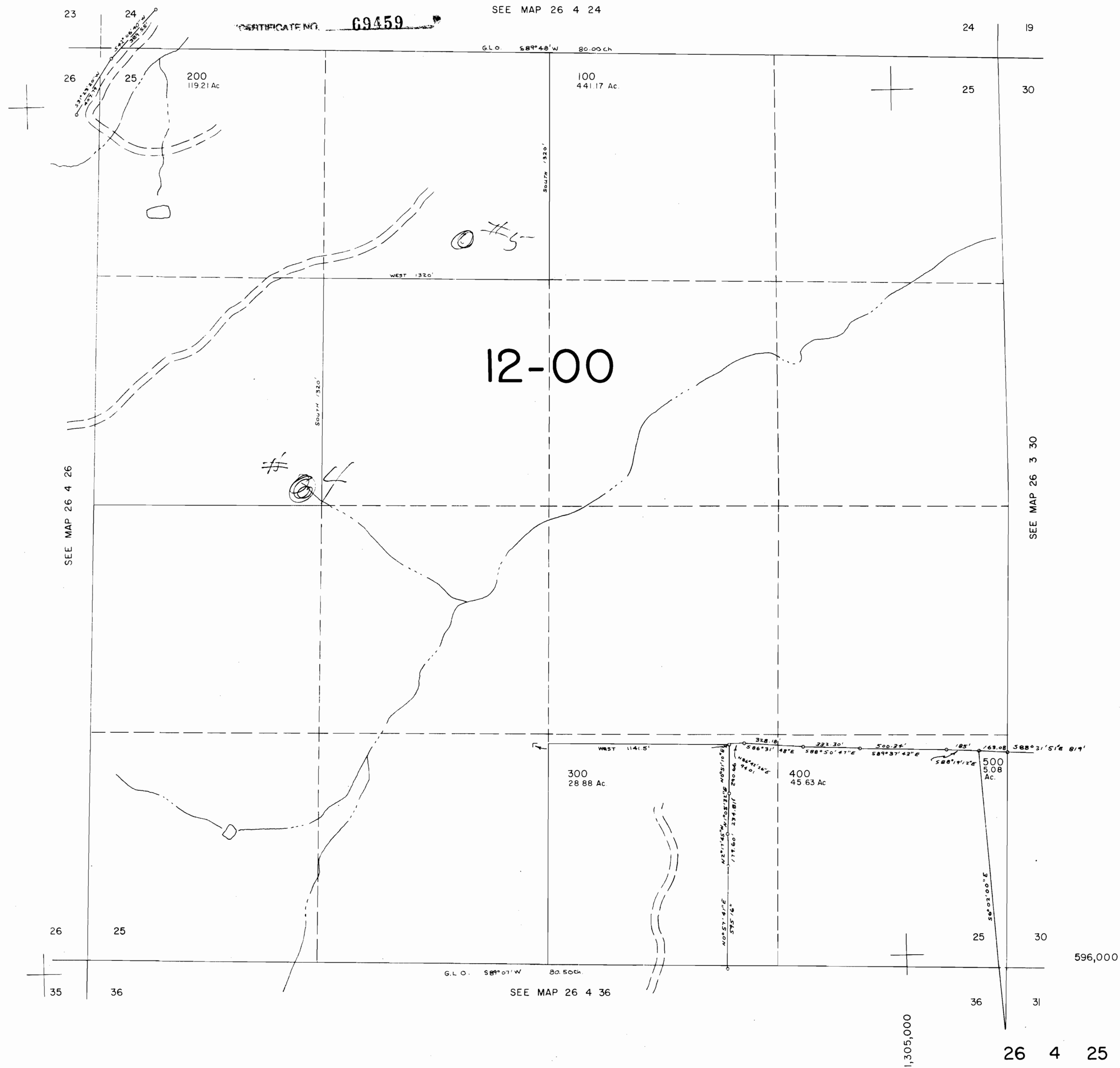


SECTION 25 T.26S. R.4W. W.M.  
DOUGLAS COUNTY

1" = 400'

THIS MAP WAS PREPARED FOR  
ASSESSMENT PURPOSE ONLY.



R75217

1,305,000

596,000

SECTION 26 T.26S. R.4W. W.M.  
DOUGLAS COUNTY

THIS MAP WAS PREPARED FOR  
ASSESSMENT PURPOSE ONLY.

1"=400'

CERTIFICATE NO. **69459**

SEE MAP 26 4 23

SEE MI-78

S89°48'W 80 CH GLO

23 24

22 23

27 26

400  
80.00 AC.

300  
80.00 AC.

200  
30.49 AC.

25 26

100  
49.51 AC.

500  
200.00 AC.

**12-00**

600  
122.24 AC.

WEST 1320' M/L

500

SEE MAP 26 4 25

SEE MAP 26 4 27

NORTH 80' CH

NORTH 80' CH

NORTH 1320'

WEST 1320'

700  
77.76 AC.

27 26

26 25

34 35

35 36

N89°31'W 80 CH GLO

SEE MAP 26 4 35

596.000

1,300.000

R75317

SECTION 24 T.26S. R.4W. W.M.  
DOUGLAS COUNTY

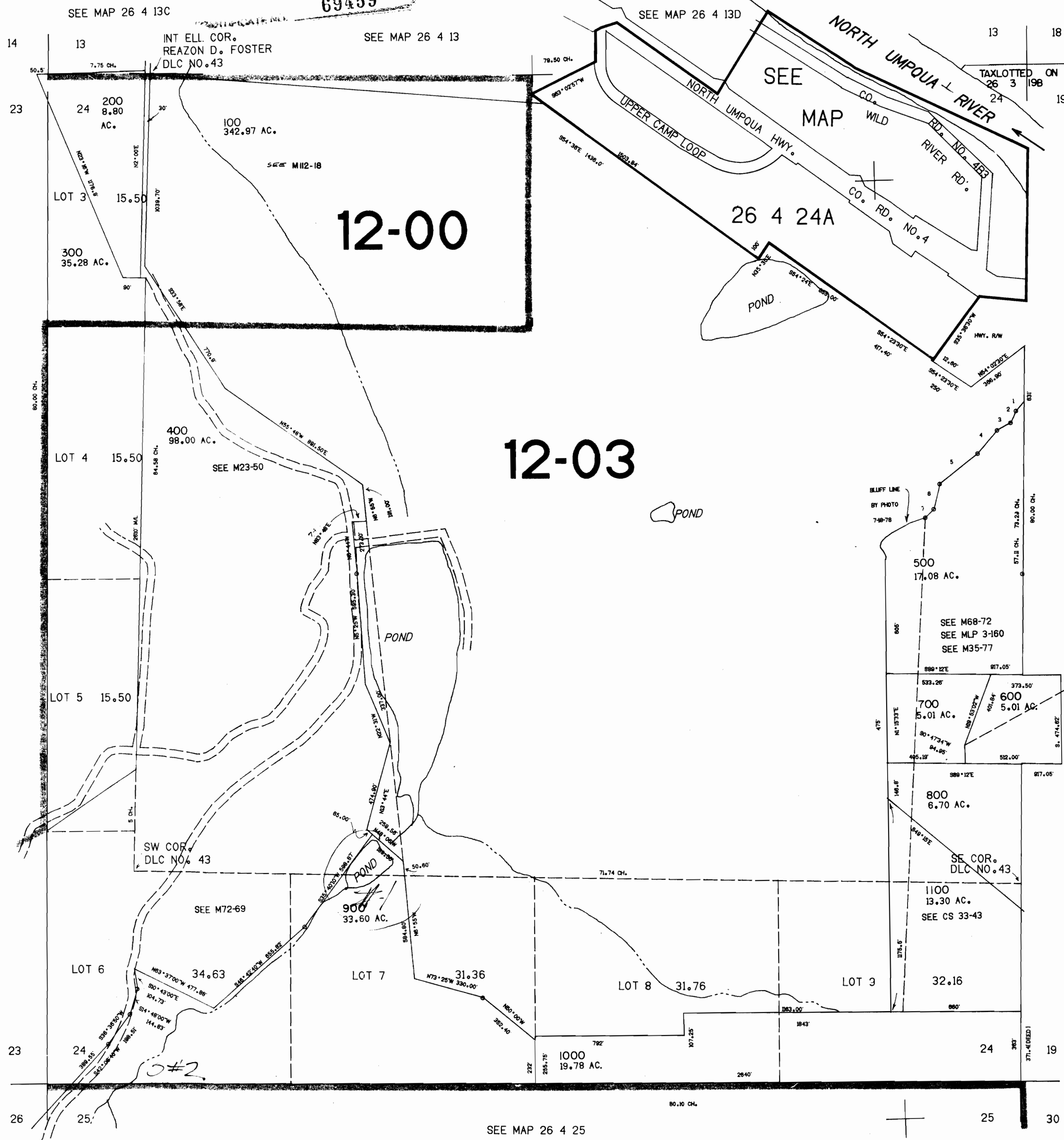
REVISED ON  
9 - 3 - 93

26 4 24  
& INDEX

THIS MAP WAS PREPARED FOR  
ASSESSMENT PURPOSE ONLY.

1"=400'

69459



CANCELLED NO.'S

606.000

- PARCEL 200
1. 843°18'W 84.80'
  2. 831°58'W 87.50'
  3. 862°45'W 80.00'
  4. 840°25'W 184.80'
  5. 850°55'W 254.40'
  6. 822°26'W 130.50'
  7. 848°39'W 85.70'

SEE MAP 26 3 19B

26 4 24  
& INDEX

R75277