

T. 1N. R. 44E. W.M.
WALLOWA COUNTY

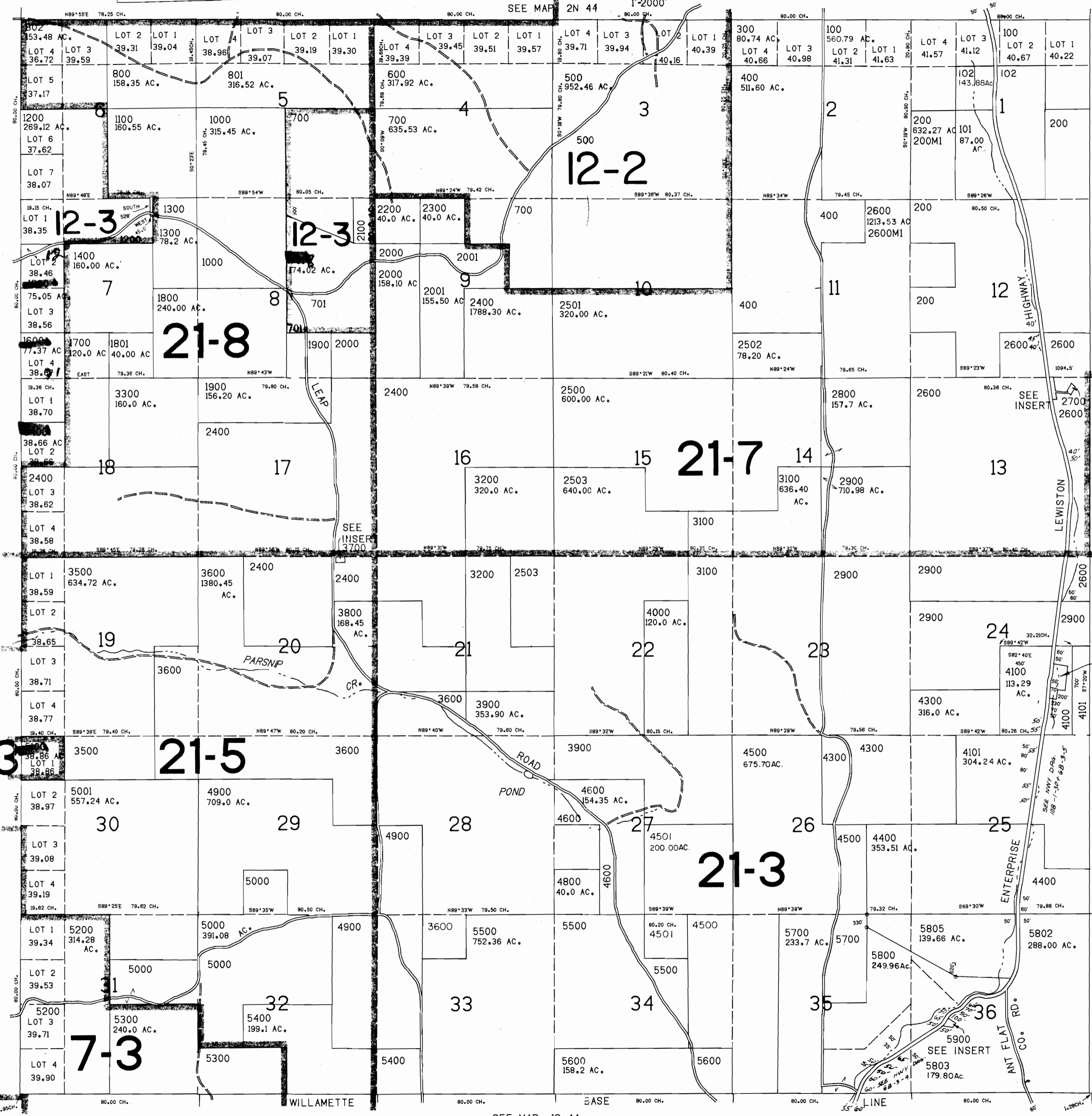
THIS MAP WAS PREPARED FOR
ASSESSMENT PURPOSE ONLY.

SEE MAP 2N 44 1"-2000'

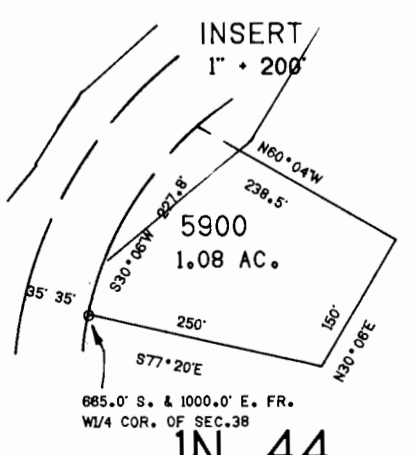
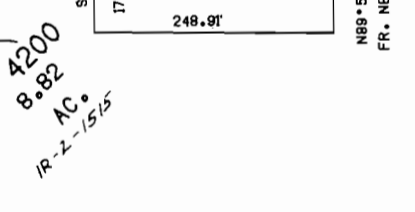
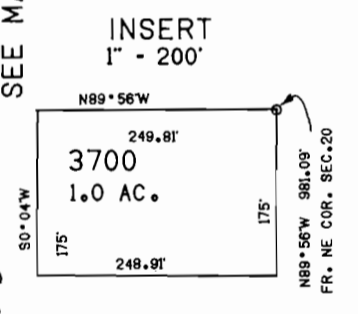
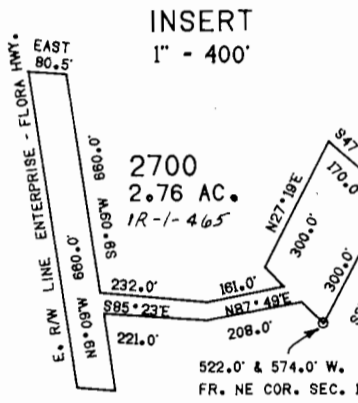
CANCELLED
PARCEL NO.'S

- 900
- 3000
- 3501
- 3502
- 5801

R-75295
 CERTIFICATE NO. 69466
 SEE MAP IN 43



1994
PT.



SEE MAP 1S 44

R75295

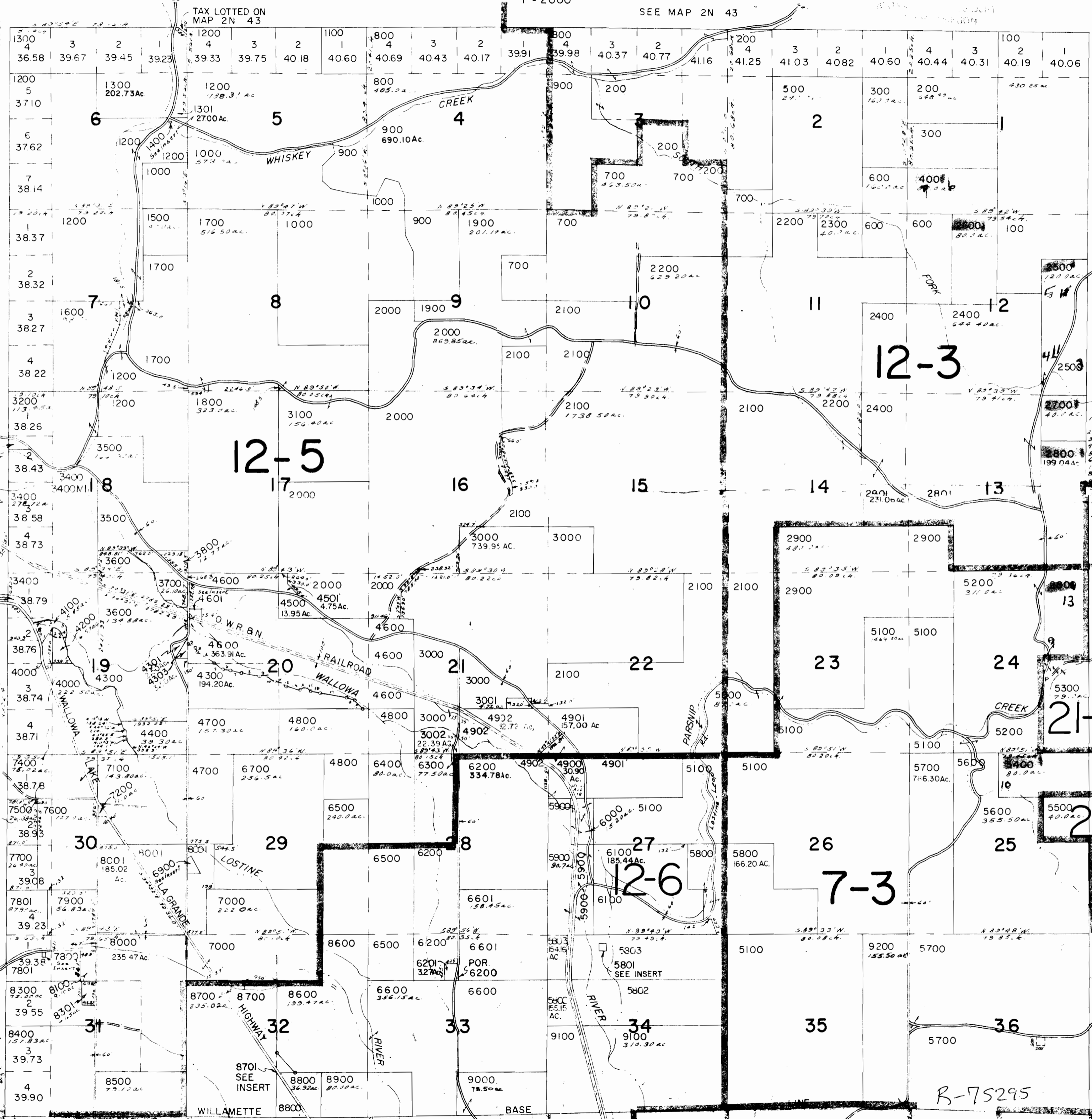
THIS MAP WAS PREPARED FOR
ASSESSMENT PURPOSES ONLY.

T.1N. R.43E. W.M.
WALLOWA COUNTY

NOV 1994

1" = 2000'

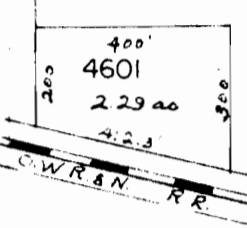
SEE MAP 2N 43



INSERT
Sec 6
1" = 400'

18 17
19 20

INSERT
1" = 400'



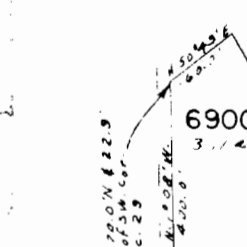
INSERT
Sec 18
1" = 400'



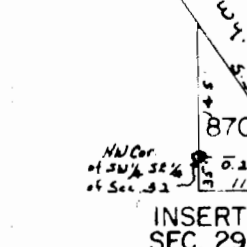
TAX LOT 4100
Sec 19

- 1 N 01°40' E 214.64'
- 2 S 87°31' E 227'
- 3 S 80°31' E 310'
- 4 S 84°23' W 933.9'
- 5 N 52°23' W 376'
- 6 S 81°23' W 552.57'
- 7 S 18°10' E 124.7'
- 8 S 1°19' E 203.42'
- 9 S 10°11' E 342.4'

INSERT
Sec 29
1" = 400'



INSERT
1" = 200'



INSERT
SEC. 29
1" = 200'



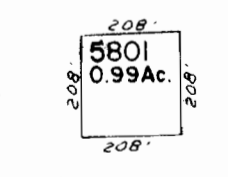
CANCELLED NO.'S
4302
4602
8601
8702
5702
5701
7300
6800
8200

CERTIFICATE NO. 69466
R 75295

PARCEL 4600
1. B&P 5215785 FROM NW COR. SEC. 20.
2. 74.561°16'14" E 175.77'
3. 74.536°20'26" E 146.30'
4. 74.526°06'18" E 591.39'
5. 74.561°35'56" E 292.90'
6. 74.526°33'14" E 202.59'
7. 74.526°33'14" E 219.08'
8. 74.526°33'14" E 219.08'
9. 74.526°33'14" E 219.08'
10. 74.526°33'14" E 219.08'
11. 74.526°33'14" E 219.08'
12. 74.526°33'14" E 219.08'
13. 74.526°33'14" E 219.08'
14. 74.526°33'14" E 219.08'
15. 74.526°33'14" E 219.08'
16. 74.526°33'14" E 219.08'
17. 74.526°33'14" E 219.08'
18. 74.526°33'14" E 219.08'
19. 74.526°33'14" E 219.08'
20. 74.526°33'14" E 219.08'

SEE MAP IN 44

INSERT
SEC 34
1" = 400'



SEE MAP IS 43

R-75295