

R75299

Rich

NE1/4 SEC.22 T.32S. R.5W. W.M.
DOUGLAS COUNTY

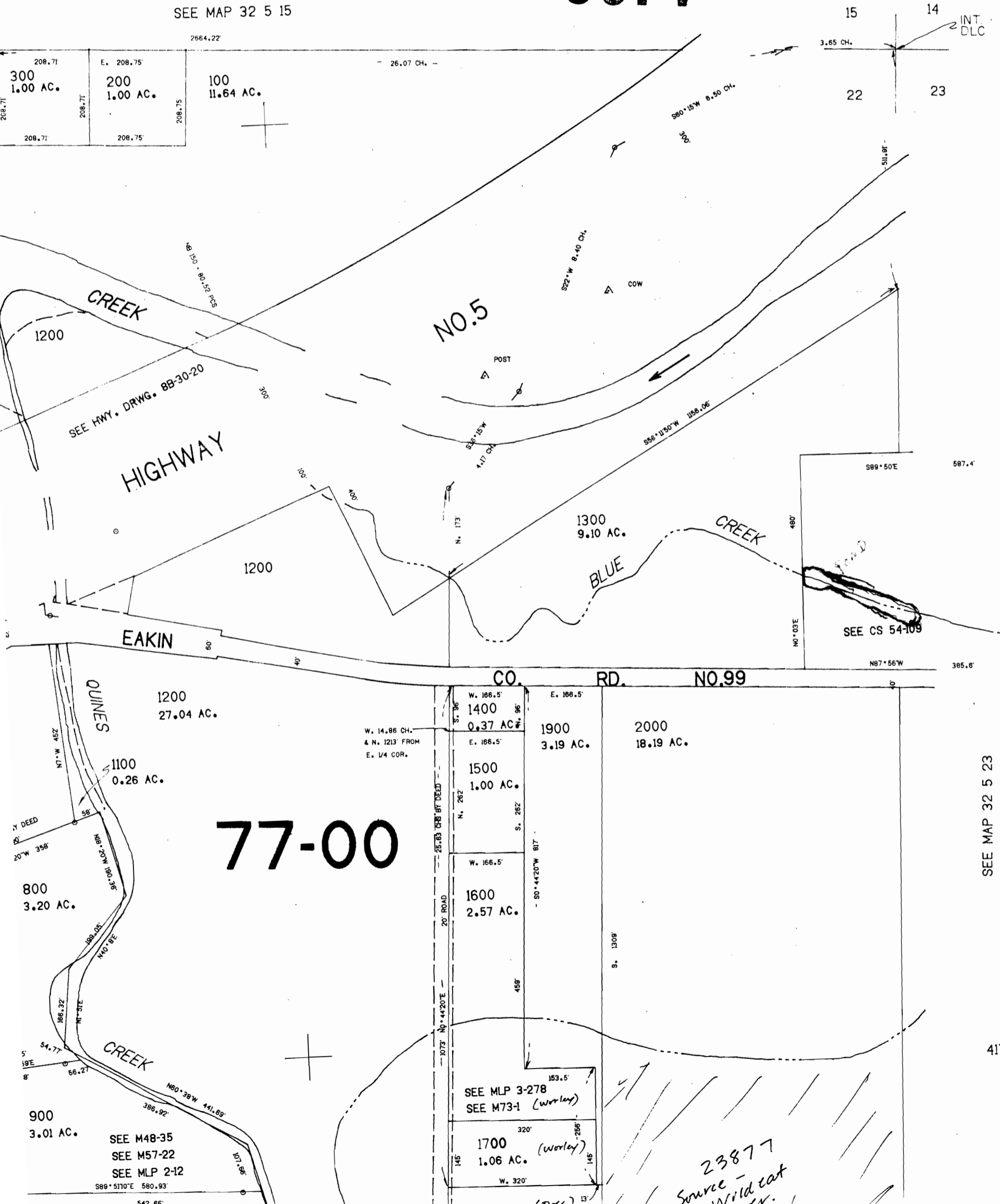
1"=200'

R-75299 75541
"CERTIFICATE NO. ~~69470~~"

32 5 2

TEMPORARY DRAFT
COPY

SEE MAP 32 5 15



77-00

SEE MAP 32 5 23

417.

23877
Source - Wildcat