

SECTION 13 T.32S. R.5W. W.M.
DOUGLAS COUNTY

REVISED ON
3-17-92

32 5 13

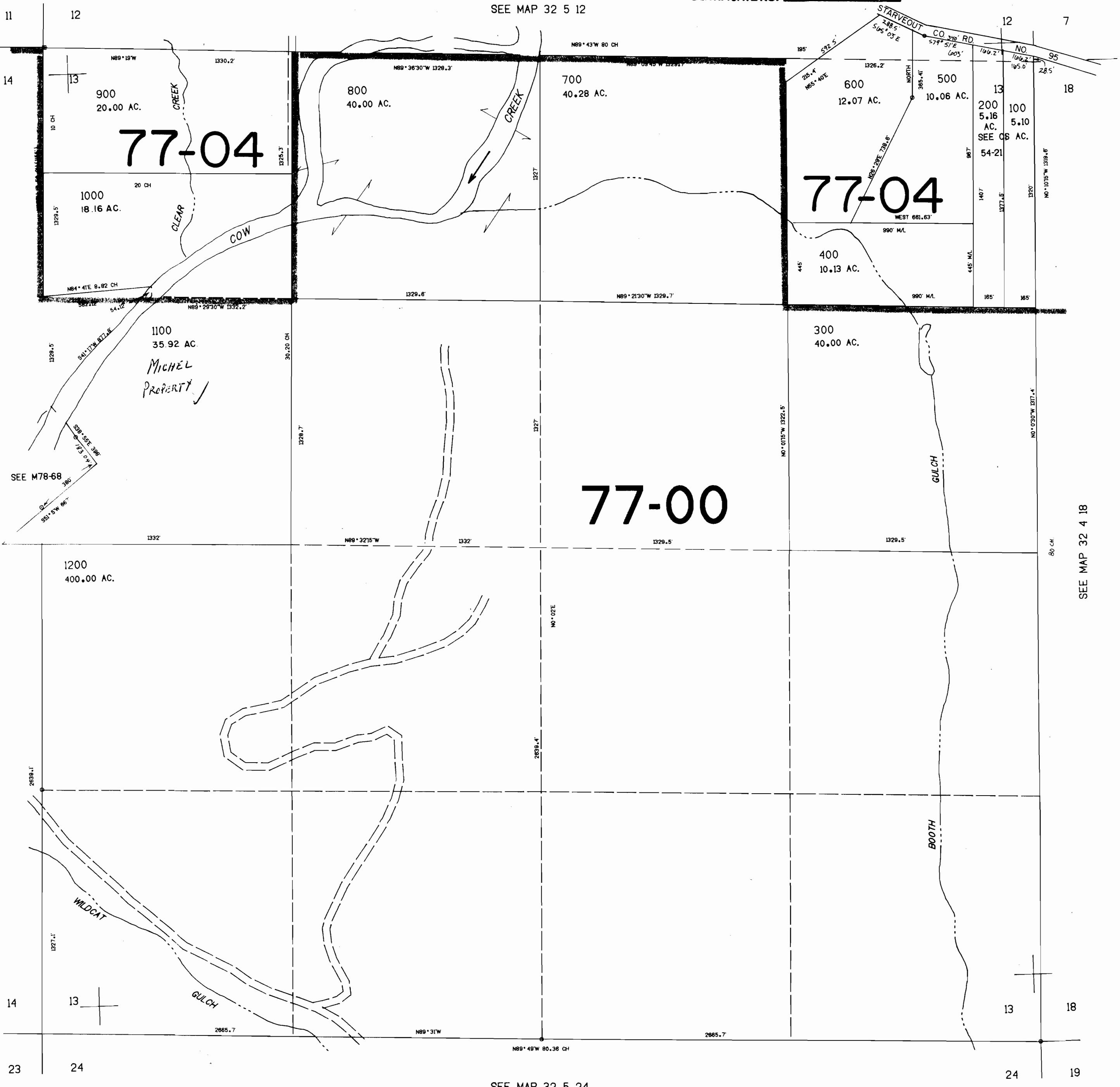
THIS MAP WAS PREPARED FOR
ASSESSMENT PURPOSE ONLY.

1"=400'

Application No. 75355
Permit No.

CERTIFICATE NO. 69509

SEE MAP 32 5 12



SEE MAP 32 5 14

SEE MAP 32 4 18

SEE MAP 32 5 24

1263.000

32 5 13



IN STOCK
AERIAL PHOTO
PROGRAM
WAC
CORPORATION
800-648-8088 620 CONGER STREET
503-642-5169 EUGENE, OR 97401
COPYRIGHT 1990 WAC CORPORATION

DOUGLAS COUNTY SURVEYOR
T32S, R5W, SEC 13
1" = 400' 1990
Scale & corners are approximate
N

Application No. 75355
Permit No.

RECORDED
DEC - 9 1994
WATER RESOURCES
SALEM, OREGON