

KEN GARDNER

SEC. 35 T8SR6WWM

8 6 35

POLK COUNTY

SEE MAP NO 8 6 26

SCALE 1" = 400'

RECEIVED

DEC 12 1994

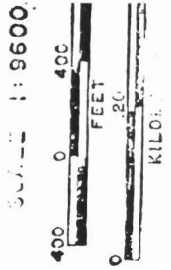
WATER RESOURCES
SALEM, OREGON

DEAD NUMBERS
TL 590

R75363

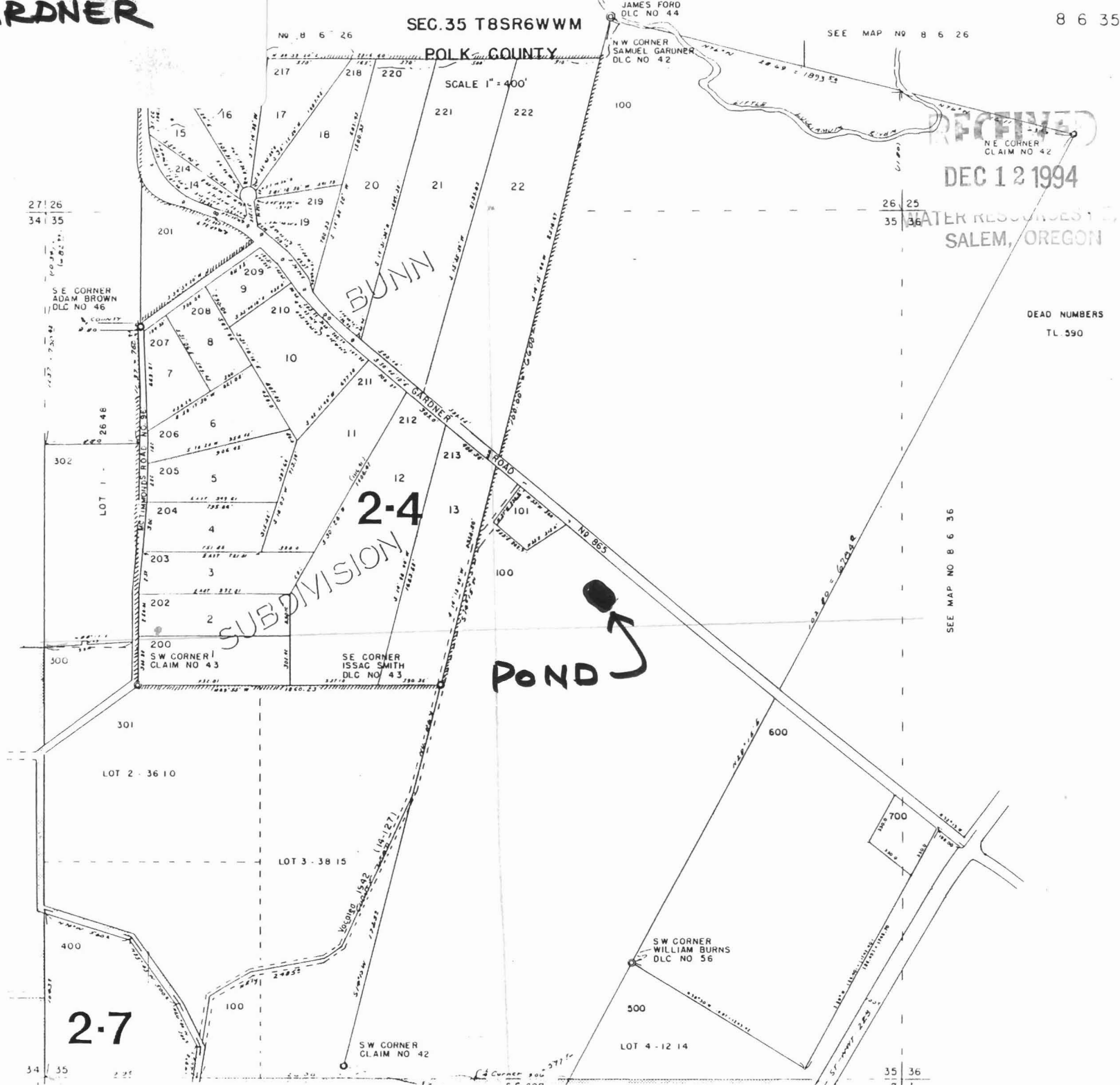
69514

CERTIFICATE NO.



SEE MAP NO 8 6 34

SEE MAP NO 8 6 36



2-7

2-4

POND

SUBDIVISION

BUNN

GARDNER ROAD

SW CORNER
WILLIAM BURNS
DLC NO 36

SE CORNER
ADAM BROWN
DLC NO 46

SW CORNER
ISSAC SMITH
DLC NO 43

JAMES FORD
DLC NO 44

NW CORNER
SAMUEL GARNER
DLC NO 42

NE CORNER
CLAIM NO 42

SW CORNER
CLAIM NO 42

27 26
34 35

26 25
35 36

34 35

35 36