

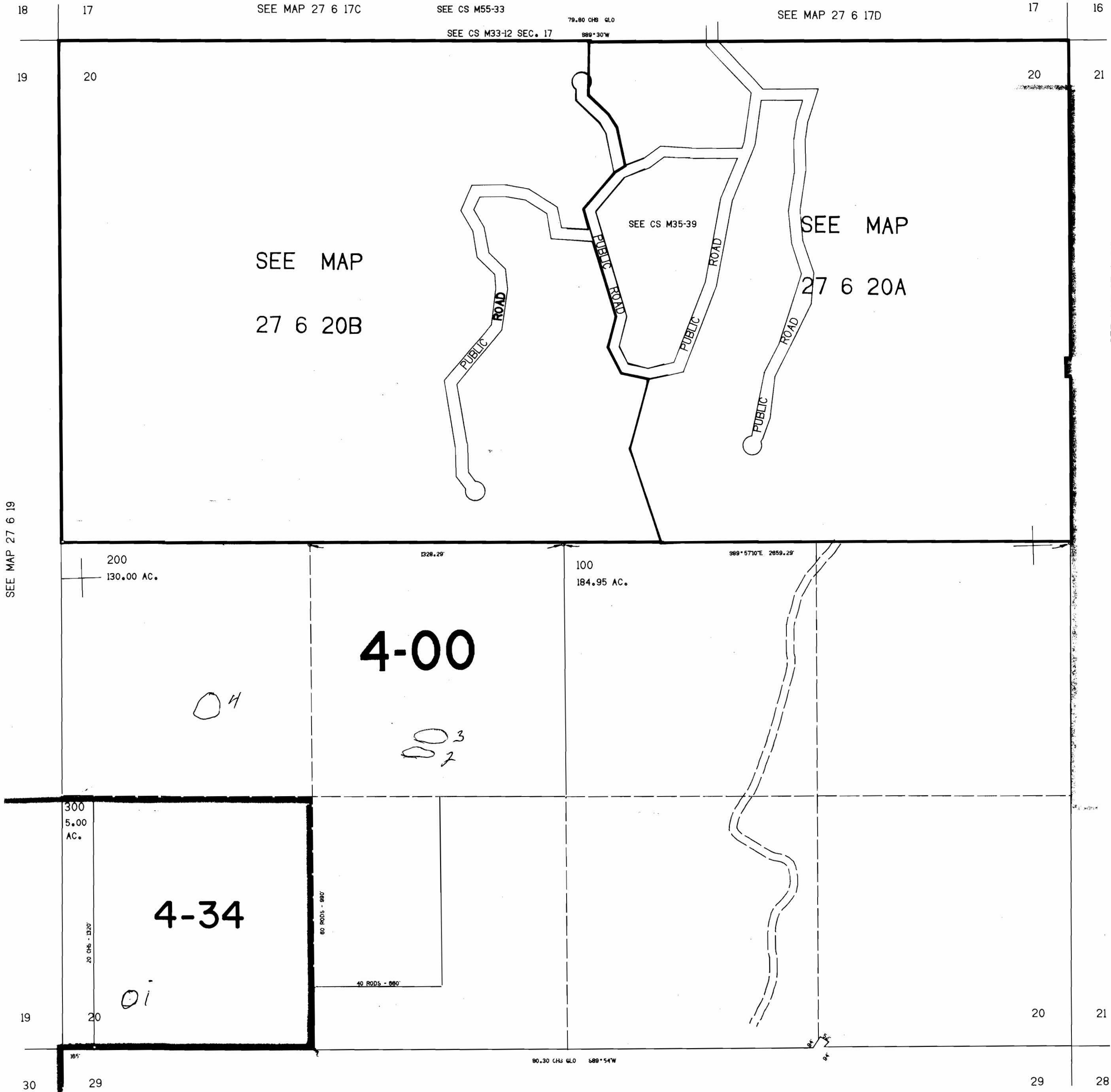
SECTION 20 T.27S. R.6W. W.M.  
DOUGLAS COUNTY

REVISED ON  
4-29-93

THIS MAP WAS PREPARED FOR  
ASSESSMENT PURPOSE ONLY.

1"=400'

CERTIFICATE NO. **69524**



SEE MAP 27 6 21B

SEE MAP 27 6 21

DEC 1 1994

SEE MAP 27 6 19

1,215,000