

SECTION 27 T.27S. R.7W. W.M.  
DOUGLAS COUNTY

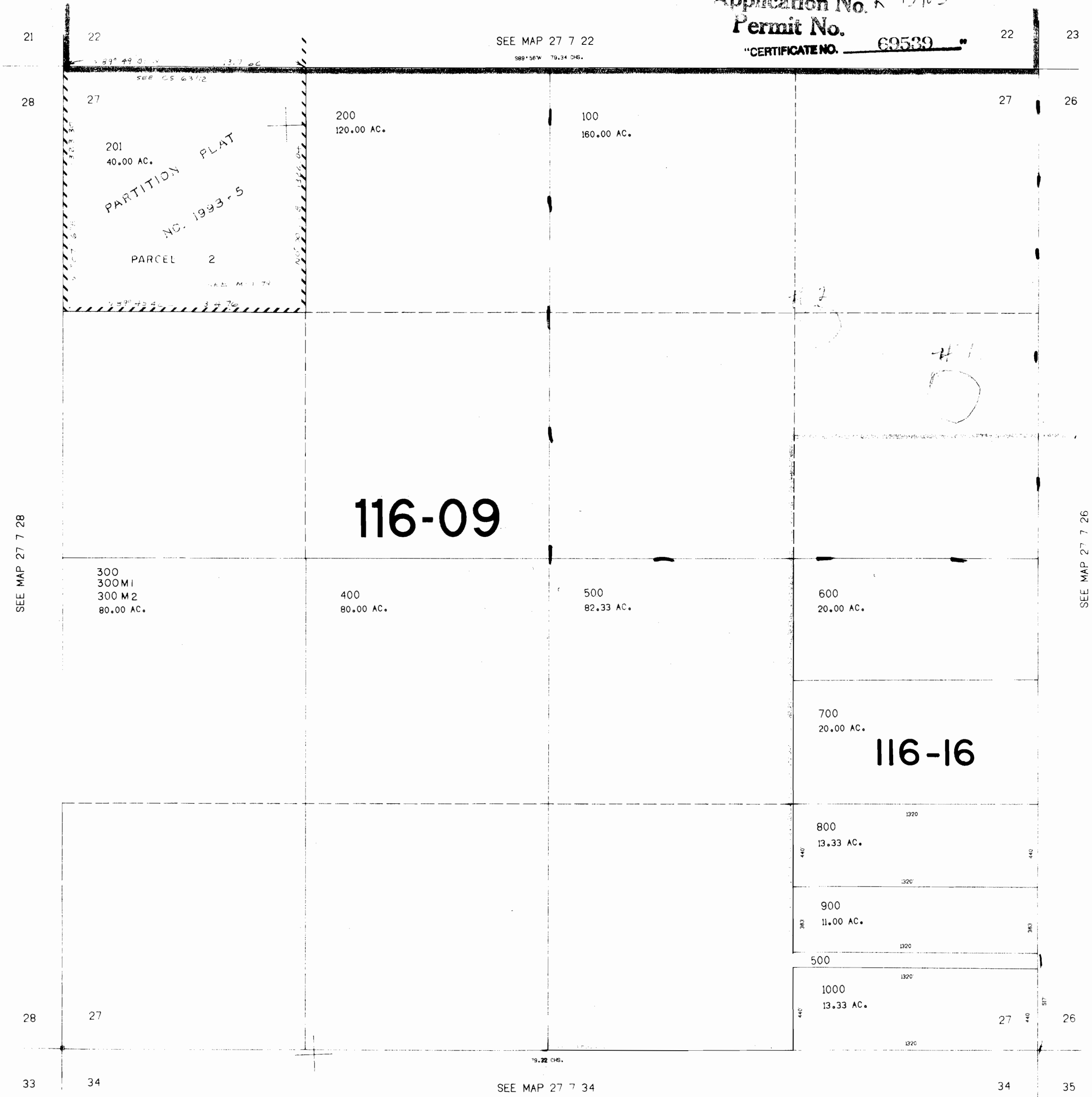
REVISED ON  
1-29-93

27 7 27

THIS MAP WAS PREPARED FOR  
ASSESSMENT PURPOSE ONLY.

1"=400'

Application No. R-15403  
Permit No. 69539  
"CERTIFICATE NO. 69539"



116-09

116-16

568.000

1.195.000

27 7 27