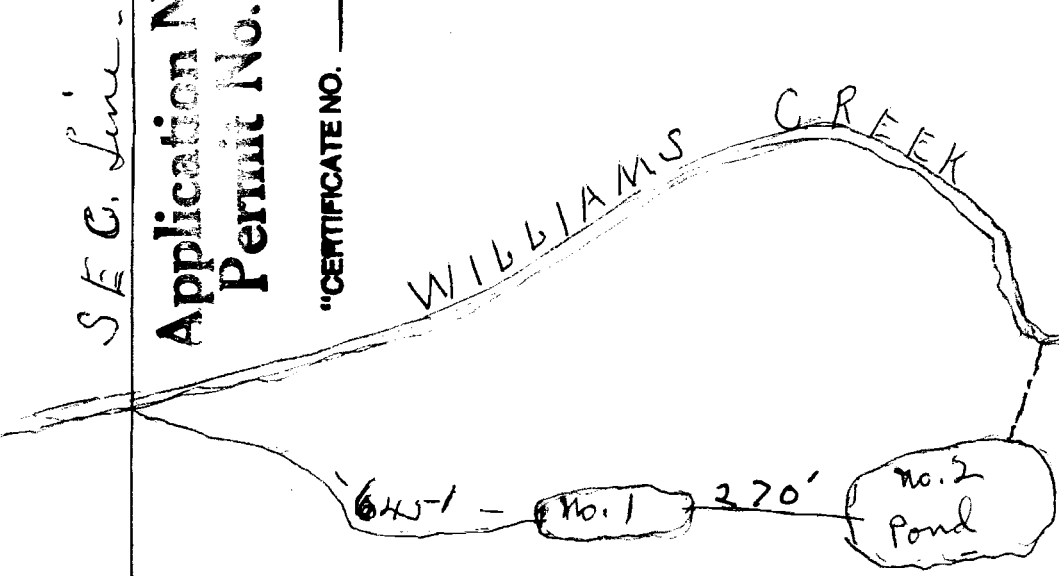


S.E. C. Line - 5

Application No R-15424<sup>H</sup>  
Permit No.

"CERTIFICATE NO. 69558"

100 1 1504



Center of Williams Creek property North line.

No. 1 pond - 90' x 18' - 4 1/2' deep

No. 2 pond - 72' x 156' - 6' deep

H' banks on both ponds

Point of diversion on West section line 755' North of

Corner of sections - H-5-8-9

645' Point of diversion to

No. 1 pond.

Ponds on tax lot - 1H03

SW 1/4 of SW 1/4 - Sec 14 - Twp 39S  
R-5W

Ponds used for livestock watering

Wild duck nesting

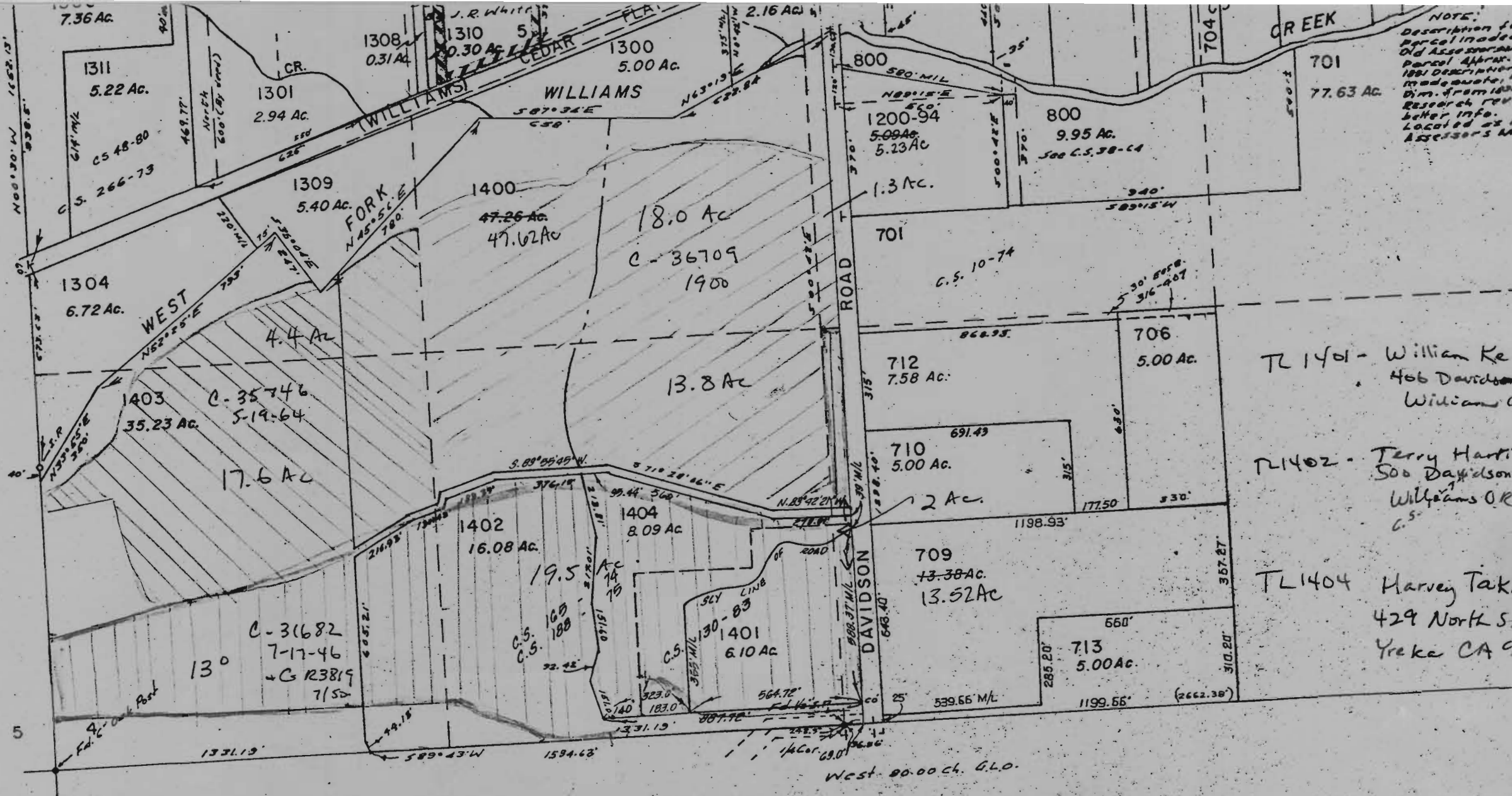
fish spawning

12" plastic pipe used open ditch overflow at one end of pond

Corner of sections - H-5-8-9

- 755'

South line section H



NOTE: Description of parcel in older Old Assessor's Parcel Appraisals 1881 Description made available by Dim. from 1881 Research review better info. Located as Assessor's Map

TL 1401 - William Ke  
406 Davidson  
Williams C

TL 1402 - Terry Hart  
500 Davidson  
Williams OK  
C.S.

TL 1404 Harvey Tak  
429 North S  
Yreka CA C

Scale may not be exact.  
Barb Kincaid  
12-1-94.

C.S. 55-62  
C.S. 89-62

SEE MAP 39 5 9

C-31682 Primary  
GR 3819 Supplemental

CERTIFICATE NO. 69558

Application No. R-75424  
Permit No.