

This map was prepared for assessment purpose only.

SE 1/4 SEC. 25 T.30S. R.6W. W.M.
DOUGLAS COUNTY

1" = 200'

RECEIVED

DEC 14 1994
WATER RESOURCES DEPT.
SALEM, OREGON

30 6 25D

Application No. R-75438

Permit No.

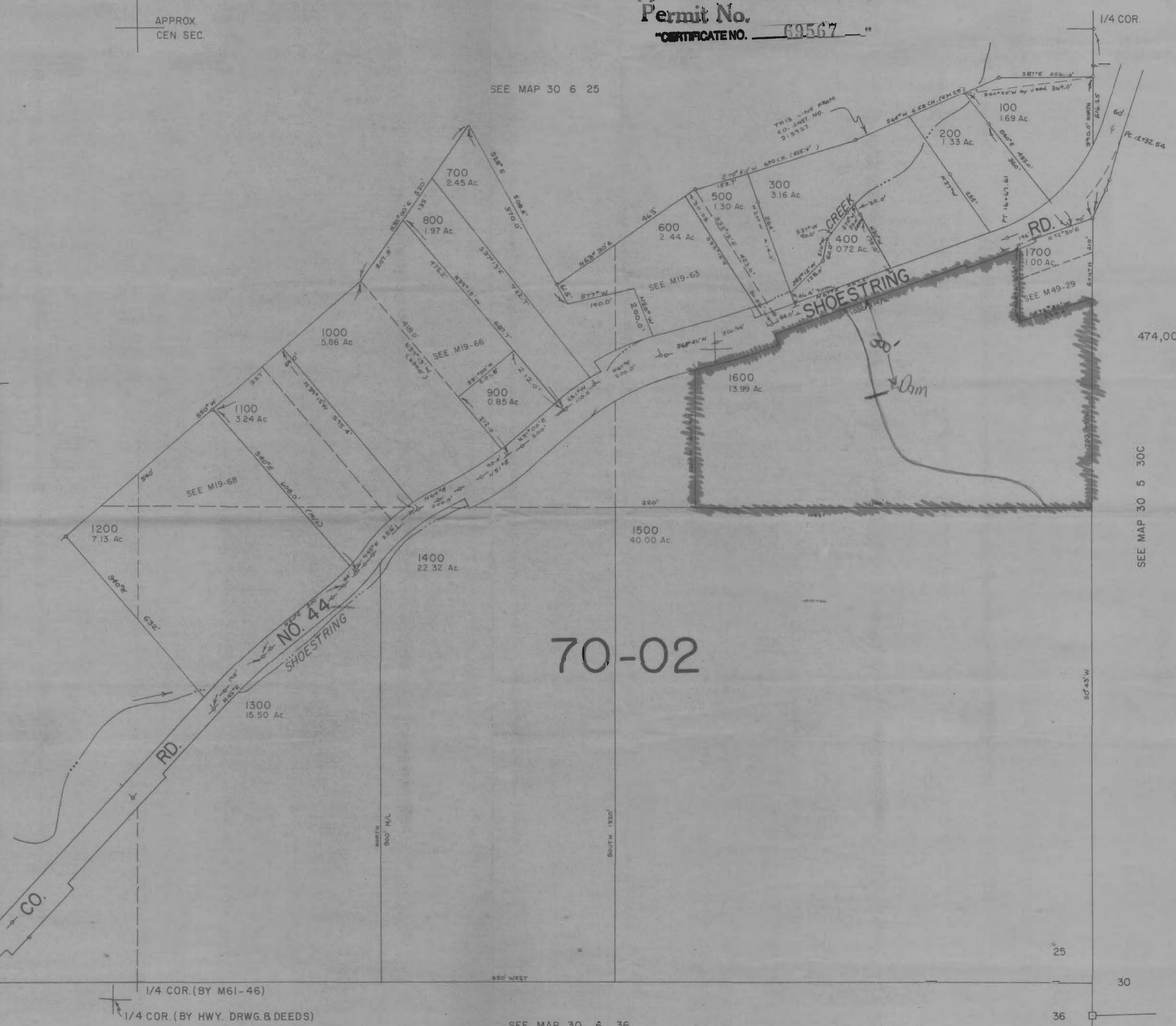
CERTIFICATE NO. 69567

APPROX
CEN. SEC.

SEE MAP 30 6 25

+

SEE MAP 30 6 25C



474,000

SEE MAP 30 5 30C

70-02

SEE MAP 30 6 36

1,237,000

12-8-94

30 6 25D