

SECTION 1 T.28S. R.7W. W.M.  
DOUGLAS COUNTY

REVISED ON  
8-13-93

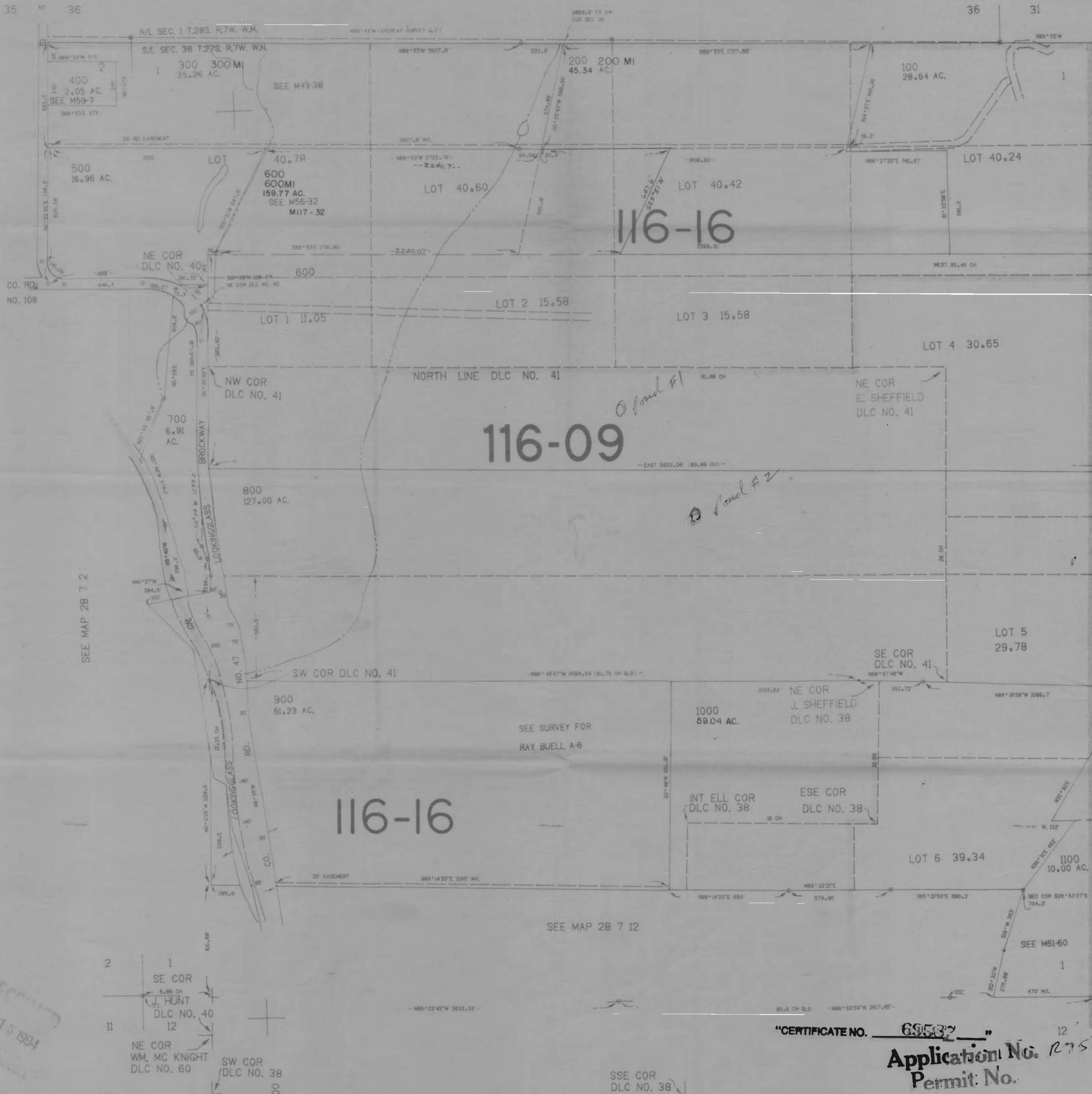
28 7 1

THIS MAP WAS PREPARED FOR  
ASSESSMENT PURPOSE ONLY.

1"=400'

SEE MAP 27 7 36C

SEE MAP 27 7 36



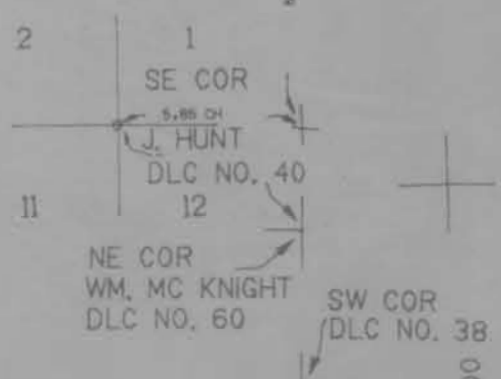
CANCELLED NO'S  
261

SEE MAP 28 6 6

SEE MAP 28 7 2

SEE MAP 28 7 12

RECEIVED  
DEC 15 1994  
WATER RESOURCES  
SALEM, OREGON



"CERTIFICATE NO. 69537"  
 Application No. 275469  
 Permit No. 12 7

28 7 1