

This map was prepared for assessment purpose only.

SECTION 24 T.30S. R. 5 W. W.M. DOUGLAS COUNTY

1" = 400'

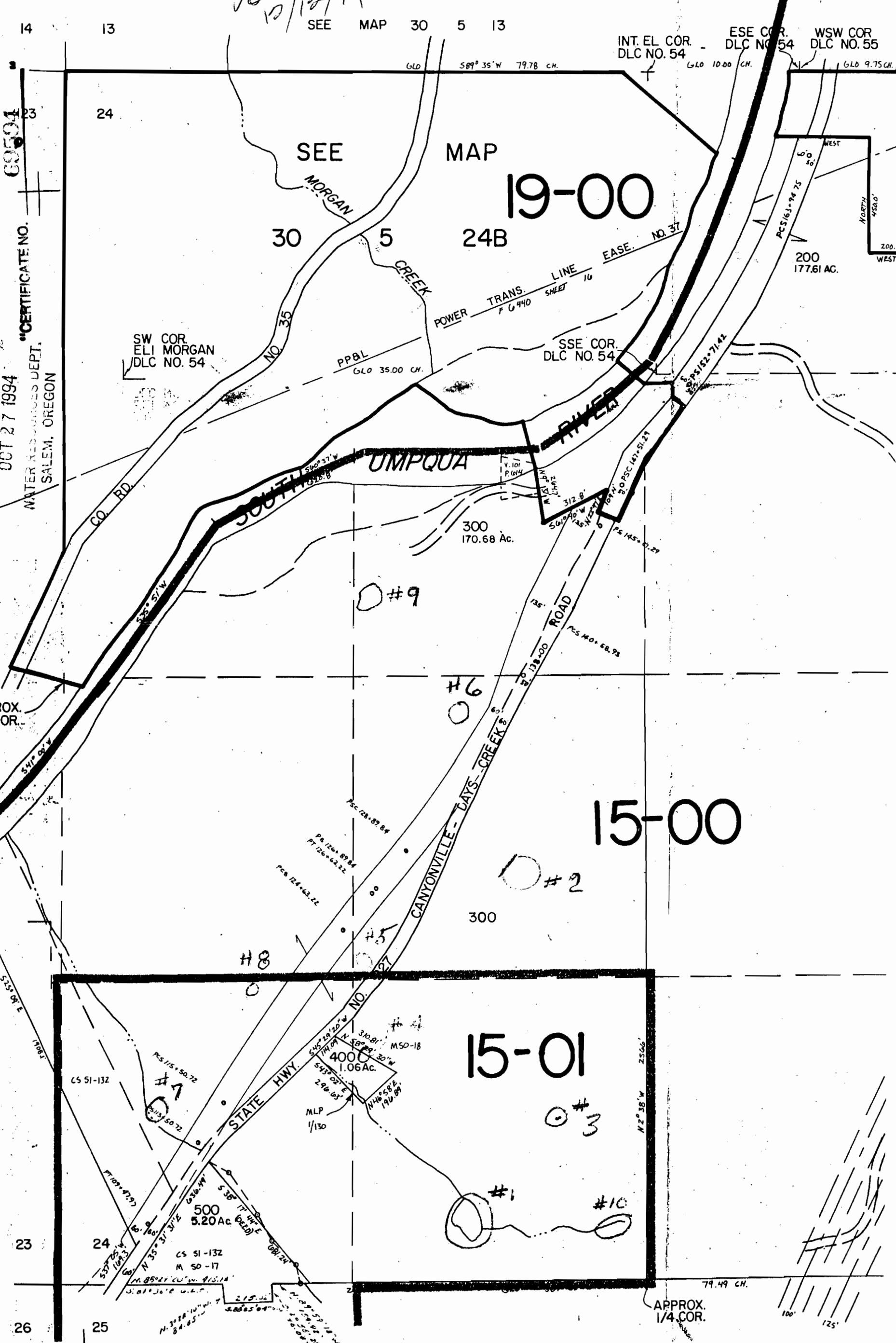
*Del To Watermaster
10/18/94*

Application No. 275476
Permit No.

CERTIFICATE NO. 69594
OCT 27 1994
WATER RESOURCES DEPT.
SALEM, OREGON

SEE MAP 30 5 23

SEE MAP 30 5 25



SEE MAP 30 5 25