

SECTION 35 T.27S. R.7W. W.M.
DOUGLAS COUNTY

REVISED ON
8-4-93

27 7 35
& INDEX

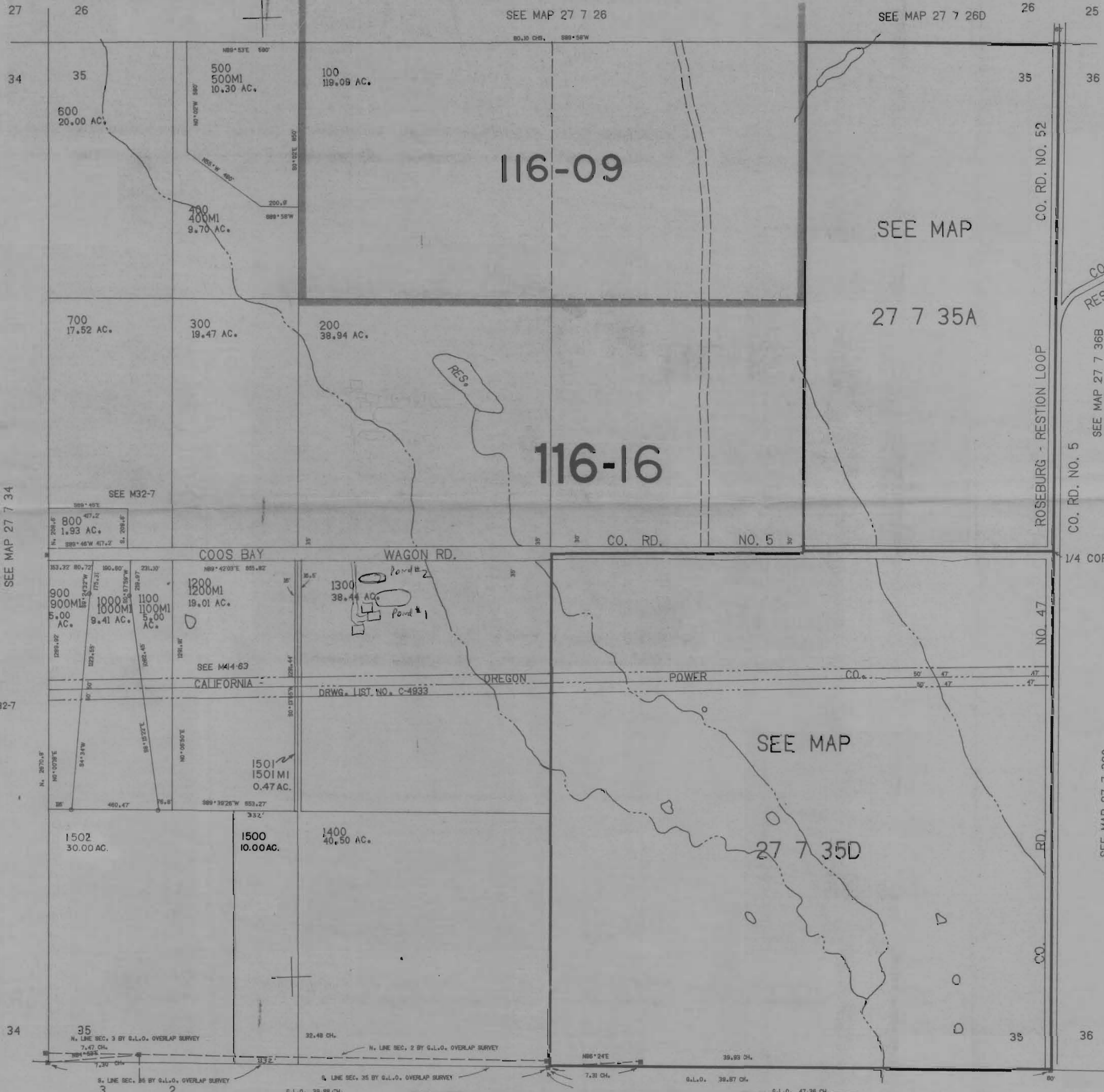
THIS MAP WAS PREPARED FOR
ASSESSMENT PURPOSE ONLY.

1"=400'

RECEIVED

DEC 15 1994

W.M. SALEM, OREGON



SEE MAP 27 7 34

SEE M32-7

CO. RD. NO. 5
RESTON LOOP

ROSEBURG - RESTON LOOP
CO. RD. NO. 52

CO. RD. NO. 5

SEE MAP 27 7 36B

SEE MAP 27 7 36C

1/4 COR.

"CERTIFICATE NO. 69596
Application R-75473
SEE MAP 28 7 2

R-75473

563.000
1.205.000
27 7 35
& INDEX