

Application No. R-73568
Permit No.

CERTIFICATE NO. 90628

RECEIVED
DEC 20 1994

WATER RESOURCES DEPT.
SALEM, OREGON

ROAD CLASSIFICATION
Unimproved dirt

IH12

PROMISE, OREG.
N4545—W11730/7.5

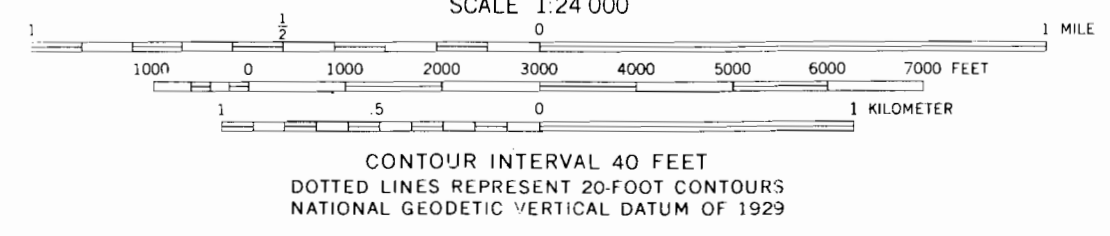
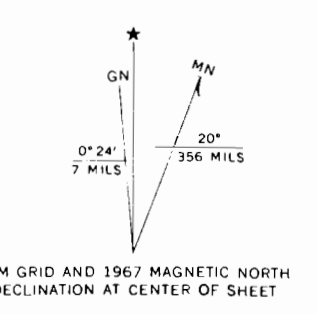
1967

DMA 2475 1 SE—SERIES V892

MASTER COPY

Please DO NOT remove from office

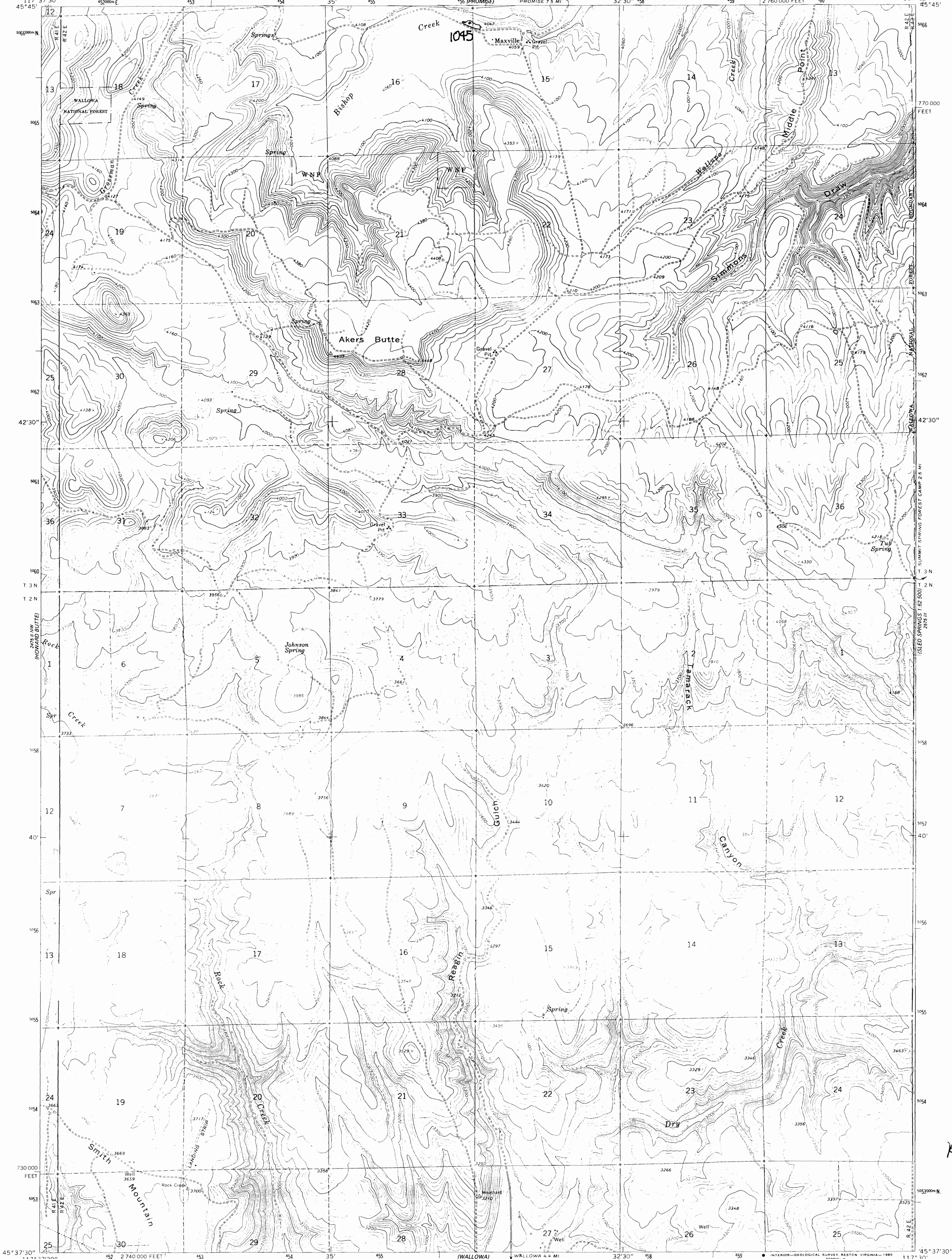
Mapped, edited, and published by the Geological Survey
Control by USGS and USC&GS
Topography by photogrammetric methods from aerial photographs taken 1966. Field checked 1967
Polyconic projection. 1927 North American datum 10,000-foot grid based on Oregon coordinate system, north zone
1000-meter Universal Transverse Mercator grid ticks, zone 11, shown in blue
To place on the predicted North American Datum 1983, move the projection lines 17 meters north and 80 meters east as shown by dashed corner ticks
Where omitted, land lines have not been established
There may be private inholdings within the boundaries of the National or State reservations shown on this map



THIS MAP COMPLIES WITH NATIONAL MAP ACCURACY STANDARDS
FOR SALE BY U. S. GEOLOGICAL SURVEY, DENVER, COLORADO 80225, OR RESTON, VIRGINIA 22092
A FOLDER DESCRIBING TOPOGRAPHIC MAPS AND SYMBOLS IS AVAILABLE ON REQUEST

APP# R-75568

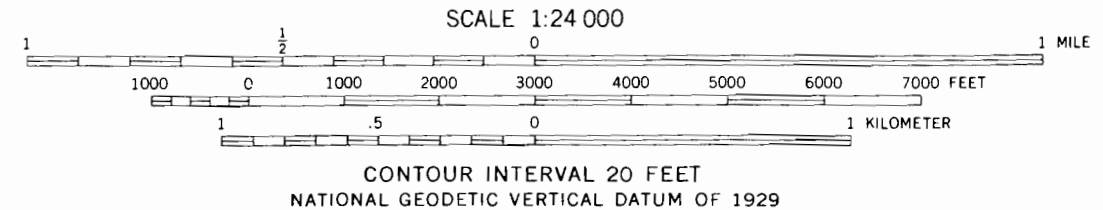
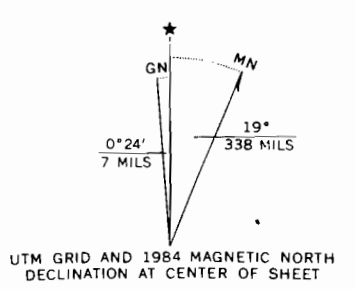
CERTIFICATE NO. 69628



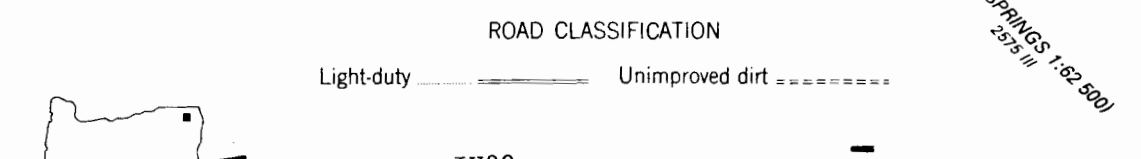
R-75568

Mapped, edited, and published by the Geological Survey
Control by USGS and NOS/NOAA

Topography by photogrammetric methods from aerial
photographs taken 1959. Field checked 1964
Cylindrical projection. 1927 North American datum
630,000-foot grid based on Oregon coordinate system,
19th zone
30-meter Universal Transverse Mercator grid ticks,
11, shown in blue
Place on the predicted North American Datum 1983
The projection lines 17 meters north and
17 meters east as shown by dashed corner ticks
Fine red dashed lines indicate selected fence lines
There may be private inholdings within the boundaries of
the National or State reservations shown on this map



CONTOUR INTERVAL 20 FEET
NATIONAL GEODETIC VERTICAL DATUM OF 1929



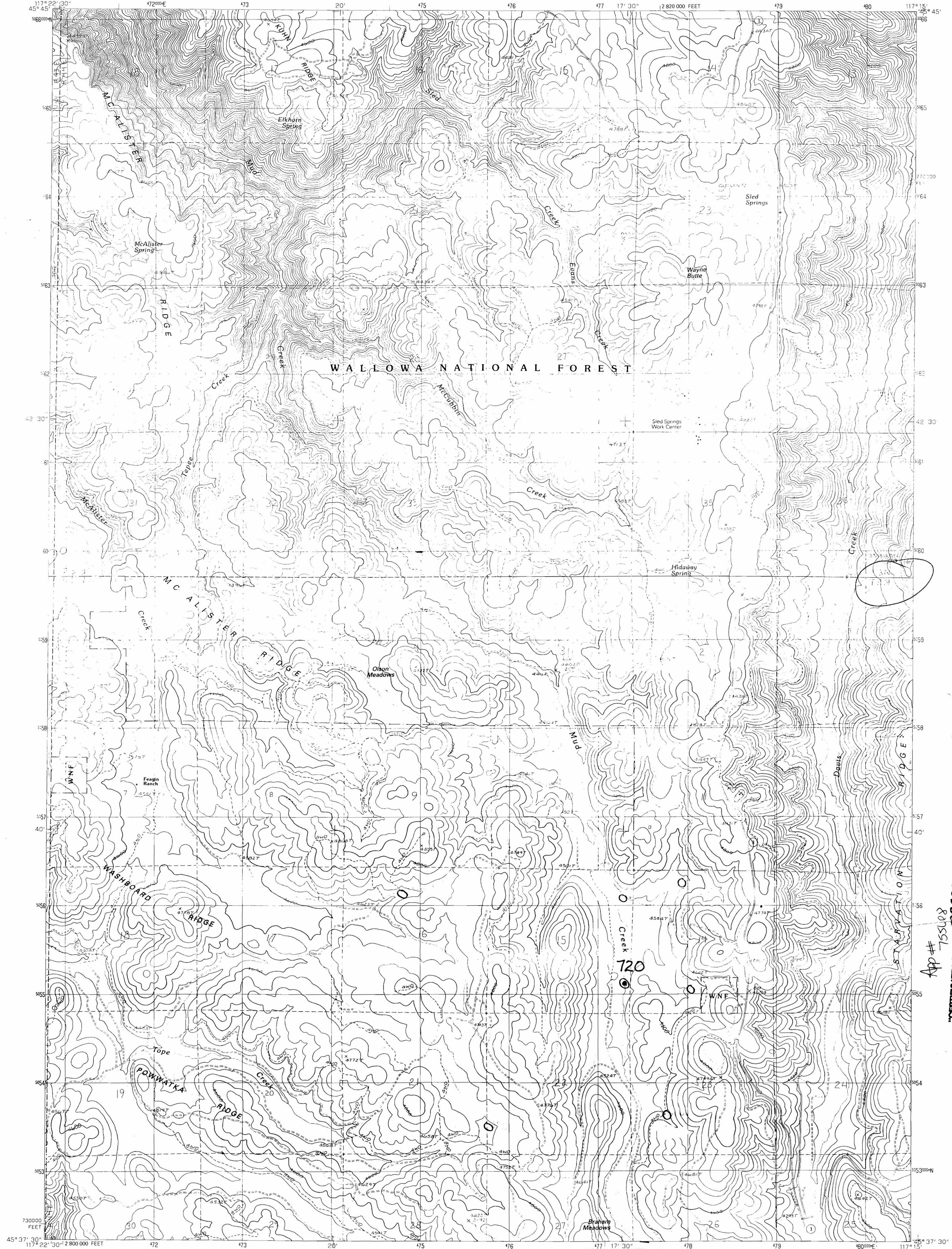
ROAD CLASSIFICATION
Light-duty Unimproved dirt
1H20
AKERS BUTTE, OREG.
45117-F5-TF-024

THIS MAP COMPLIES WITH NATIONAL MAP ACCURACY STANDARDS
FOR SALE BY U. S. GEOLOGICAL SURVEY, DENVER, COLORADO 80225, OR RESTON, VIRGINIA 22092
A FOLDER DESCRIBING TOPOGRAPHIC MAPS AND SYMBOLS IS AVAILABLE ON REQUEST

Revision shown in purple and woodland compiled from
aerial photographs taken 1981 and other sources
Partial field check by U. S. Forest Service. Map edited 1984

1964
PHOTOREVISED 1984
DMA 2475 II NE-SERIES V892

WATER RESOURCES DEPT.
SALEM, OREGON
DEC 20 1994



App # 755108
CERTIFICATE NO. 69628

PRODUCED BY THE UNITED STATES GEOLOGICAL SURVEY
CONTROL BY.....USGS AND NOS/NOAA
COMPILED FROM AERIAL PHOTOGRAPHS TAKEN.....1981
FIELD CHECKED.....1987. MAP EDITED.....1990
PROJECTION.....LAMBERT CONFORMAL CONIC
GRID: 1000-METER UNIVERSAL TRANSVERSE MERCATOR.....ZONE 11
10,000-FOOT STATE GRID TICKS.....OREGON, NORTH ZONE
UTM GRID DECLINATION.....0°13' WEST
1990 MAGNETIC NORTH DECLINATION.....17°30' EAST
VERTICAL DATUM.....NATIONAL GEODETIC VERTICAL DATUM OF 1929
HORIZONTAL DATUM.....1927 NORTH AMERICAN DATUM
To place on the predicted North American Datum of 1983,
move the projection lines as shown by dashed corner ticks
(17 meters north and 79 meters east)
There may be private inholdings within the boundaries of any
Federal or State reservations shown on this map
Where omitted, land lines have not been established

PROVISIONAL MAP
Produced from original
manuscript drawings. Infor-
mation shown as of date of
field check.

SCALE 1:24 000
1 0 1 2
1000 0 1000 2000 3000 4000 5000 6000 7000 8000 9000 10000
KILOMETERS
METERS
MILES
FEET
CONTOUR INTERVAL 40 FEET
To convert meters to feet multiply by 3.2808
To convert feet to meters multiply by 3048
THIS MAP COMPLIES WITH NATIONAL MAP ACCURACY STANDARDS
FOR SALE BY U.S. GEOLOGICAL SURVEY, DENVER, COLORADO 80225, OR RESTON, VIRGINIA 22092



ROAD LEGEND
Improved Road
Unimproved Road
Trail
Interstate Route U.S. Route State Route

1	2	3	1 Wood Butte
4	5	2 Shamrock Creek	3 Table Mountain
6	7	4 Sherod Meadows	5 Roberts Butte
		6 Evans	7 Hicks Springs
		8 Elk Mountain	

SLED SPRINGS, OREGON
PROVISIONAL EDITION 1990
45117-F3-TF-024

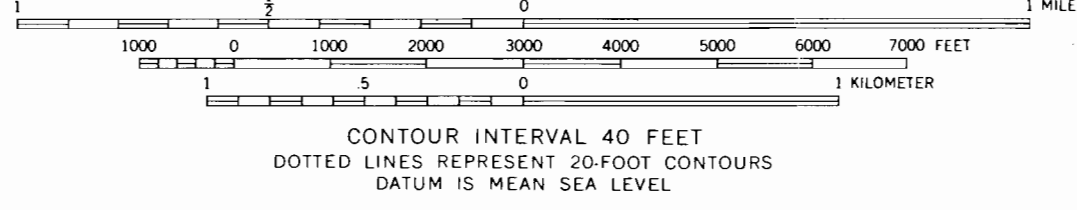
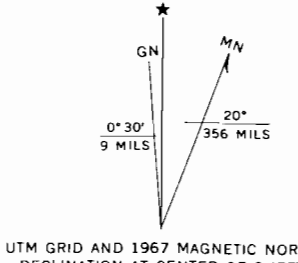
RECEIVED
DEC 20 1994
WATER RESOURCES DEPT.
SALEM, OREGON



CERTIFICATE NO. **69628**

R-75568

Mapped, edited, and published by the Geological Survey
Control by USGS and USC&GS
Topography by photogrammetric methods from aerial
photographs taken 1966. Field checked 1967
Polyconic projection. 1927 North American datum
10-foot grid based on Oregon coordinate system,
not shown
100-meter Universal Transverse Mercator grid ticks,
2000-foot intervals, shown in blue



ROAD CLASSIFICATION
Light duty ———— Unimproved dirt - - - - -

1H11
DEEP CREEK, OREG. 10
N4545-W11737.5/7.5

THIS MAP COMPLIES WITH NATIONAL MAP ACCURACY STANDARDS
FOR SALE BY U.S. GEOLOGICAL SURVEY, DENVER, COLORADO 80225, OR WASHINGTON, D.C. 20242
A FOLDER DESCRIBING TOPOGRAPHIC MAPS AND SYMBOLS IS AVAILABLE ON REQUEST

MASTER COPY

1967

Please DO NOT remove from file

RECEIVED
DEC 20 1994
WATER RESOURCES DEPT.
SALEM, OREGON

MS 2475 1 SW - SERIES V892