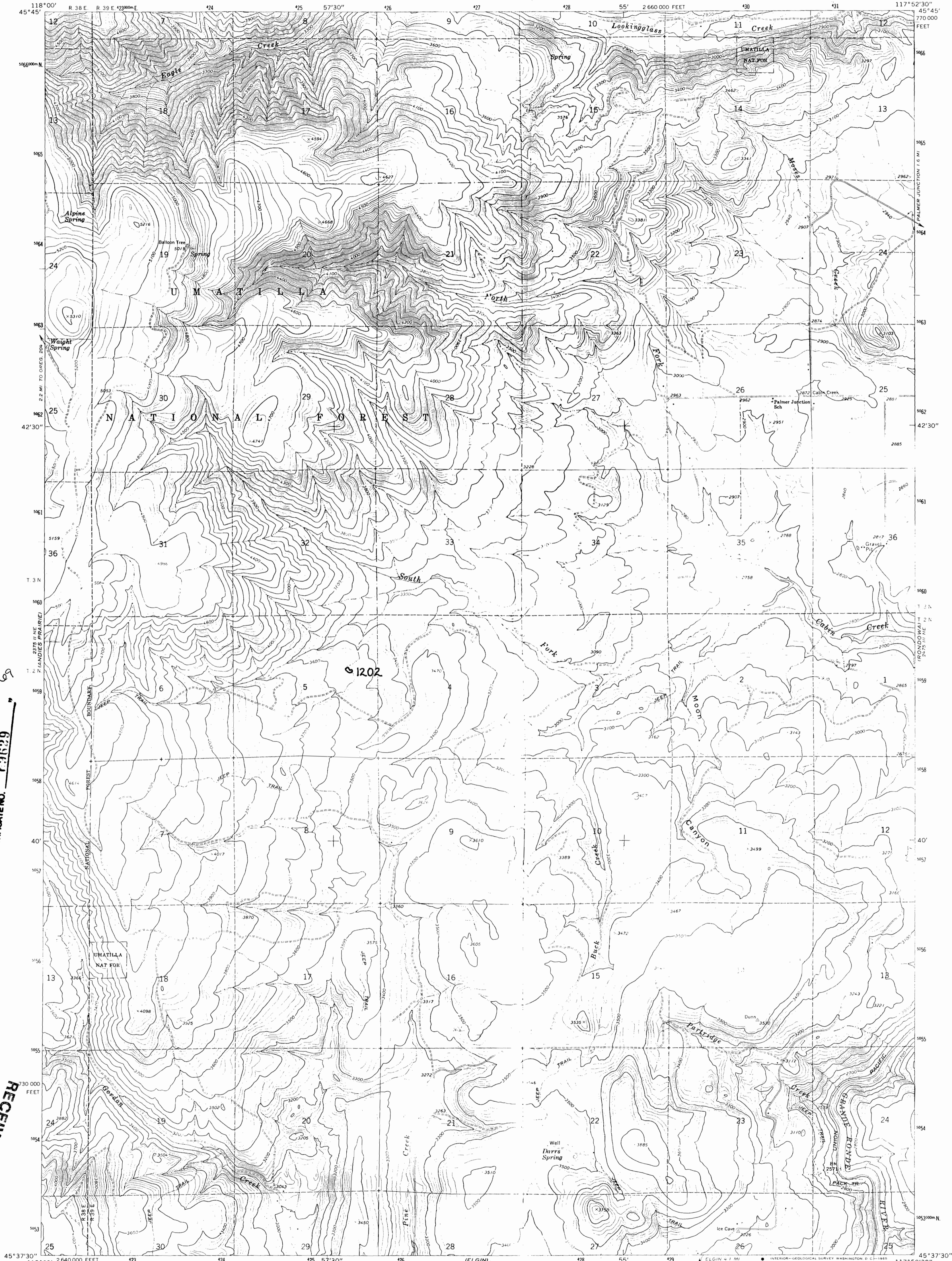


Application No. R-15569
Permit No. 4

(B)

UNITED STATES
DEPARTMENT OF THE INTERIOR
GEOLOGICAL SURVEY

PARTRIDGE CREEK QUADRANGLE
OREGON—UNION CO.
7.5 MINUTE SERIES (TOPOGRAPHIC)

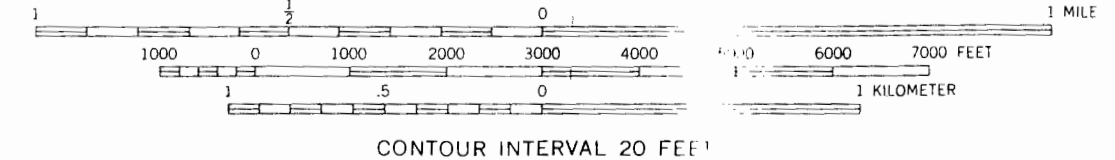
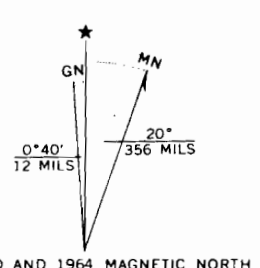


APP# R-15569

CERTIFICATE NO. 0929

RECEIVED
DEC 20 1984
WATER RESOURCES DEPT.
SALEM, OREGON

Mapped, edited, and published by the Geological Survey
Control by USGS and USC&GS
Topography by photogrammetric methods from aerial
photographs taken 1959. Field checked 1964
Polyconic projection. 1927 North American datum
10,000-foot grid based on Oregon coordinate system,
north zone
1000-meter Universal Transverse Mercator grid ticks,
zone 11, shown in blue
Where omitted, land lines have not been established
Fine red dashed lines indicate selected fence lines



CONTOUR INTERVAL 20 FEET
CONTOUR INTERVAL ON RIVER SURFACE 10 FEET
DATUM IS MEAN SEA LEVEL

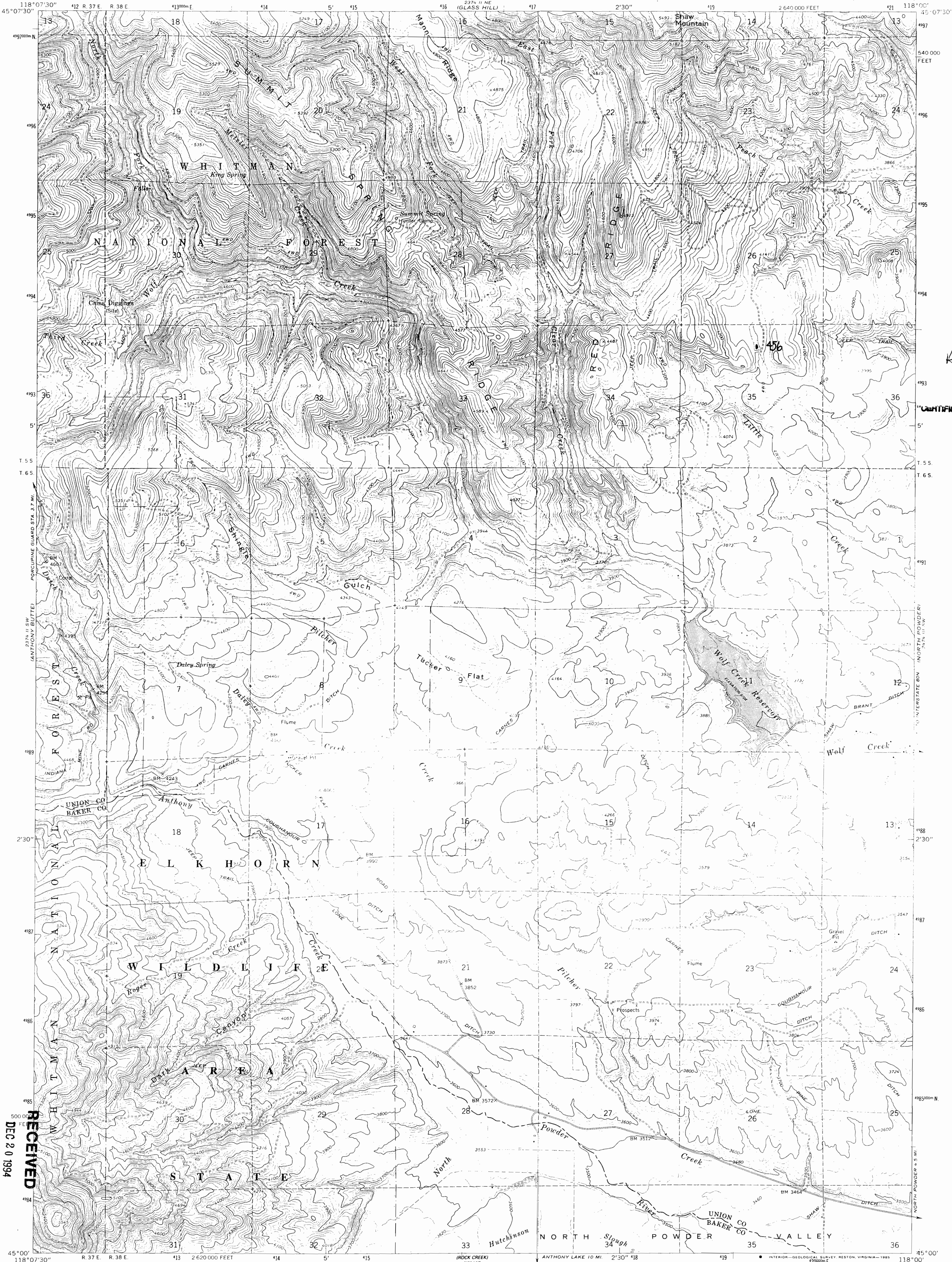


ROAD CLASSIFICATION
Light-duty ——— Unimproved dirt

PARTRIDGE CREEK, OREG.
N4537.5—W11752.5/7.5

THIS MAP COMPLIES WITH NATIONAL MAP ACCURACY STANDARDS
FOR SALE BY U.S. GEOLOGICAL SURVEY, DENVER, COLORADO 80225, OR WASHINGTON, D.C. 20242
A FOLDER DESCRIBING TOPOGRAPHIC MAPS AND SYMBOLS IS AVAILABLE ON REQUEST

1964
AMS 2475 III NW—SERIES V892



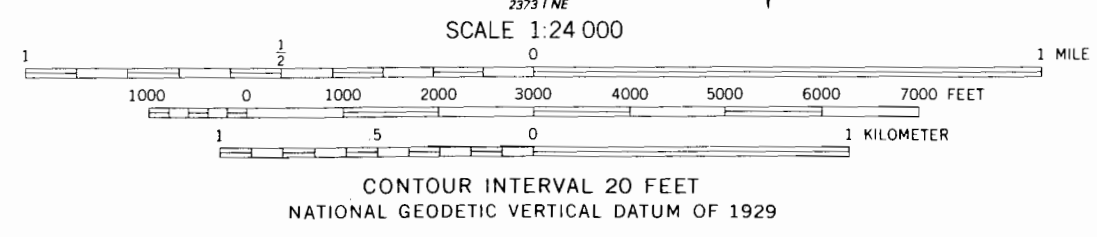
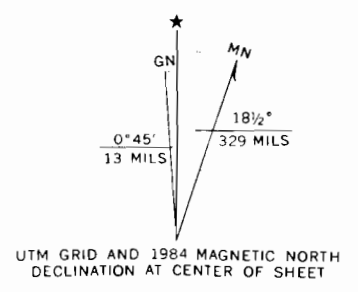
App#
R 15509

CERTIFICATE NO. **69629**

RECEIVED
DEC 20 1994
WATER RESOURCES DEPT.
SALEM, OREGON

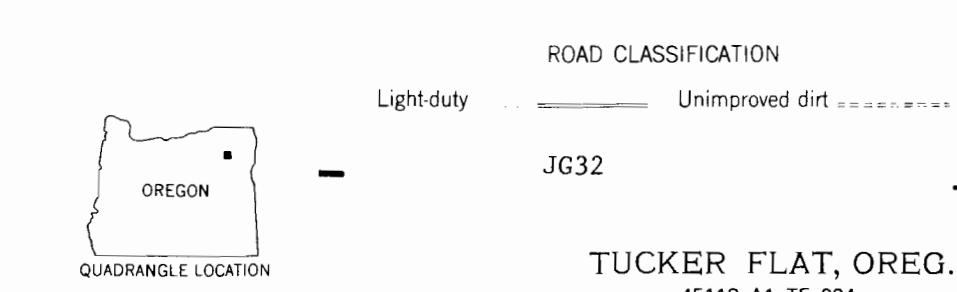
Mapped, edited, and published by the Geological Survey

Control by USGS and NOS/NOAA
Topography by photogrammetric methods from aerial photographs taken 1960. Field checked 1965
Polyconic projection. 1927 North American datum 10,000-foot grid based on Oregon coordinate system, north zone
1000-meter Universal Transverse Mercator grid ticks, zone 11, shown in blue
To place on the predicted North American Datum 1983 move the projection lines 17 meters north and 81 meters east as shown by dashed corner ticks
Fine red dashed lines indicate selected fence lines
There may be private inholdings within the boundaries of the National or State reservations shown on this map



CONTOUR INTERVAL 20 FEET
NATIONAL GEODETIC VERTICAL DATUM OF 1929

THIS MAP COMPLIES WITH NATIONAL MAP ACCURACY STANDARDS
FOR SALE BY U. S. GEOLOGICAL SURVEY, DENVER, COLORADO 80225, OR RESTON, VIRGINIA 22092
A FOLDER DESCRIBING TOPOGRAPHIC MAPS AND SYMBOLS IS AVAILABLE ON REQUEST



ROAD CLASSIFICATION
Light-duty ——— Unimproved dirt - - - - -
JG32

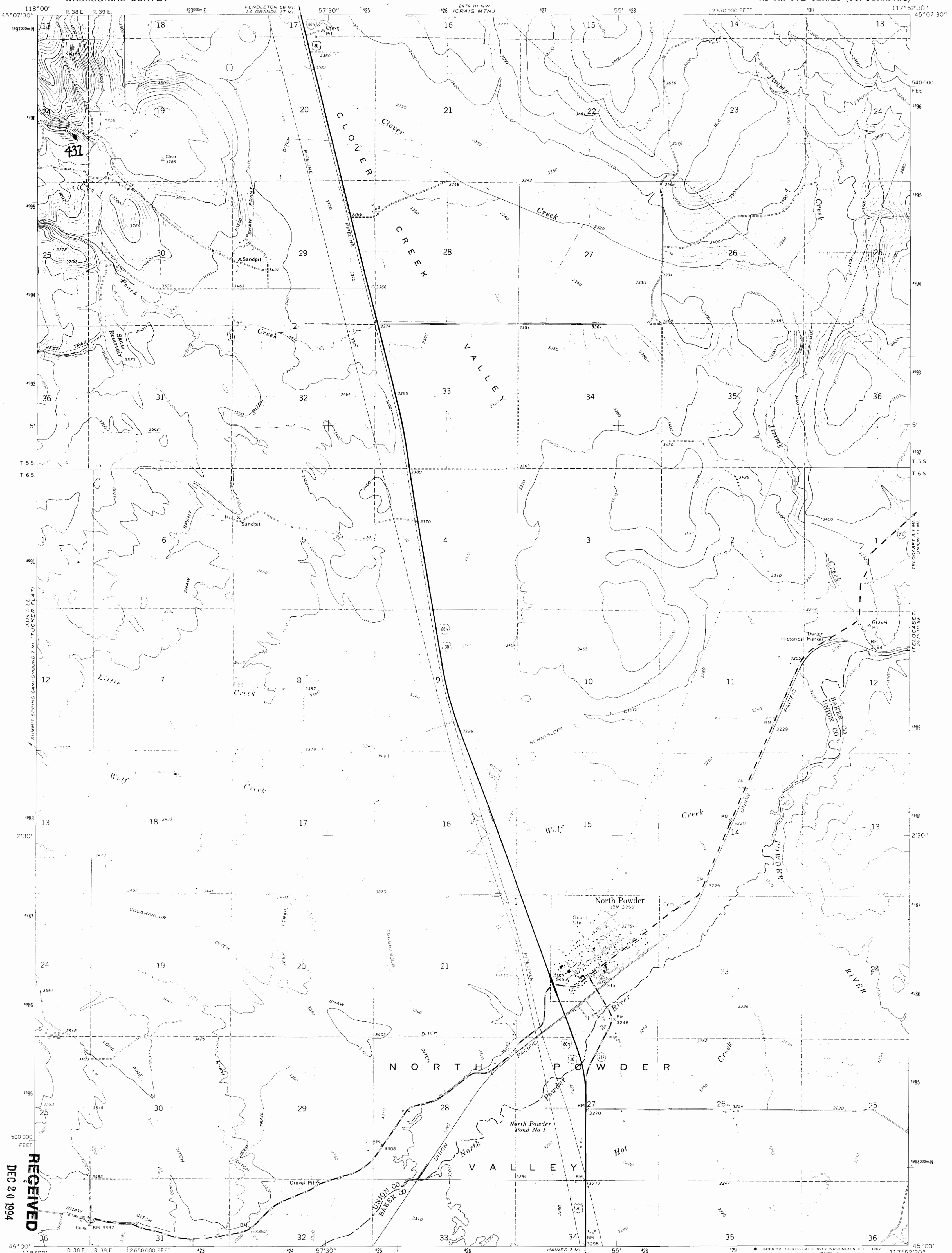
TUCKER FLAT, OREG. 53
45118-A1-TF-024
1965
PHOTOREVISED 1984
DMA 2374 II SE—SERIES V892

APP# R 75569

UNITED STATES
DEPARTMENT OF THE INTERIOR
GEOLOGICAL SURVEY

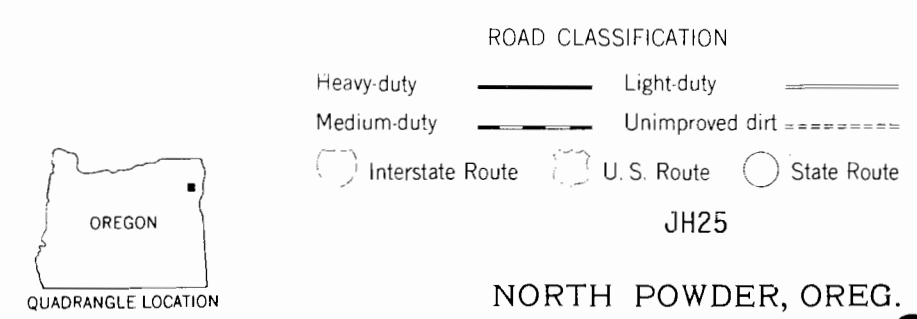
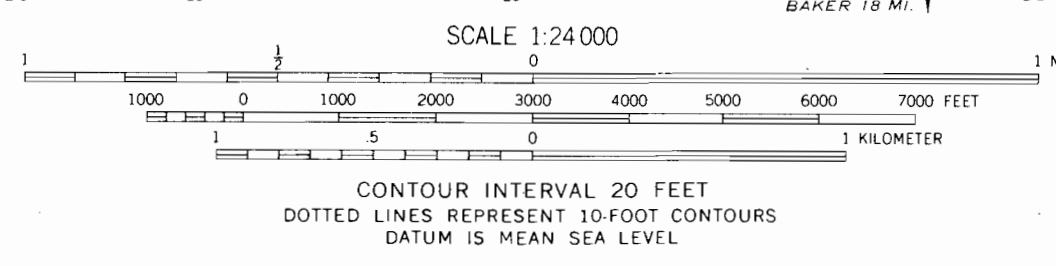
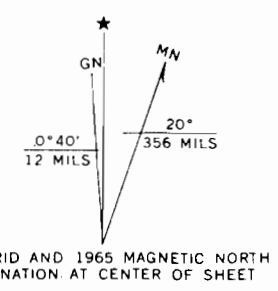
CERTIFICATE NO. 69629

NORTH POWDER QUADRANGLE
OREGON
7.5 MINUTE SERIES (TOPOGRAPHIC)



RECEIVED
DEC 20 1994
WATER RESOURCES DEPT.
SALEM, OREGON

Mapped, edited, and published by the Geological Survey
Control by USGS and USC&GS
Topography by photogrammetric methods from aerial
photographs taken 1963. Field checked 1965
Polyconic projection. 1927 North American datum
10,000-foot grid based on Oregon coordinate system,
north zone
1000-meter Universal Transverse Mercator grid ticks,
zone 11, shown in blue
Fine red dashed lines indicate selected fence lines



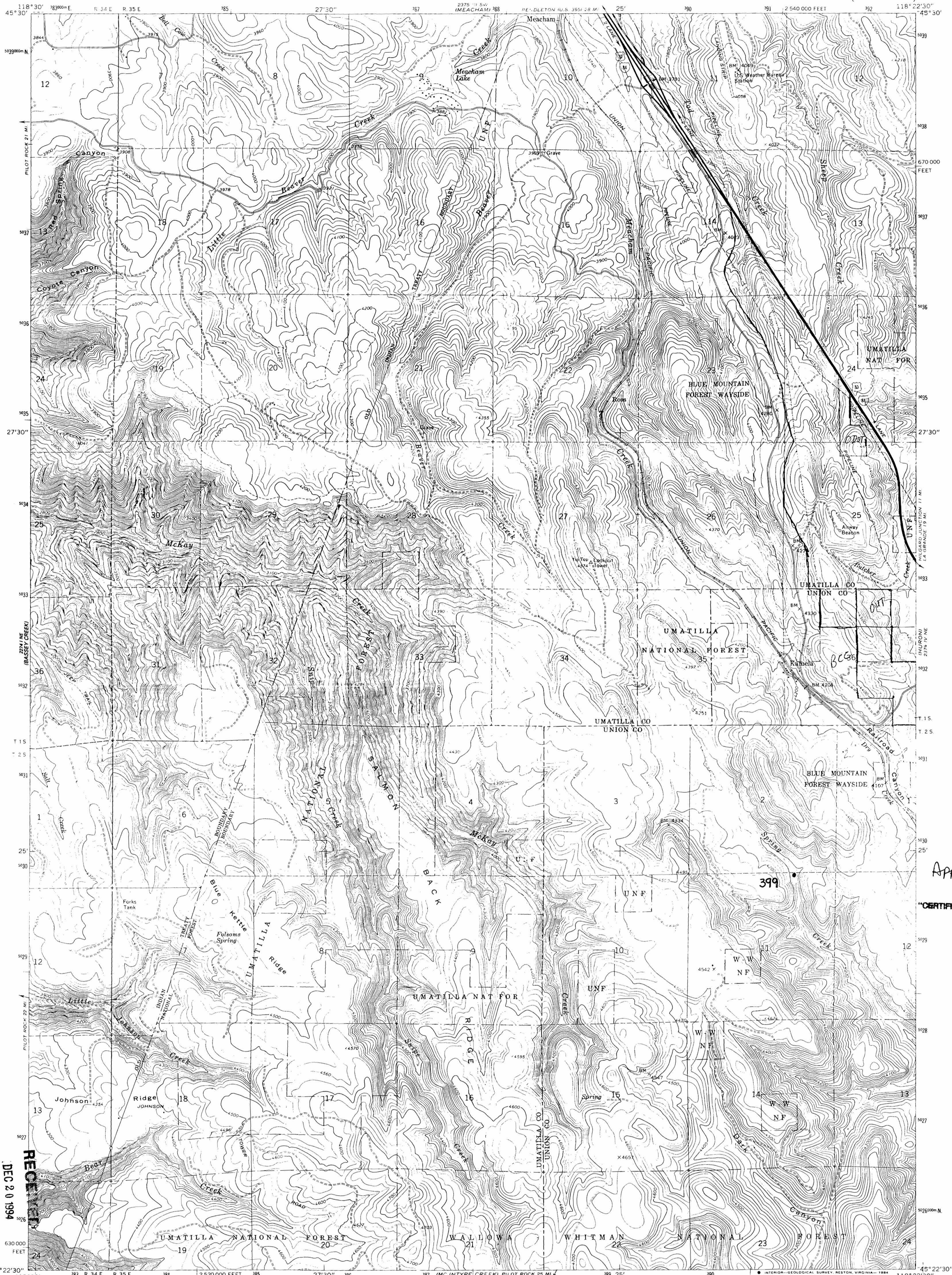
THIS MAP COMPLIES WITH NATIONAL MAP ACCURACY STANDARDS
FOR SALE BY U.S. GEOLOGICAL SURVEY, DENVER, COLORADO 80225, OR WASHINGTON, D.C. 20242
A FOLDER DESCRIBING TOPOGRAPHIC MAPS AND SYMBOLS IS AVAILABLE ON REQUEST

MASTER COPY
Please DO NOT remove from office

NORTH POWDER, OREG.
N4500—W11752.5/7.5
1965
AMS 2474 III SW—SERIES V892

UNITED STATES
DEPARTMENT OF THE INTERIOR
GEOLOGICAL SURVEY

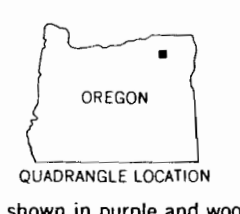
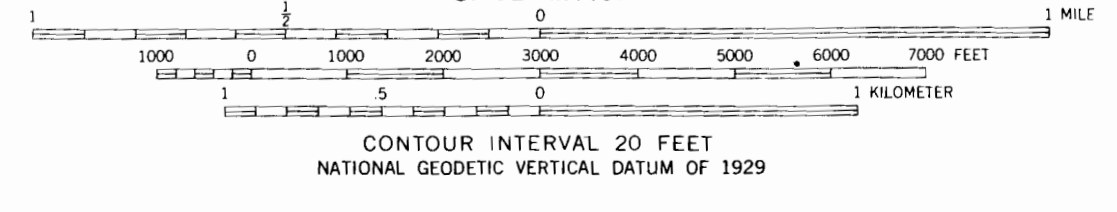
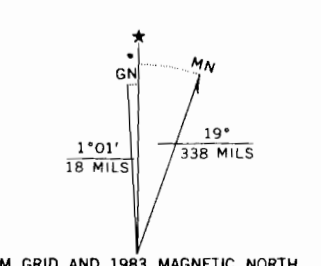
MEACHAM LAKE QUADRANGLE
OREGON
7.5 MINUTE SERIES (TOPOGRAPHIC)



App. # R 75509
CERTIFICATE NO. 02629

RECEIVED
DEC 20 1994
WATER RESOURCES DIV.
SALEM, OREGON

Mapped, edited, and published by the Geological Survey
Control by USGS and NOS/NOAA
Topography by photogrammetric methods from aerial photographs taken 1957. Field checked 1963
Polyconic projection. 1927 North American Datum
10,000-foot grid based on Oregon coordinate system, north zone
1000-meter Universal Transverse Mercator grid ticks, zone 11, shown in blue
To place on the predicted North American Datum 1983 move the projection lines 18 meters north and 82 meters east as shown by dashed corner ticks
There may be private inholdings within the boundaries of the National or State reservations shown on this map



ROAD CLASSIFICATION	
Heavy duty	Light duty
Unimproved dirt	Interstate Route
	U.S. Route
	JG05

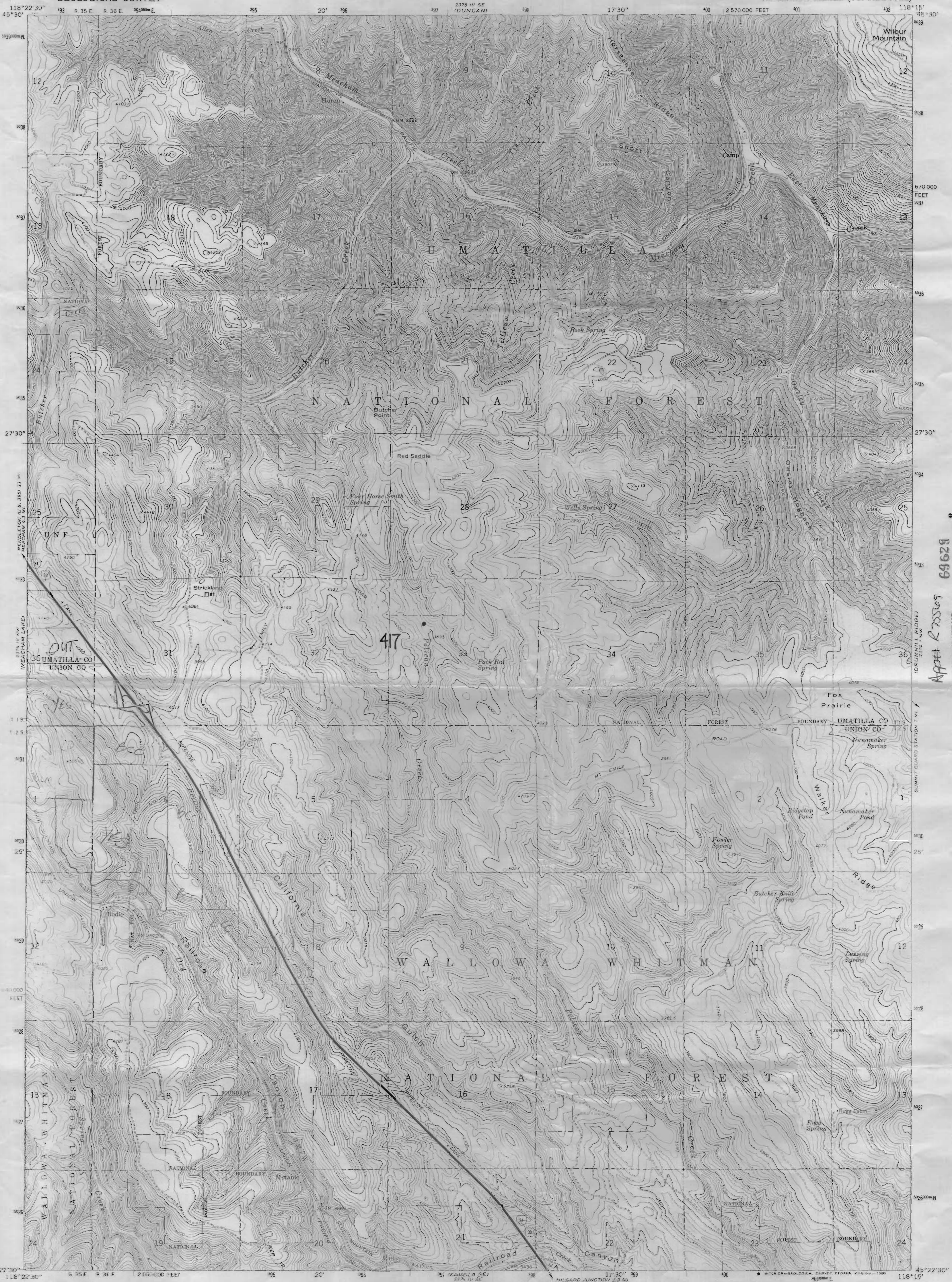
MEACHAM LAKE, OREG.
45118-D4-TF-024
1963
PHOTOREVISED 1983
DMA 2374 IV NW—SERIES V892

THIS MAP COMPLIES WITH NATIONAL MAP ACCURACY STANDARDS
FOR SALE BY U. S. GEOLOGICAL SURVEY, DENVER, COLORADO 80225, OR RESTON, VIRGINIA 22092
A FOLDER DESCRIBING TOPOGRAPHIC MAPS AND SYMBOLS IS AVAILABLE ON REQUEST

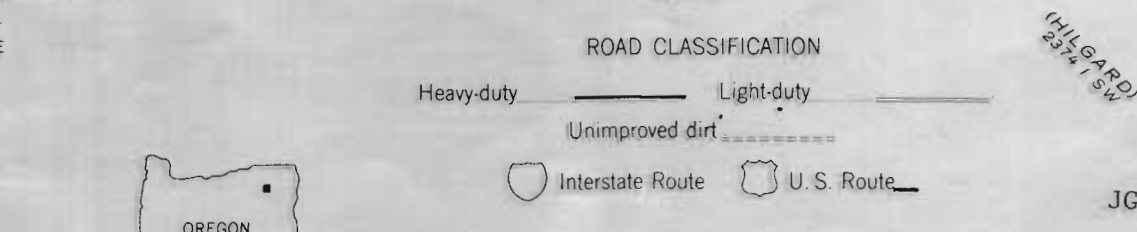
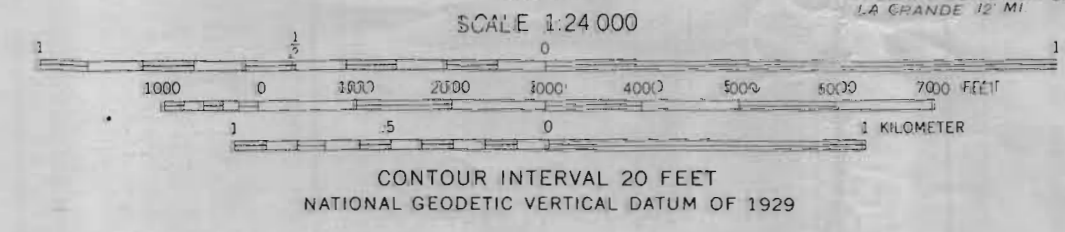
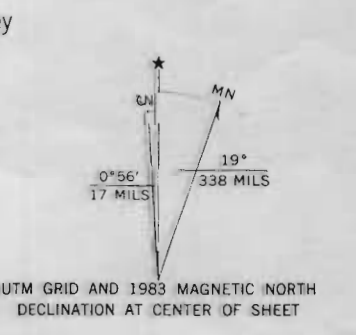
Revisions shown in purple and woodland compiled from aerial photographs taken 1981 and other source data
Partial field check by U. S. Forest Service. Map edited 1983

WAMELA SE
224 224 224 224

J 505



Mapped, edited, and published by the Geological Survey
Copyright © USGS and NOS/NOAA
Topography by photogrammetric methods from aerial photographs taken 1957. Field checked 1964
Geographic Projection: 1927 North American Datum
3000-foot grid based on Oregon coordinate system, with zone 12
1:000-meter Universal Transverse Mercator grid ticks, zone 12, shown in blue
To place on the projected North American Datum 1983 move the projection lines 18 meters north and 82 meters east as shown by dashed corner ticks
There may be private inholdings within the boundaries of the National or State reservations shown on this map



THIS MAP COMPLIES WITH NATIONAL MAP ACCURACY STANDARDS
FOR SALE BY U. S. GEOLOGICAL SURVEY, DENVER, COLORADO 80225, OR RESTON, VIRGINIA 22092
A FOLDER DESCRIBING TOPOGRAPHIC MAPS AND SYMBOLS IS AVAILABLE ON REQUEST

Revisions shown in purple and woodland compiled from aerial photographs taken 1981 and other source data
Partial field check by U. S. Forest Service. Map edited 1983

HURON, OREG. 24
45118-D3-TF-024
1964
PHOTOREVISED 1983
DMA 2374 IV NE-SERIES V892

App# R 25569
69628
CERTIFICATE NO.

JG06

J606