

SW1/4 SEC.2 T.28S. R.7W. W.M.  
DOUGLAS COUNTY

28 7 20

THIS MAP WAS PREPARED FOR  
ASSESSMENT PURPOSE ONLY.

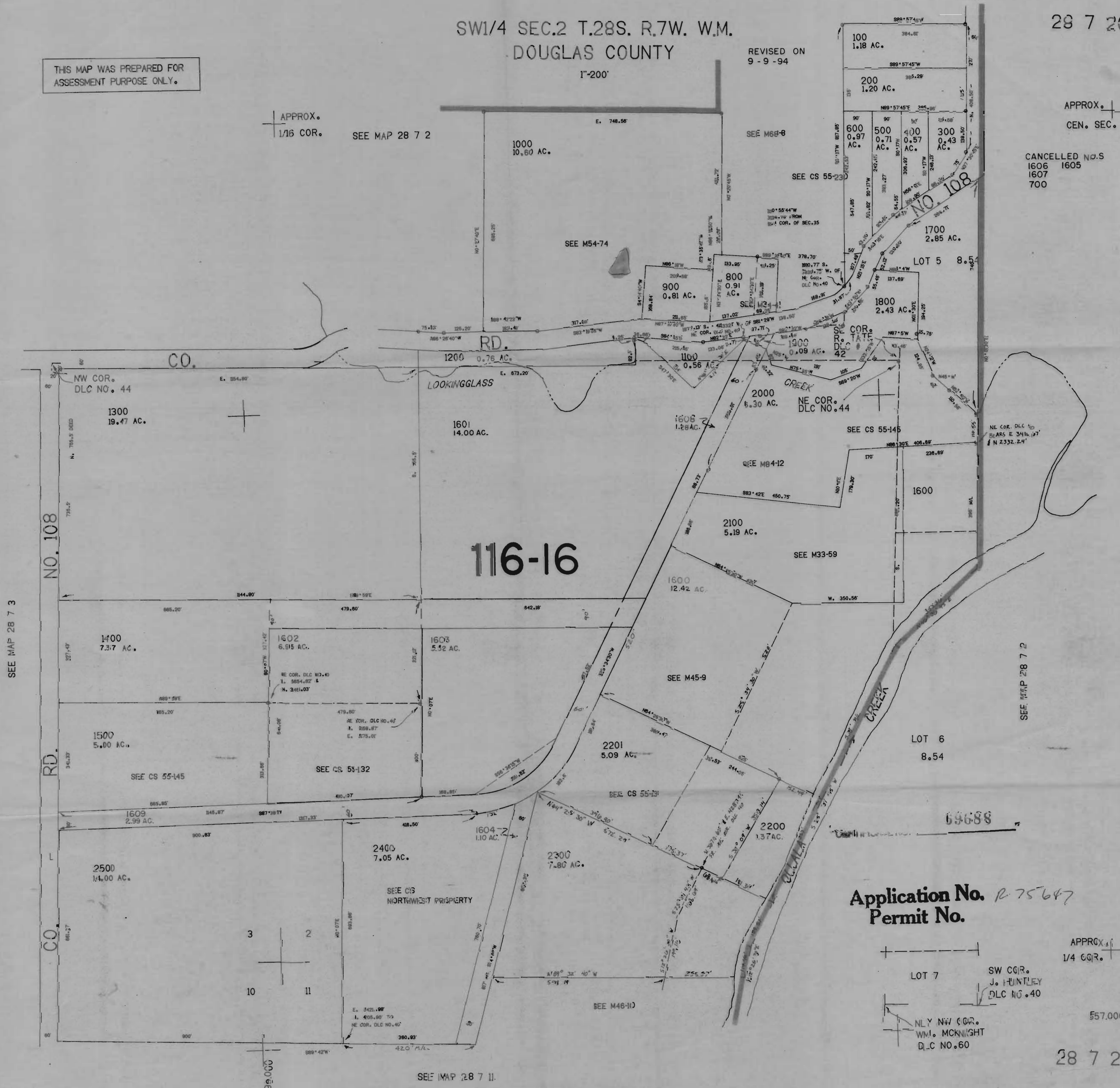
REVISED ON  
9-9-94

1"=200'

APPROX.  
1/16 COR. SEE MAP 28 7 2

APPROX.  
CEN. SEC.

CANCELLED NO.S  
1606 1605  
1607  
700



116-16

Application No. R 75647  
Permit No.

APPROX. 1/4 COR.

LOT 7 SW COR. J. HUNTLEY DLC NO. 40

NLY NW COR. WM. MCKNIGHT DLC NO. 60

557.000

SEE MAP 28 7 11

28 7 20