

DEC 19 1994

HB 2153

R75665

SEE MAP 3

69701

WATER RESOURCES DEPT.
SALEM, OREGON

15

14

CERTIFICATE NO.

79.58 = 6 (2631.7') 2632.90'

22

23

SEE MAP

C.S. 57-71

C.S. 57-71

36 7 23-21

MADAME

See Survey
C.S. 158-62

900

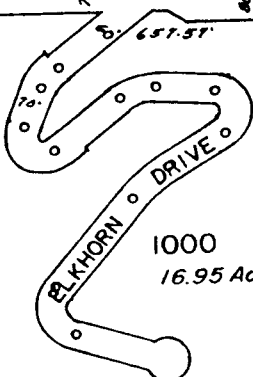
901

11.85 Ac.

POND

C.S. 92-75

220-72



ELKHORN DRIVE

1000
16.95 Ac.

C.S. 22-67

C.S. 220-72

1101

17.14 Ac.

C.S. 31-76

1103

2.64 Ac.

1102

18.83 Ac.

1200

15.20 Ac.

5

1100

24.30 Ac.

N 89° 54' W
589.96'

DEERHORN DRIVE

583° 48' E

1377.06'

2000

80.00 Ac.

1207

29.85

1900

15.00 Ac.

36-07-23



THIS SKETCH IS FOR LOCATION PURPOSES
ONLY AND NO LIABILITY IS ASSUMED FOR
ANY VARIATIONS DETERMINED BY SURVEY
JOSEPHINE COUNTY TITLE

C.S. 12-69

Application No. 75665
Permit No.

KEN