

SECTION 12 T.28S. R.5W. W.M.  
DOUGLAS COUNTY

28 5 12

THIS MAP WAS PREPARED FOR  
ASSESSMENT PURPOSE ONLY.

1"=400'

Application No. R-75672  
Permit No.

REVISED ON  
4-9-92

RECEIVED  
DEC 8 1994

WATER RESOURCES DEPT.  
SALEM, OREGON

SEE MAP 28 5 1

CERTIFICATE NO. 69708

1 6

12 7

SEE MAP 28 4 7

PARCEL 1001

- 1. S 25° 18' 17" W - 132.43'
- 2. R - 335.78'
- 3. A - 35.03'
- 4. N 39° 47' E - 30.09'
- 5. N 67° 45' E - 64.10'
- 6. N 53° 02' E - 91.55'

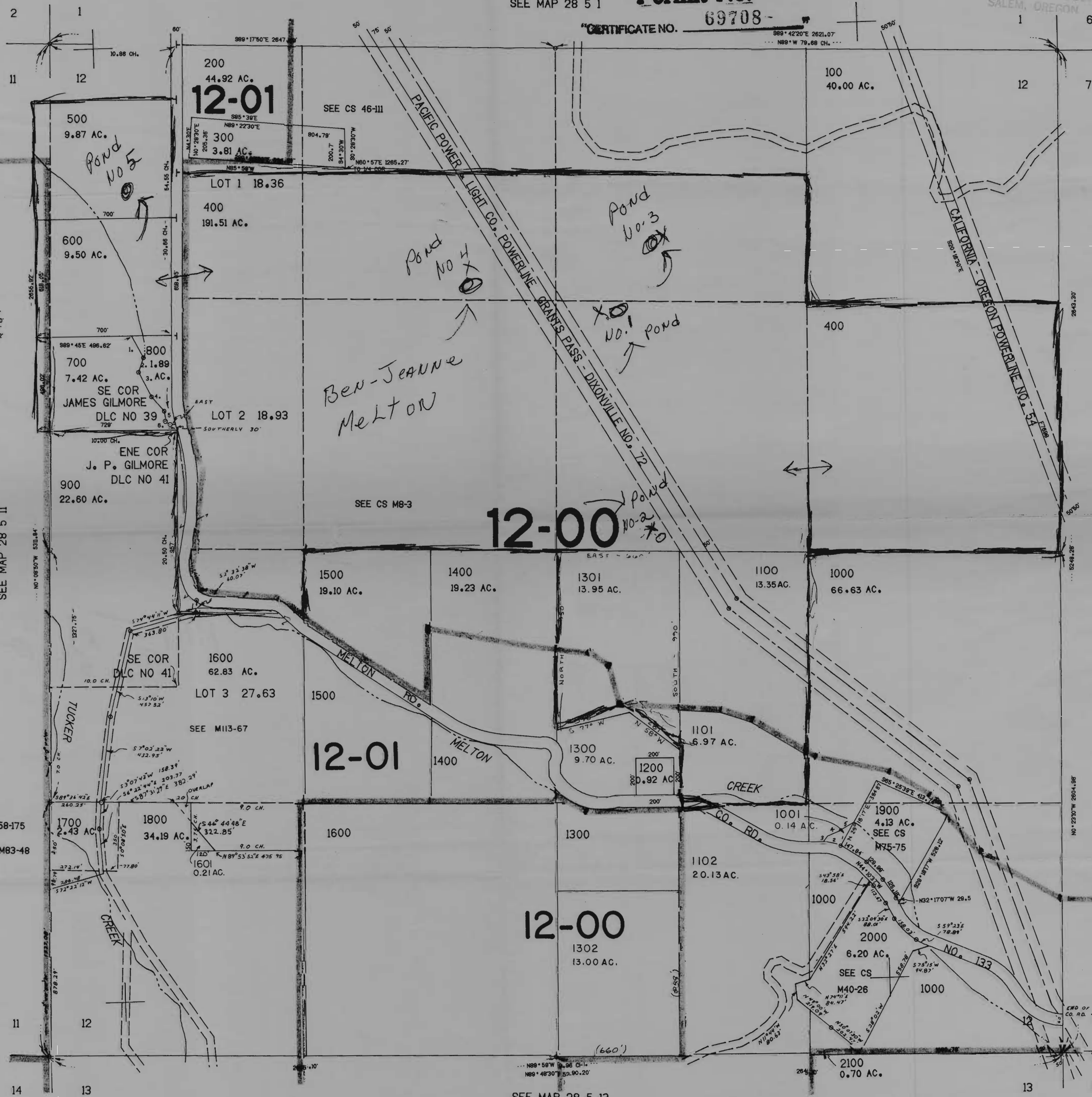
550,000

RECEIVED  
DEC 19 1994

WATER RESOURCES DEPT.  
SALEM, OREGON

28 5 12

1,273,000



SEE MAP 28 5 11

SEE MAP 28 5 13