

Application No. R-75540  
Permit No.

CERTIFICATE NO. 69717

MILE 30  
WALLONIA

RIVER

STOCK PONDS

Parsnip

Creek

Pond 11

Pond 10

CORNER 3329

SPRING

SPRING

SPRING

SPRING

SPRING

x35547

x35637

37667 x

33687 x

3665 x

36587

36887

STOCK POND

WATER RESOURCES  
SALEM, OREGON

x39017

STOCK POND

3705 T

x35757

33357

16

15

14

21

22

23

27

26

28

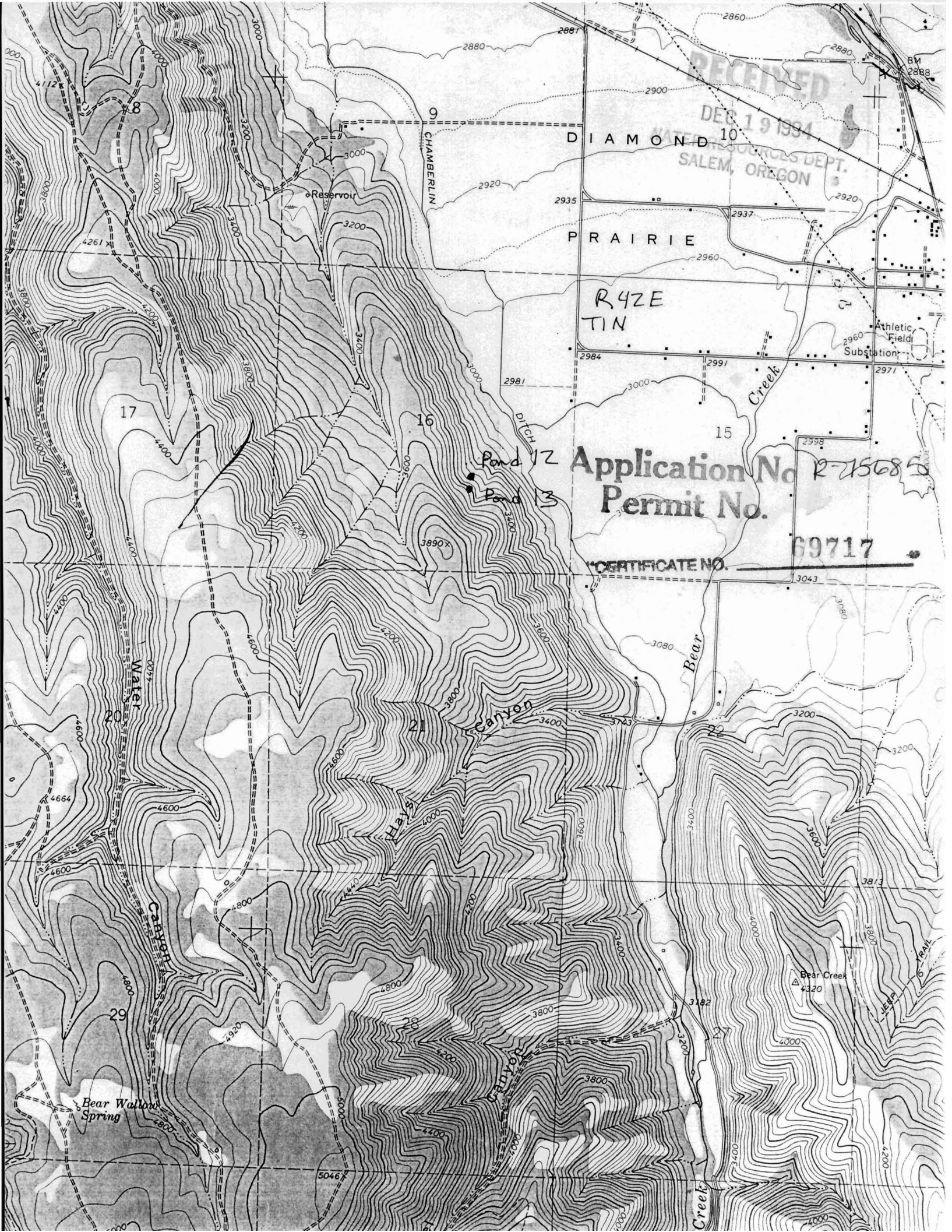
33

P

P

UNDS

UNDS



RECEIVED  
DEC 19 1994  
WATER RESOURCES DEPT.  
SALEM, OREGON

DIAMOND 10

PRAIRIE

R4ZE  
TIN

Application No R-215685  
Permit No.

CERTIFICATE NO. 69717  
3043

CHAMBERLIN

Creek

Bear

Canyon

Hays

Creek

Bear Wallon  
Spring

Bear Creek  
4320

BM  
2888

17

16

15

21

22

29

28

27

8

9

10

Reservoir

Pond 12

Pond 13

DITCH

Athletic  
Field  
Substation

4600

4800

4920

5046

5000

4400

4200

4200

4000

3800

3200

3000

3800

3200

3000

3800

3200

3000

3800

3200

3000

3800

3200

3000

3800

3200

3000

3800

3200

3000

3800

3200

3000

3800

3200

3000

3800

3200

3000

3800

3200

3000

3800

3200

3000

3800

3200

3000

3800

3200

3000

3800

3200

3000

3800

3200

3000

3800

3200

3000

3800

3200

3000

3800

3200

3000

3800

3200

3000

3800

3200

3000

3800

3200

3000

3800

3200

3000

3800

3200

3000

3800

3200

3000

3800

3200

3000

3800

3200

3000

3800

3200

3000

3800

3200

3000

3800

3200

3000

3800

3200

3000

3800

3200

3000

3800

3200

3000