

SE 1/4 SEC 25 T.BS. R.3W. WM  
MARION COUNTY, OREGON

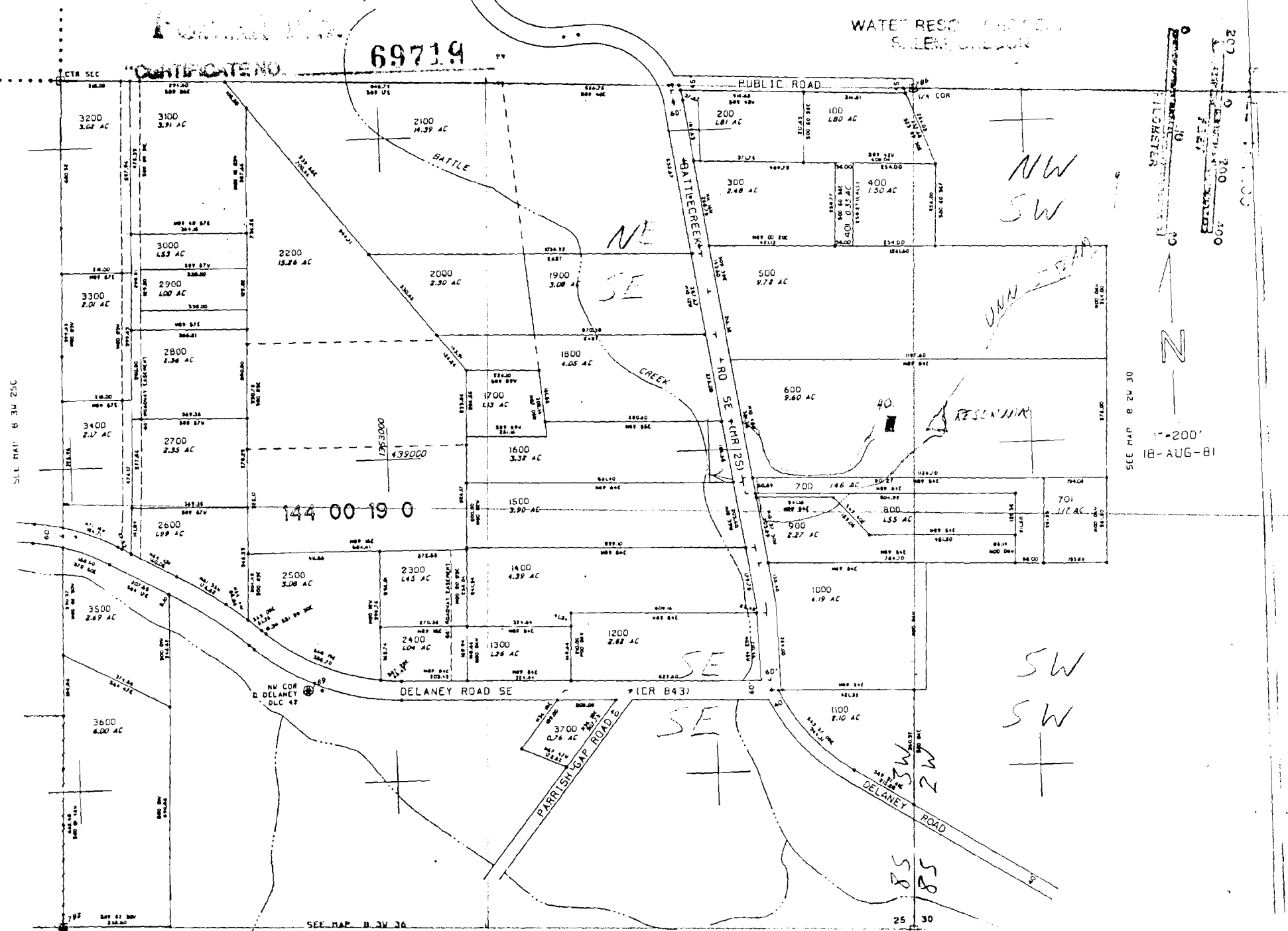
RECEIVED

DEC 22 1994

B 3W 25U

69719  
MAP 8 3W 25A

WATER RES. DIST. NO. 1  
S. LEWIS, OREGON



SEE MAP 8 3W 30  
1"=200'  
18-AUG-81

352 NE 9 JAN 75

SEE MAP 8 3W 36