

69731

Application No. R-75905

Permit No.

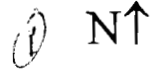
Weyerhaeuser Company  
Willamette Timberlands

Water Storage Site Map

RECEIVED

DEC 20 1994

WATER RESOURCES DEPT.  
SALEM, OREGON



Map Scale: 1" = 1000 feet

Section 6

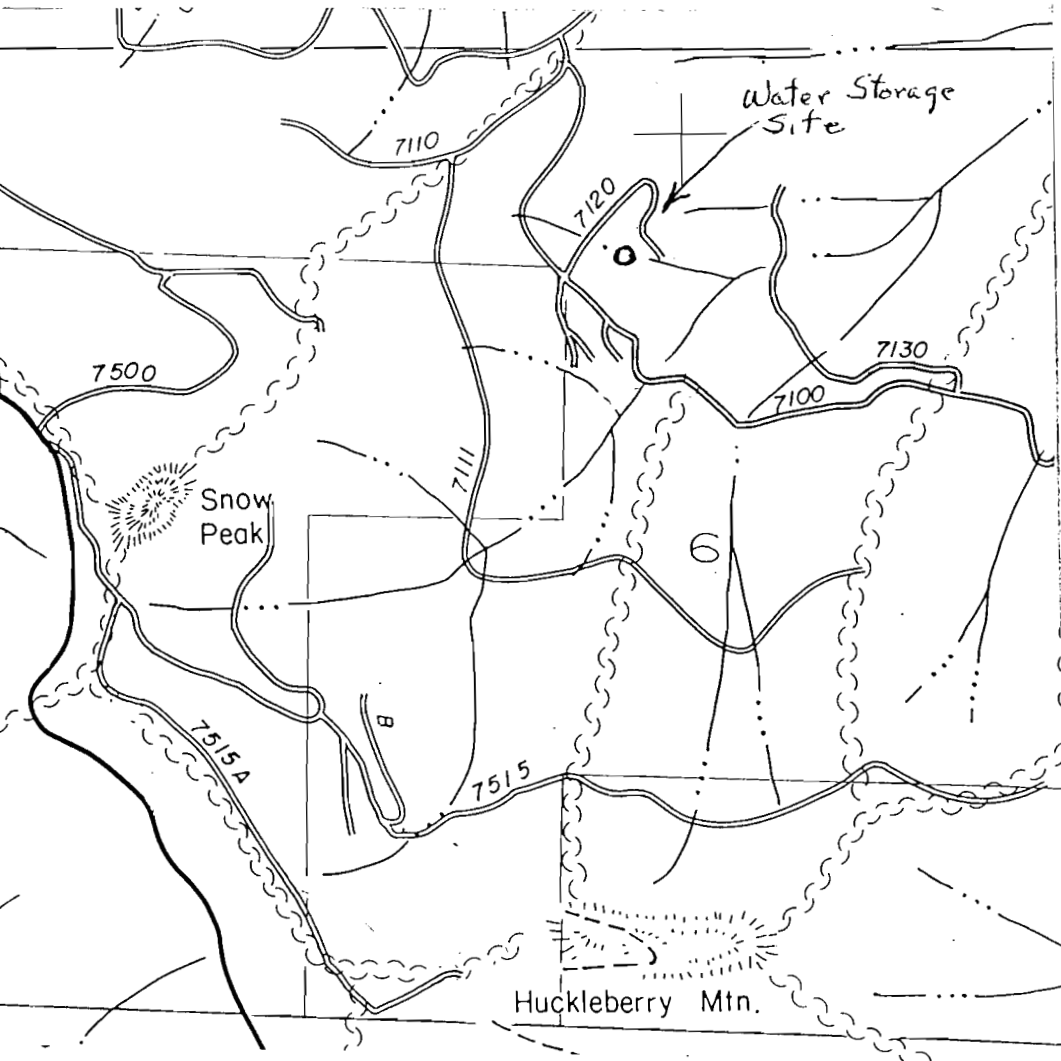
Township 24S

Range 1W

Forty NE 1/4, NW 1/4

River Basin Coast Fork

Willamette



Gallons of Water Stored: 600,000

Purpose of Impounded Water:

1. Emergency Fire Suppression
2. pump chance for herbicide application water source

09731

Application No. R-75705  
Permit No.

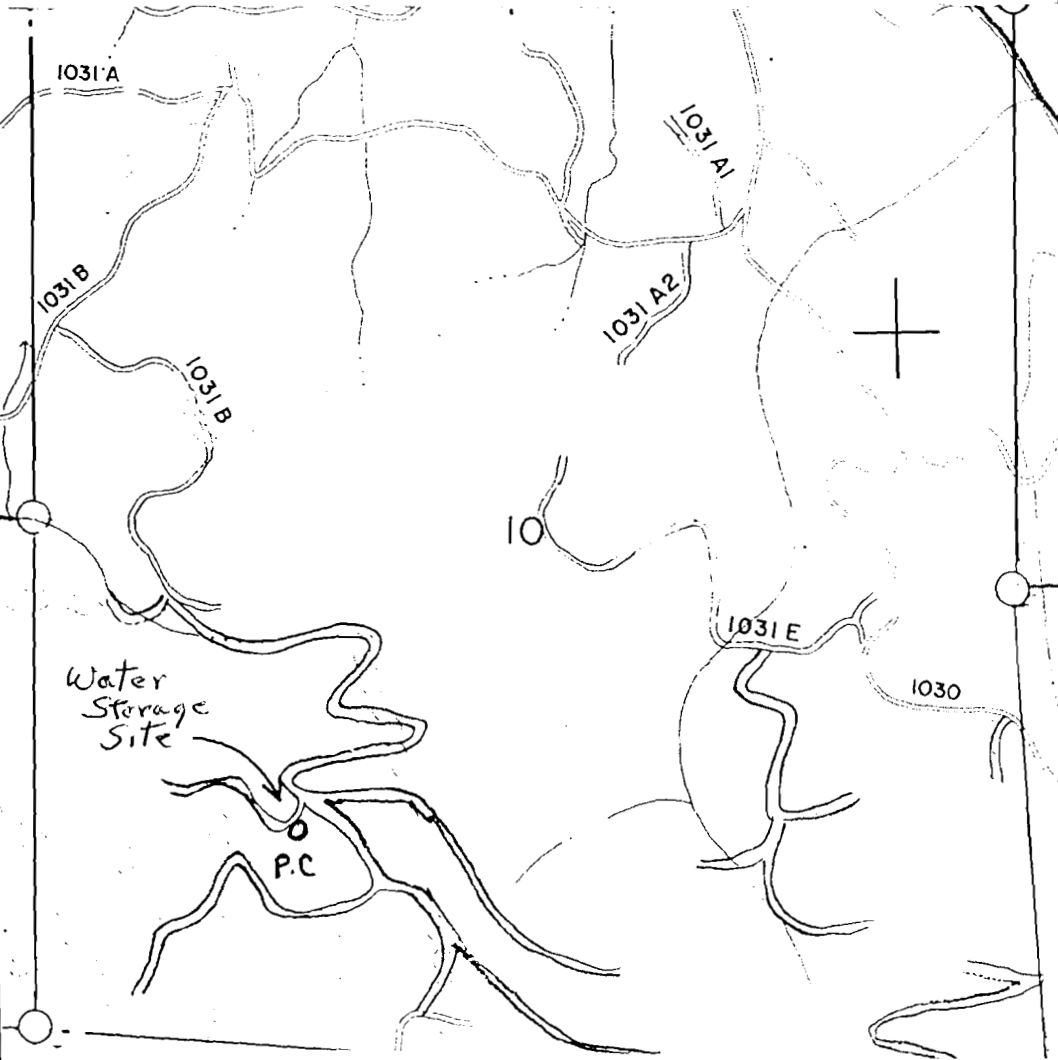
Weyerhaeuser Company  
Willamette Timberlands

RECEIVED

DEC 2 1994

WATER RESOURCES DEPT.  
SALEM, OREGON

Water Storage Site Map



2 NT

Map Scale: 1" = 1000 feet

Section 10

Township 23S

Range 3W

Forty SE 1/4, SW 1/4

River Basin Coast Fork

Willamette

Gallons of Water Stored: 60,000

Purpose of Impounded Water:

1. Emergency Fire Suppression
2. pump chance for herbicide application

09731

Application No. R-7590  
Permit No.

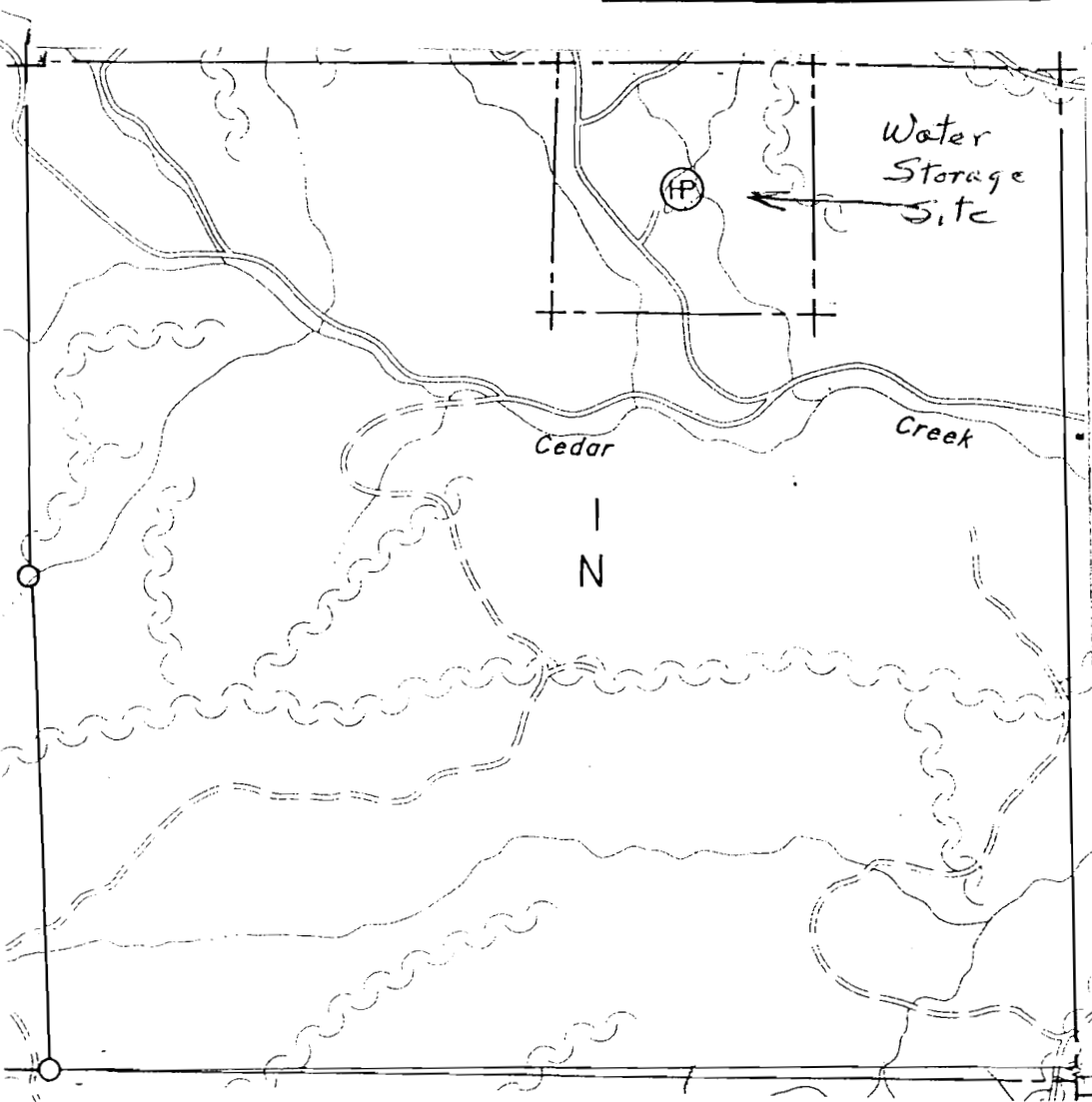
Weyerhaeuser Company  
Willamette Timberlands

RECEIVED

DEC 20 1994

Water Storage Site Map

WATER RESOURCES DEPT.  
SALEM, OREGON



3 N↑

Map Scale: 1" = 1000 feet

Section 1

Township 22S

Range 4W

Forty NW 1/4, NE 1/4

River Basin Coast Fork

Willamette

Gallons of Water Stored: 500,000

Purpose of Impounded Water:

1. Emergency Fire Suppression

2.

Application No R-75705

09731

Permit No.

Weyerhaeuser Company  
Willamette Timberlands

Water Storage Site Map

4 N↑

Map Scale: 1" = 1000 feet

Section 16

Township 22S

Range 3W

Forty NW¼, SW¼

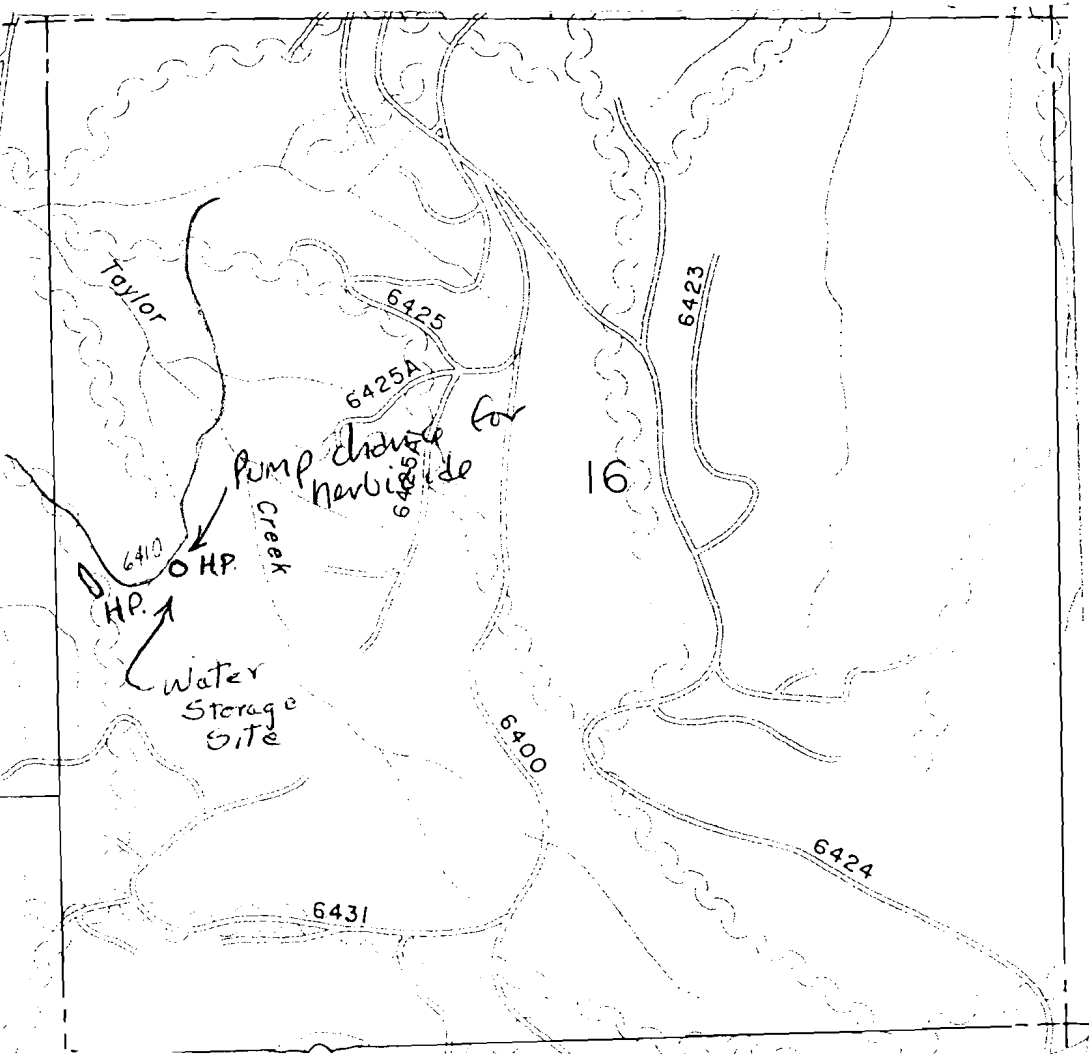
River Basin Coast Fork

Willamette

**RECEIVED**

DEC 20 1994

WATER RESOURCES DEPT.  
SALEM, OREGON



Gallons of Water Stored: 5000

Purpose of Impounded Water:

1. Emergency Fire Suppression
2. pump change for water for herbicide application

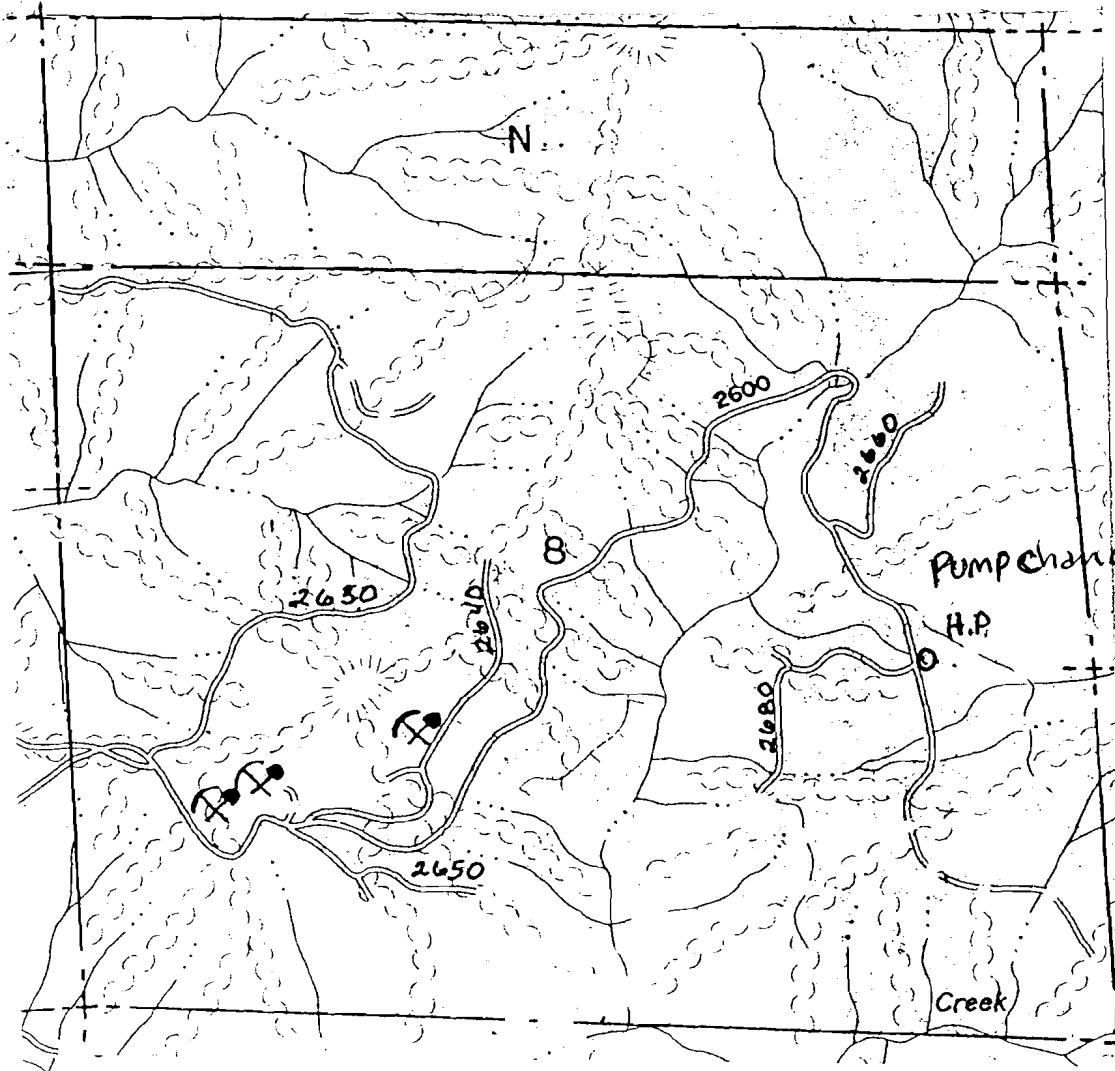
09731

Application No.  
Permit No.

R-75705

Weyerhaeuser Company  
Willamette Timberlands

Water Storage Site Map



9 N↑

Map Scale: 1" = 1000 feet

Section 8

Township 23S

Range 1W

Forty NE 1/4, SE 1/4

River Basin Coast Fork

Willamette

**RECEIVED**

DEC 20 1994

WATER RESOURCES DIVISION  
SALEM, OREGON

Gallons of Water Stored: 10,000

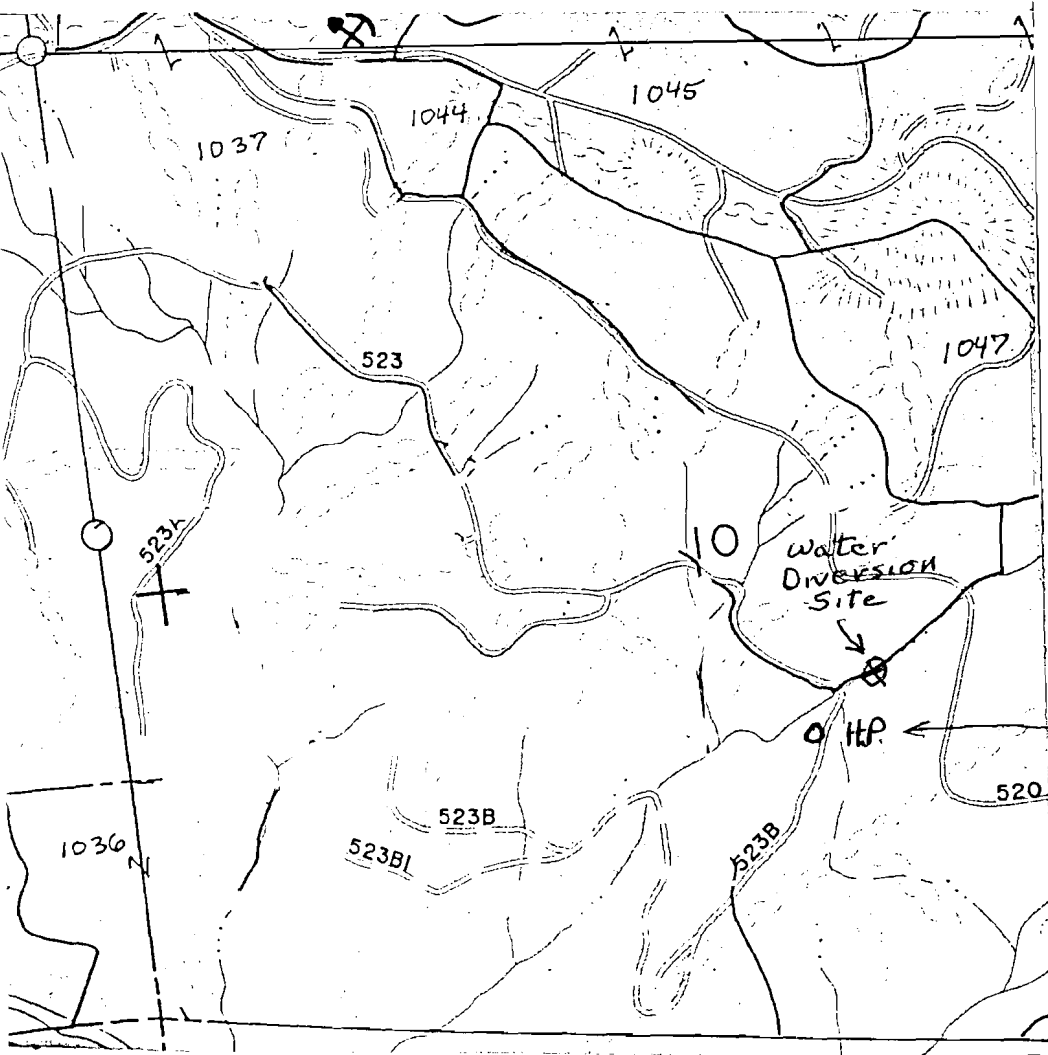
Purpose of Impounded Water:

1. Emergency Fire Suppression
2. pump chance for herbicide application on occasion.

Application No R-75405  
Permit No.

09731 Weyerhaeuser Company  
Willamette Timberlands

Water Storage Site Map



6 N↑

Map Scale: 1" = 1000 feet

Section 10

Township 22S

Range 1W

Forty NW 1/4 SE 1/4

River Basin Coast Fork  
Willamette

← Water Storage Site

**RECEIVED**

DEC 20 1994

WATER DIVISION  
SALEM, OREGON

Gallons of Water Stored: 10,000

Purpose of Impounded Water:

1. Emergency Fire Suppression
- 2.

Application No. R-15905

Permit No.

Weyerhaeuser Company  
Willamette Timberlands

CS731

RECEIVED

DEC 2 1994

Water Storage Site Map

WATER DIVISION  
SALEM, OREGON

1 N ↑

Map Scale: 1" = 1000 feet

Section 2

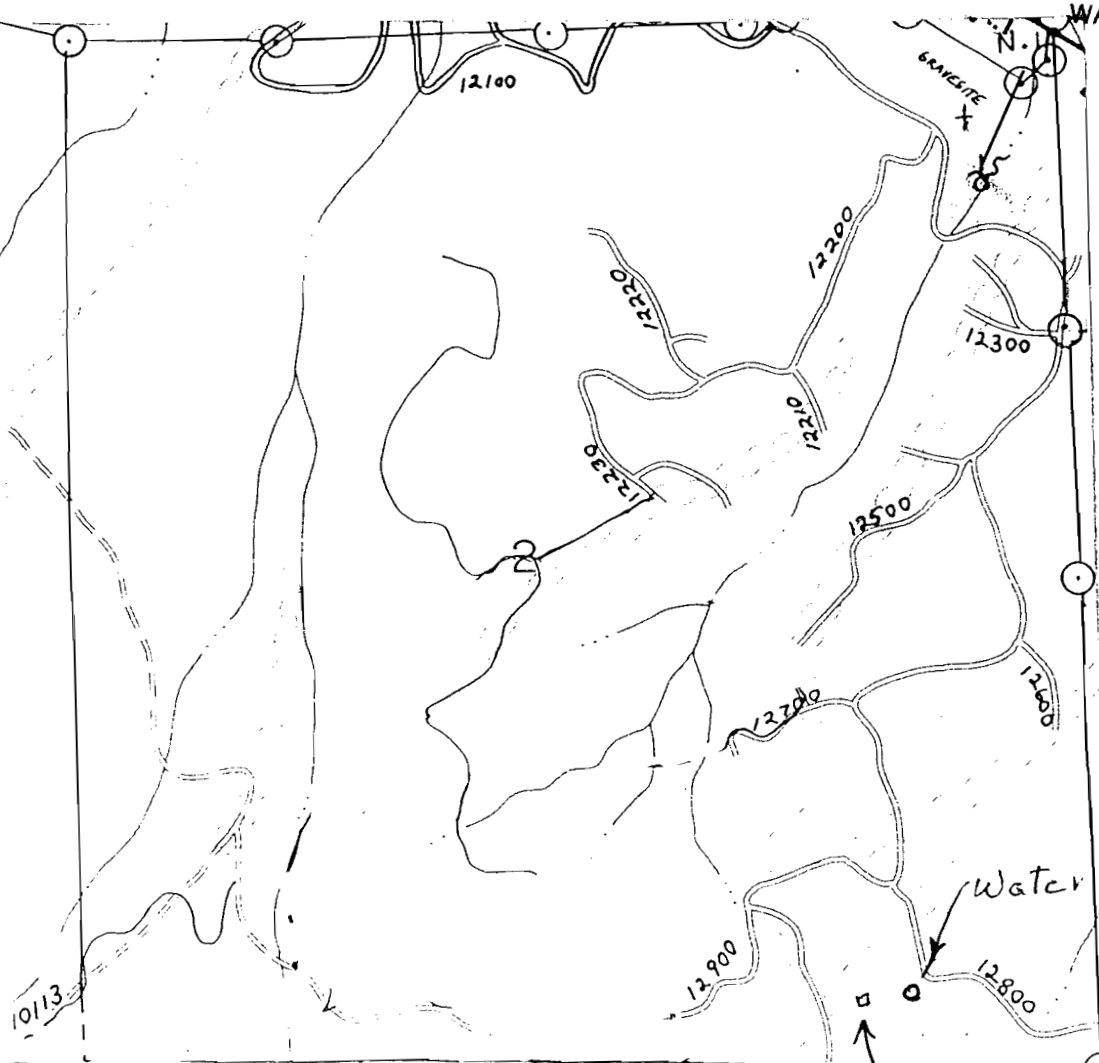
Township 22S

Range 1W

Forty SE 1/4, SE 1/4

River Basin Coast Fork

Willamette



Water Storage Site

Catch Basin in creek bed

3A Gallons of Water Stored: 10,000

Purpose of Impounded Water:

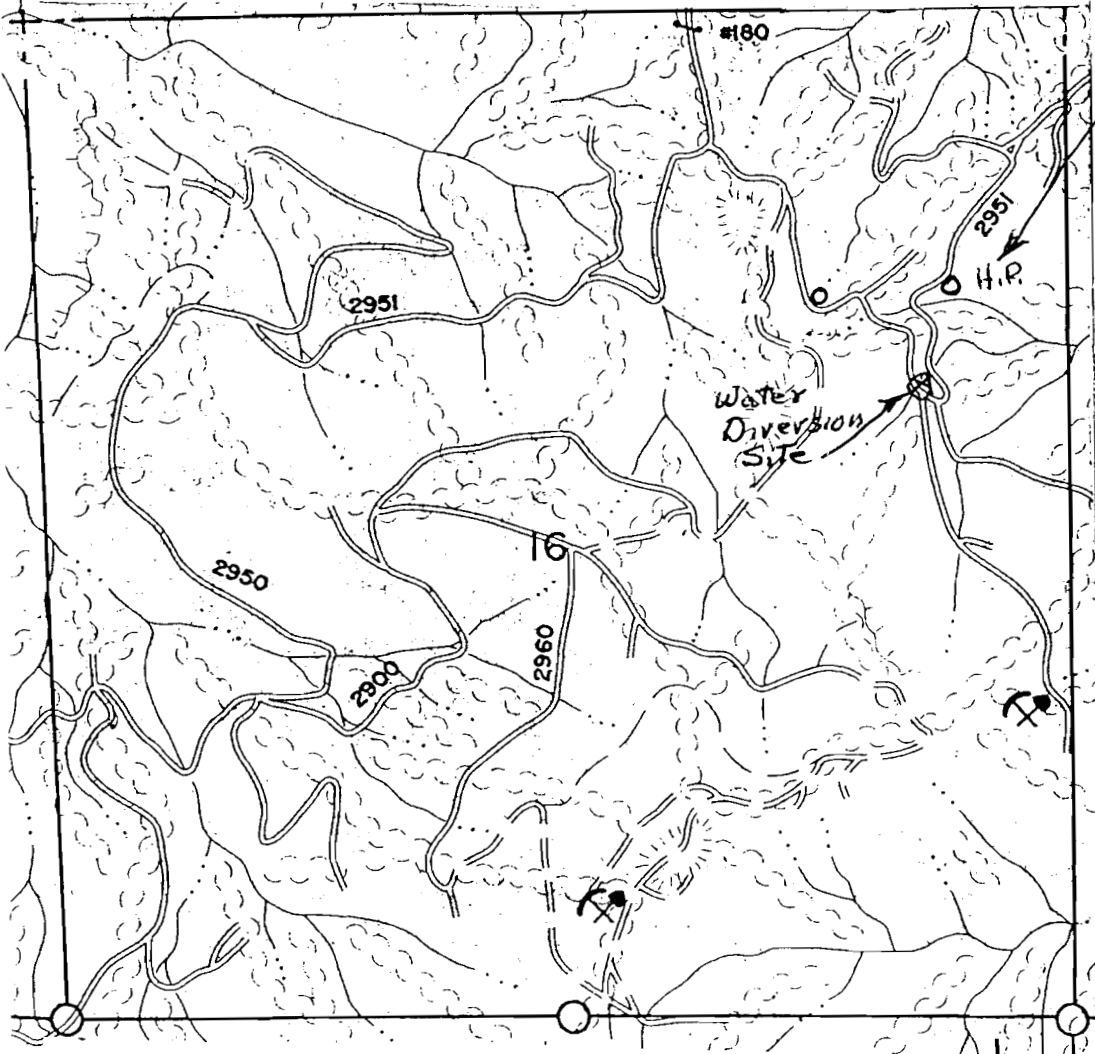
1. Emergency Fire Suppression
2. \_\_\_\_\_

Application No. R-75705  
Permit No.

00731

Weyerhaeuser Company  
Willamette Timberlands

Water Storage Site Map



Water Storage Site

NT

Map Scale: 1" = 1000 feet

Section 16

Township 23S

Range 1W

Forty SE1/4 NE1/4

River Basin Coast Fork Willamette

**RECEIVED**

DEC 2 1994

WATER DIVISION  
SALEM, OREGON

Gallons of Water Stored: 20,000

Purpose of Impounded Water:

1. Emergency Fire Suppression
2. \_\_\_\_\_



Application No R-75905  
Permit No.

Weyerhaeuser Company  
Willamette Timberlands

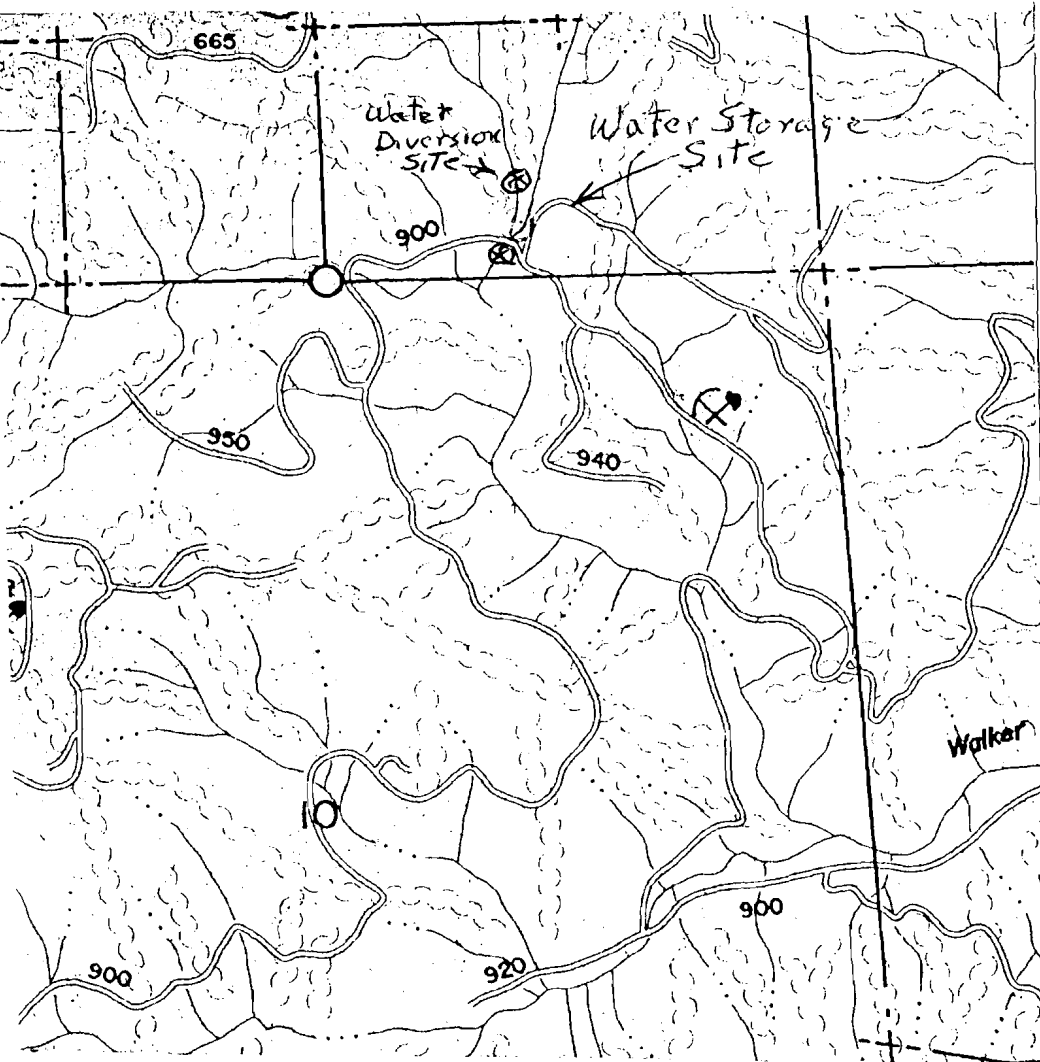
09731

Water Storage Site Map

RECEIVED

DEC 2 1994

WATER DIVISION  
SALEM, OREGON



9 N↑

Map Scale: 1" = 1000 feet

Section 3

Township 23S

Range 1W

Forty SW<sup>1</sup>/<sub>4</sub>, SE<sup>1</sup>/<sub>4</sub>

River Basin Coast Fork

Willamette

Gallons of Water Stored: 10,000

Purpose of Impounded Water:

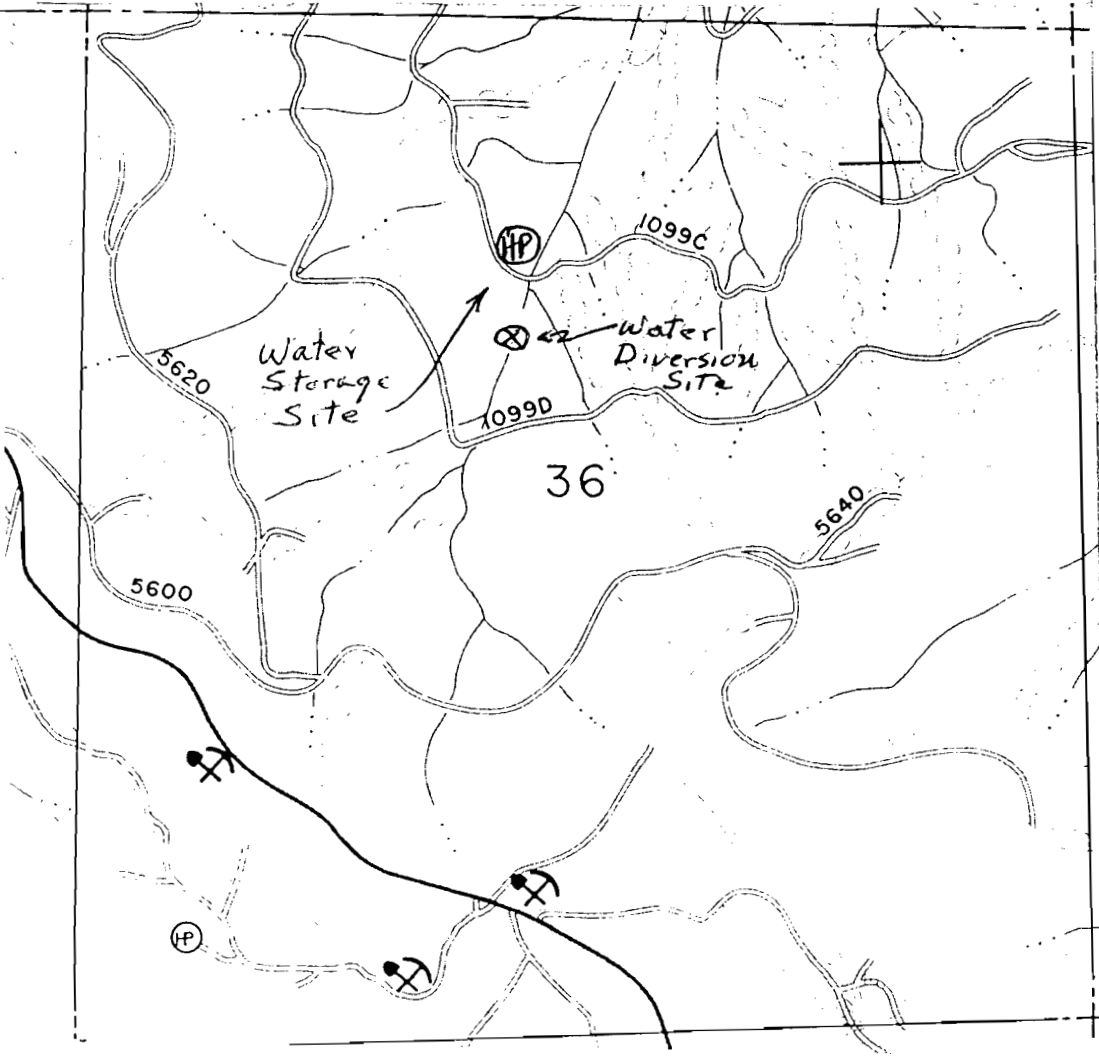
1. Emergency Fire Suppression
- 2.

09731

Application No. R-75905  
Form No.

# Weyerhaeuser Company Willamette Timberlands

## Water Storage Site Map



10 N↑

Map Scale: 1" = 1000 feet

Section 36

Township 23S

Range 2W

Forty NE 1/4, NW 1/4

River Basin Coast Fork  
Willamette

**RECEIVED**

DEC 20 1994

WATER RESOURCES DEPT.  
SALEM, OREGON

Gallons of Water Stored: 10,000

Purpose of Impounded Water:

1. Emergency Fire Suppression
- 2.