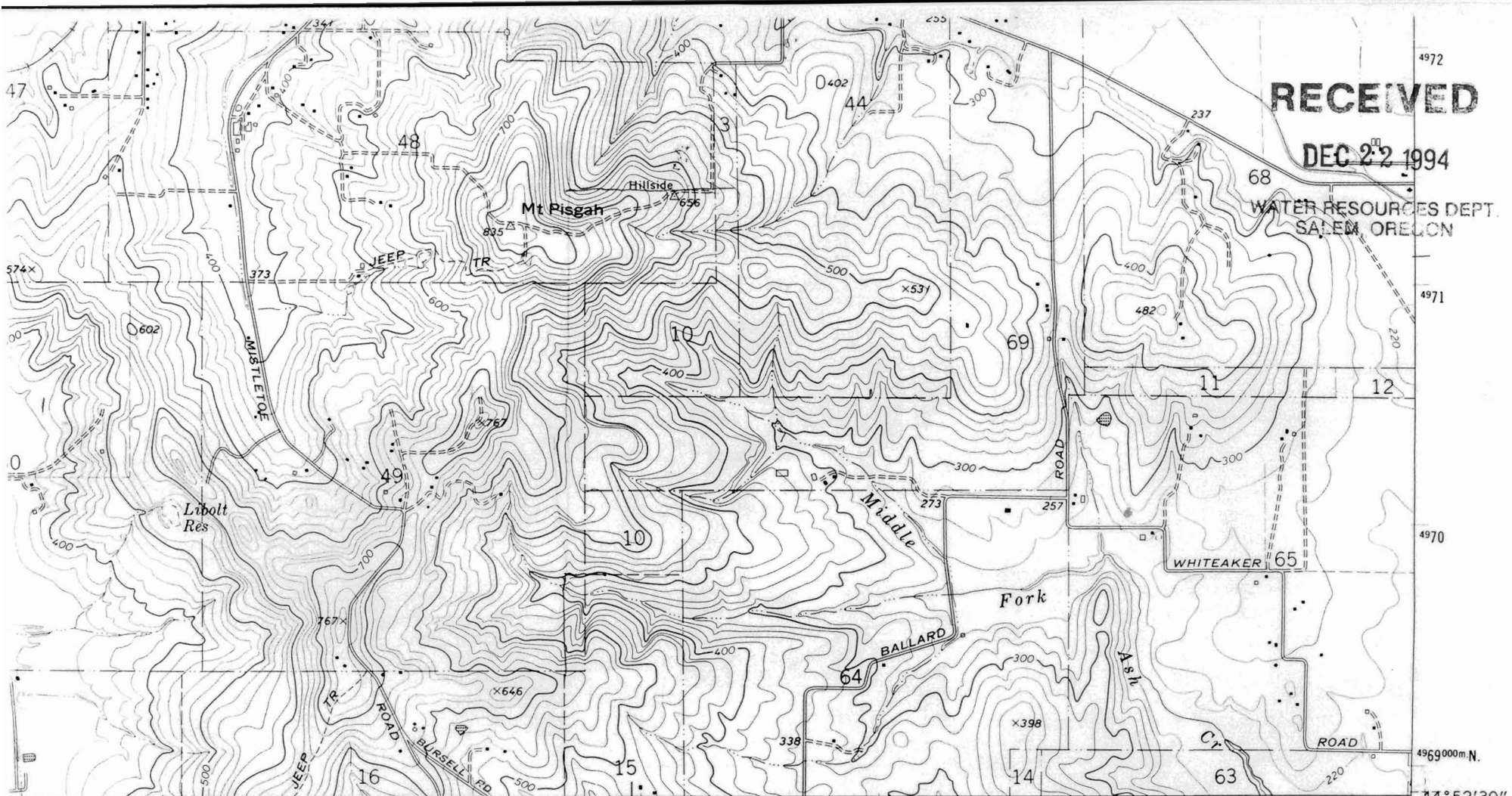


RECEIVED

DEC 22 1994

WATER RESOURCES DEPT.
SALEM OREGON



475 (AIRLIE NORTH)
1373 IV SE

476

17'30"

478

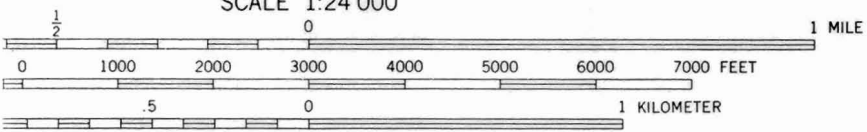
● INTERIOR—GEOLOGICAL SURVEY, RESTON, VIRGINIA—1987
479000m.E.

123° 15'

44° 52' 30"

4969000m.N.

SCALE 1:24 000



ROAD CLASSIFICATION

- Primary highway, hard surface
- Secondary highway, hard surface
- Light-duty road, hard or improved surface
- Unimproved road
- Interstate Route
- U. S. Route
- State Route

CONTOUR INTERVAL 20 FEET
DOTTED LINES REPRESENT 10-FOOT CONTOURS
NATIONAL GEODETIC VERTICAL DATUM OF 1929



QUADRANGLE LOCATION

Revisions shown in purple compiled from aerial photographs taken 1982 and other sources
This information not field checked. Map edited 1986

DALLAS, OREG.
NE/4 DALLAS 15' QUADRANGLE

44123-H3-TF-024

1974
PHOTOREVISED 1986
DMA 1373 IV NE-SERIES V892

THIS MAP COMPLIES WITH NATIONAL MAP ACCURACY STANDARDS
GEOLOGICAL SURVEY, DENVER, COLORADO 80225, OR RESTON, VIRGINIA 22092
DESCRIBING TOPOGRAPHIC MAPS AND SYMBOLS IS AVAILABLE ON REQUEST

Application No R-75724
Permit No.

"CERTIFICATE NO.

69748

(MONMOUTH)
1373 I SW

Permit No. 69748
Application No. R-75724
CERTIFICATE NO.

