

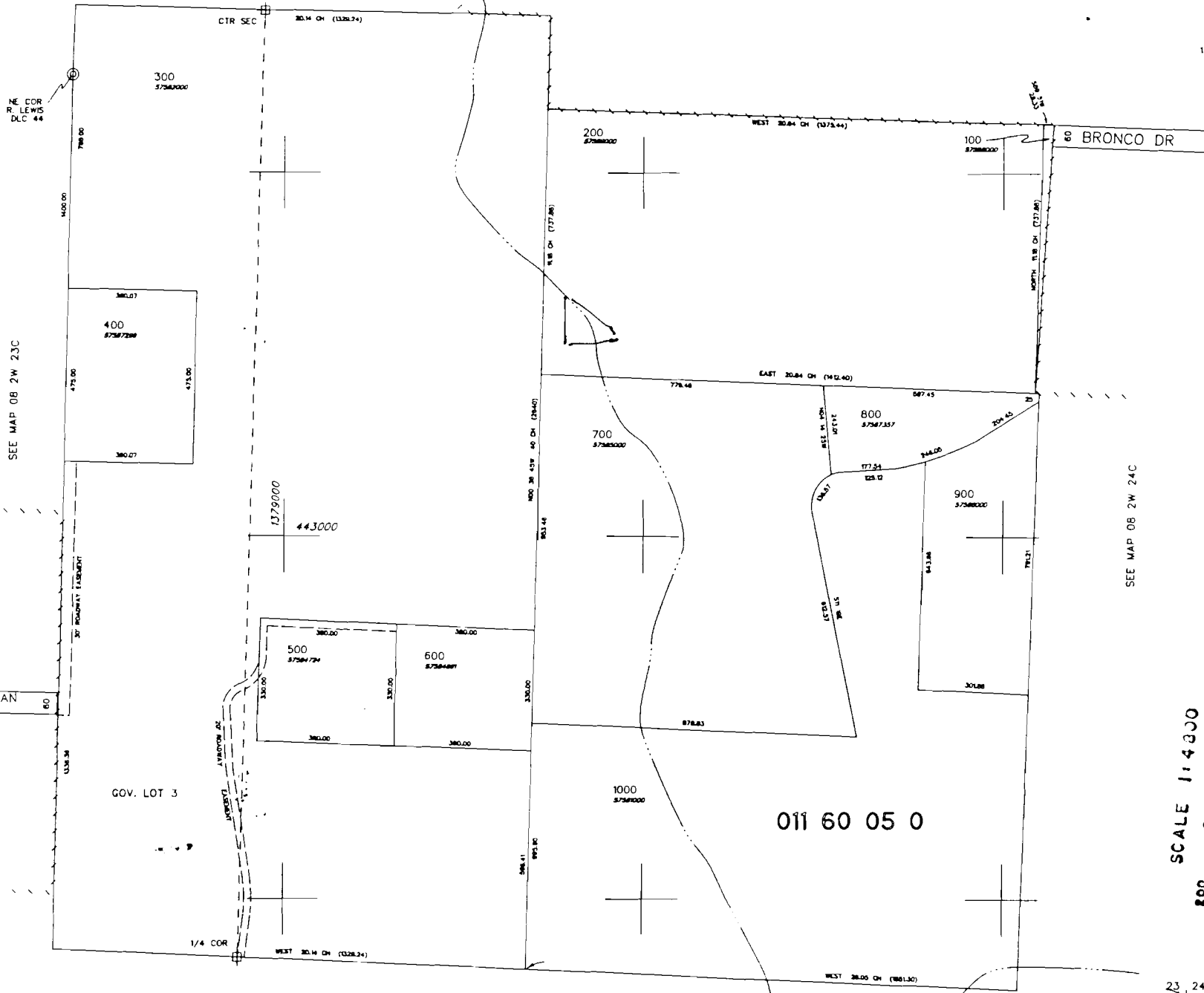
MARION COUNTY, OREGON

08 24 230
RECEIVED

DEC 22 1994

WATER RESOURCES DEPT
SALEM, OREGON

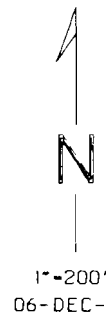
SEE MAP 08 2W 23A



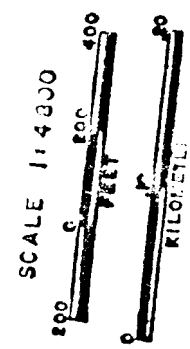
SEE MAP 08 2W 23C

SEE MAP 08 2W 24C

SEE MAP 08 2W 26A



1"=200'
06-DEC-90



Application No. K 75738

69751

25 24
26 25

RECEIVED
JUN 11 1994
DEPT. OF ALTERNATIVE
ASSESSMENT
OREGON
JUL 07