

SECTION 19 T.27S. R.4W. W.M.
DOUGLAS COUNTY

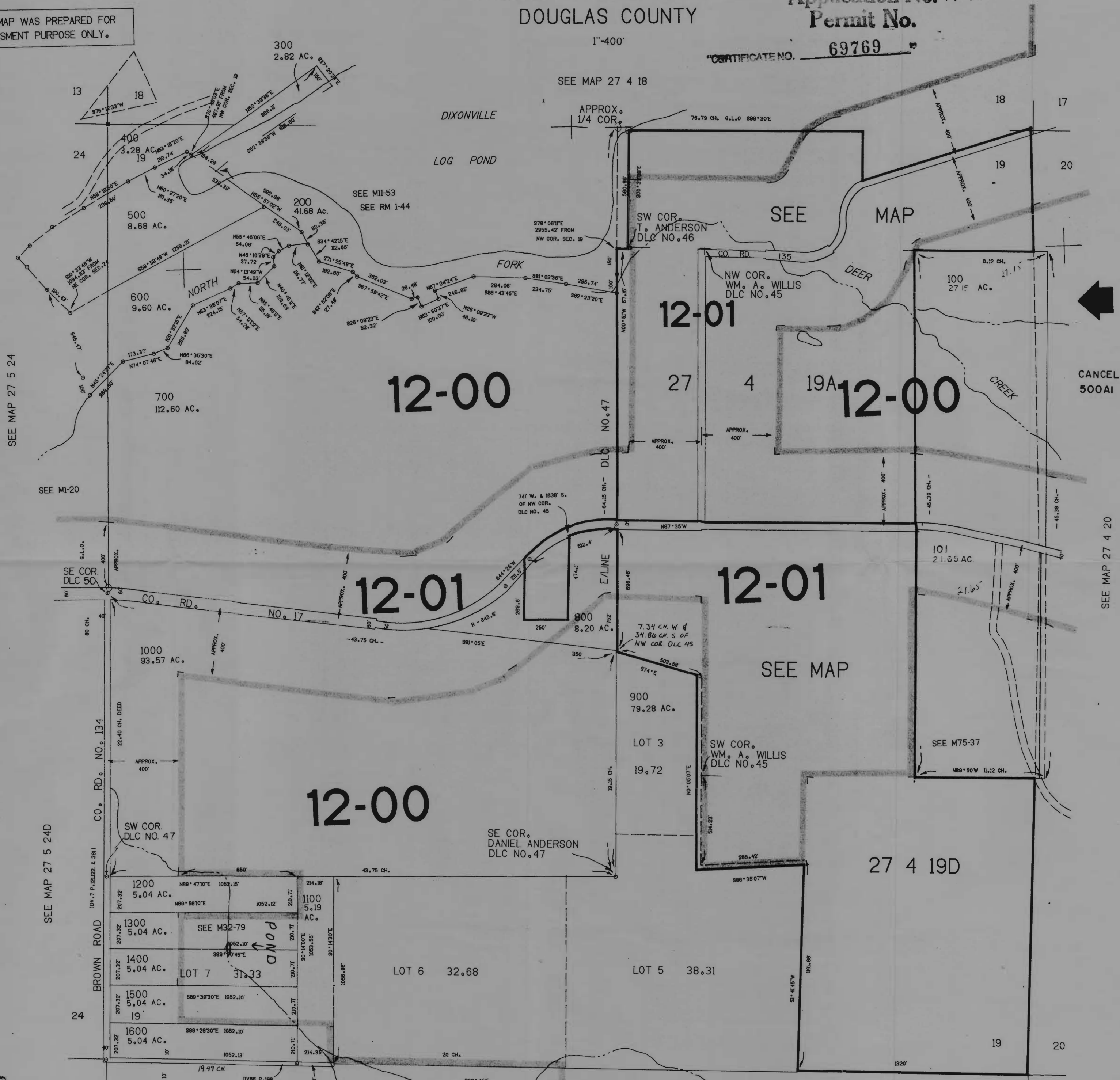
Application No. R-75754
Permit No.

27 4 19
& INDEX

THIS MAP WAS PREPARED FOR
ASSESSMENT PURPOSE ONLY.

1"=400'

CERTIFICATE NO. 69769



SEE MAP 27 5 24

SEE M1-20

SEE MAP 27 5 24D

SEE MAP 27 4 30

SEE MAP 27 4 20

RECEIVED
DEC 21 1994
RESOURCES
EM, OREGON

1274,000

27 4 19
& INDEX