

SE 1/4 SEC. 26 T.30S. R.6W. W.M.  
DOUGLAS COUNTY

30 6 26D

Application No. R-15757  
Permit No.

1" = 200'

This map was prepared for  
assessment purposes only.

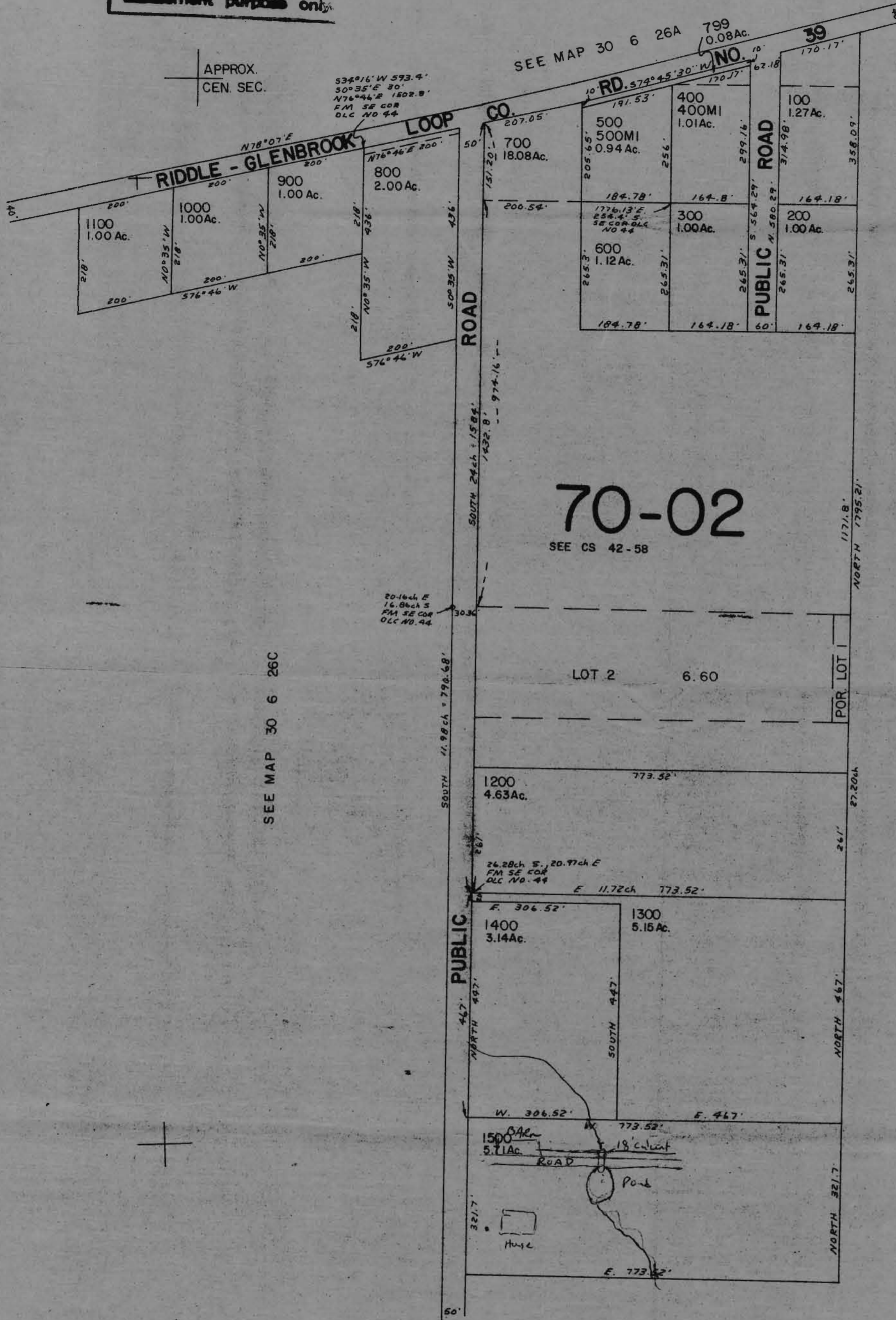
SSE COR.  
I. NICHOLS  
DLC. NO. 44

NE COR.  
DLC. NO. 42

APPROX.  
CEN. SEC.

CERTIFICATE NO. 69770

APPROX.  
1/4 COR.



INT. ELL. COR.  
DLC. NO. 42

SW COR.  
DLC. NO. 43

ENE COR.  
WM. HAWKINS  
DLC. NO. 42

SEE MAP 30 6 26C

SEE MAP 30 6 26

SE. COR.  
J. CATCHING  
DLC. NO. 43

473,000

RECEIVED

DEC 21 1994

WATER RESOURCES DEPT.  
SALEM, OREGON

26 | 25

35 | 36

30 6 26D

32,000

SEE MAP 30 6 35

S89°43'W 40ch 610