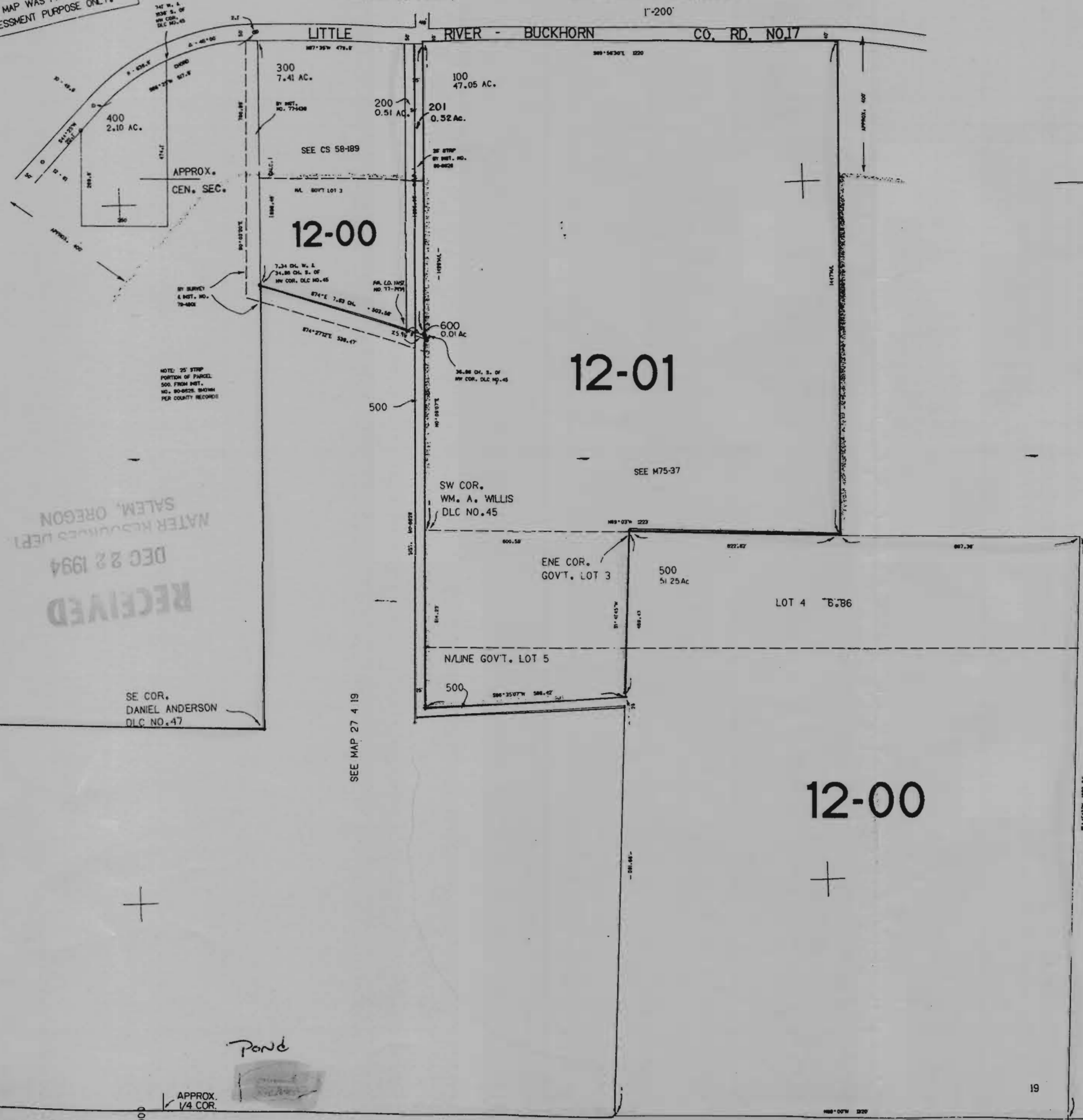


THIS MAP WAS PREPARED FOR
ASSESSMENT PURPOSE ONLY.

SEE MAP 27 4 19A

1"=200'

LITTLE RIVER - BUCKHORN CO. RD. NO.17



Application No. R-75770
Permit No.

CERTIFICATE NO. 69781

RECEIVED
DEC 22 1994
WATER RESOURCES DEPT
SALEM, OREGON

Pond

APPROX. 1/4 COR.
1.276.000

126.8 ac.

571.000

27 4 19D

SEE MAP 27 4 30

19 20
30 29