

NW1/4 SEC.24 T.25S. R.5W. W.M.
DOUGLAS COUNTY

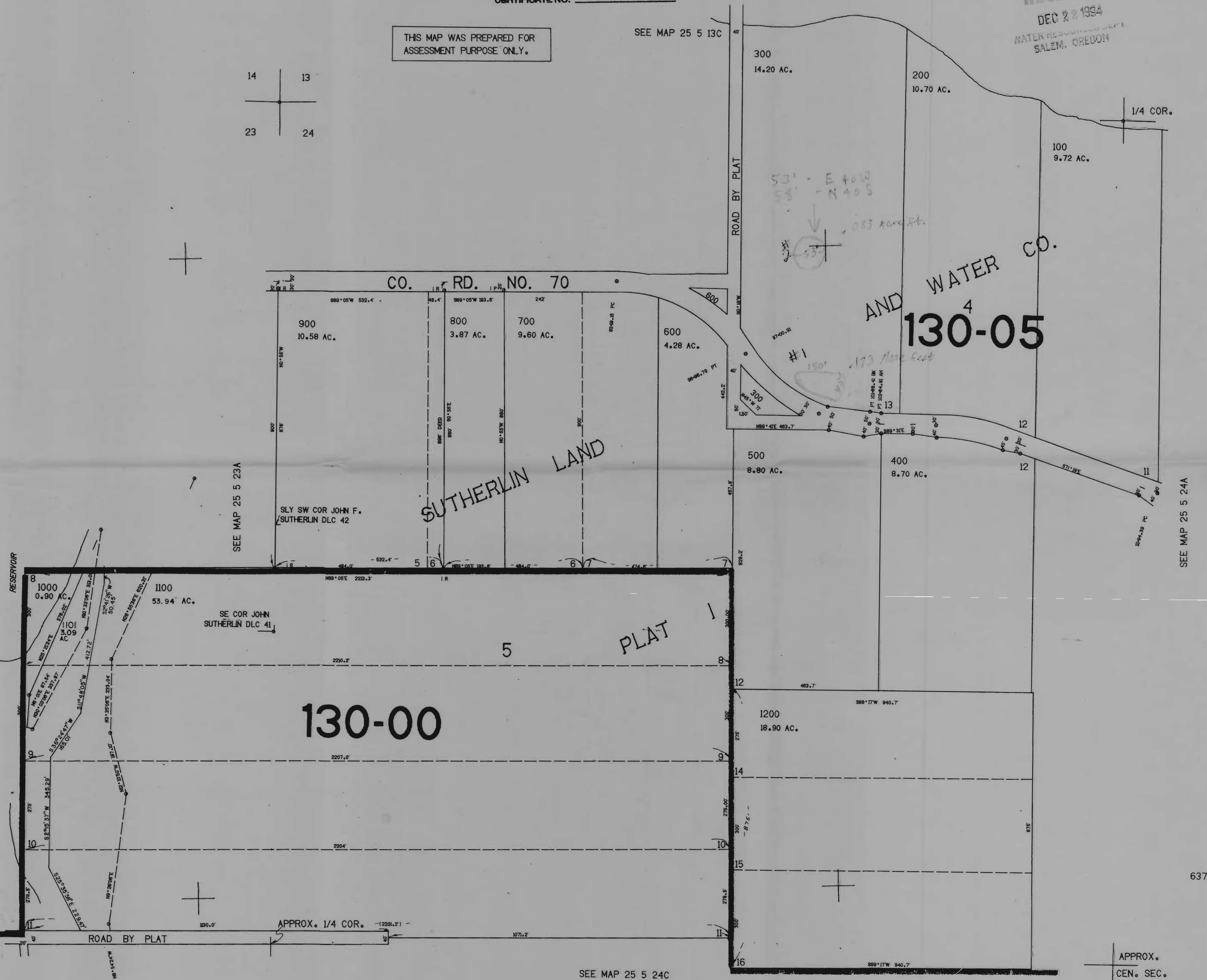
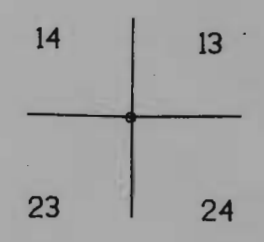
Application No. R-75776
Permit No.
REVISED ON
7-5-91

25 5 24B

CERTIFICATE NO. 69787 1"-200'

THIS MAP WAS PREPARED FOR
ASSESSMENT PURPOSE ONLY.

RECEIVED
DEC 22 1994
WATER RESOURCES DEPT.
SALEM, OREGON



130-00

130-05

PLAT 1

SEE MAP 25 5 24C

SEE MAP 25 5 24A

APPROX.
CEN. SEC.
25 5 24B

272.000