

RECEIVED

SECTION 32 T.24S. R.7W. W.M.
DOUGLAS COUNTY

DEC 22 1994
WATER RESOURCES DEPT.
SALEM, OREGON

24 7 32

THIS MAP WAS PREPARED FOR
ASSESSMENT PURPOSE ONLY.

1"=400'

CERTIFICATE NO. 69794

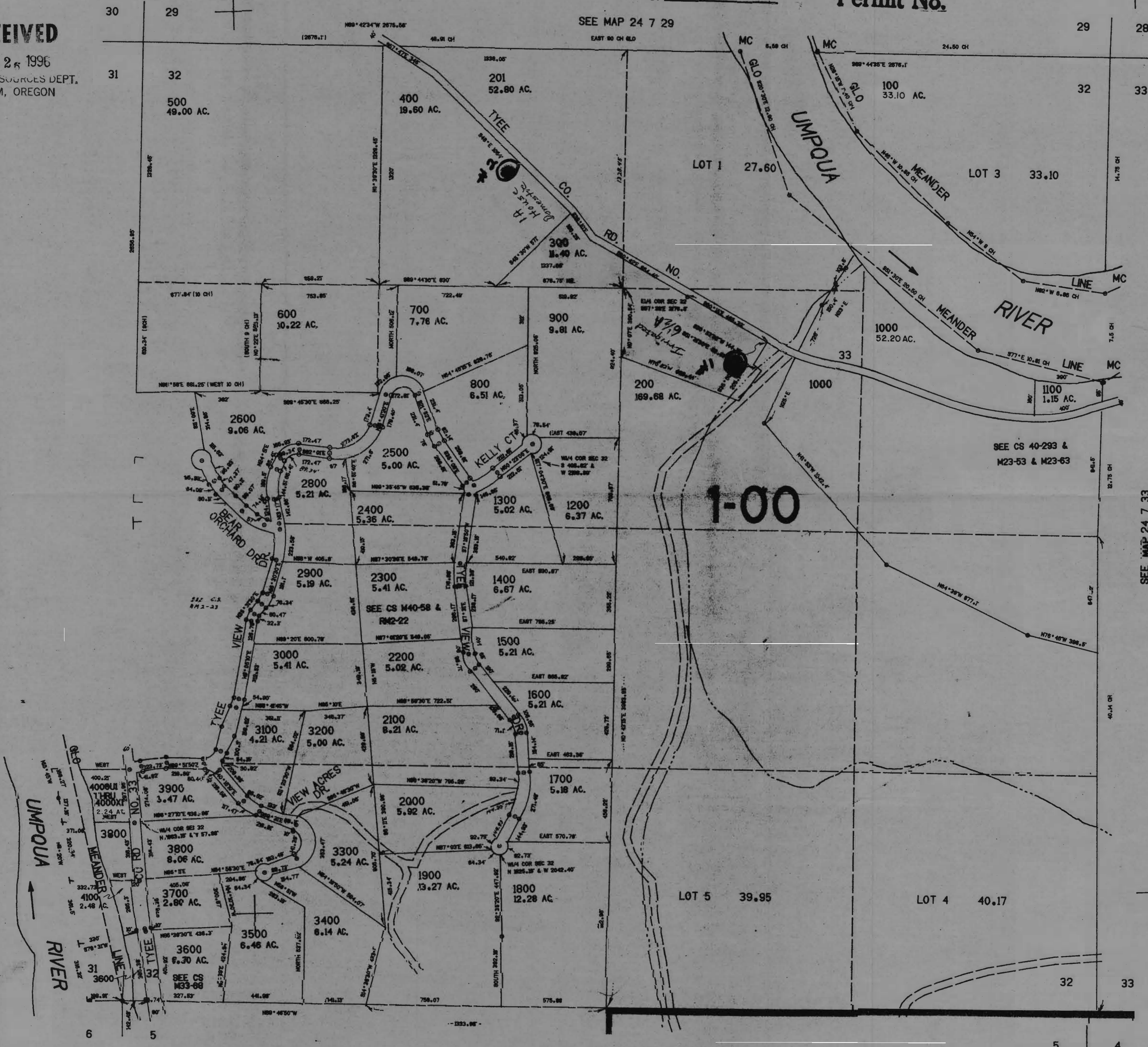
Application No. R-15784
Permit No.

RECEIVED
JAN 25 1996
WATER RESOURCES DEPT.
SALEM, OREGON

CANCELLED
2700

SEE MAP 24 7 31

SEE MAP 24 7 33



SEE MAP 24 7 5

24 7 32

1187,000