

SECTION 19 T.29S. R.3W. W.M.  
DOUGLAS COUNTY

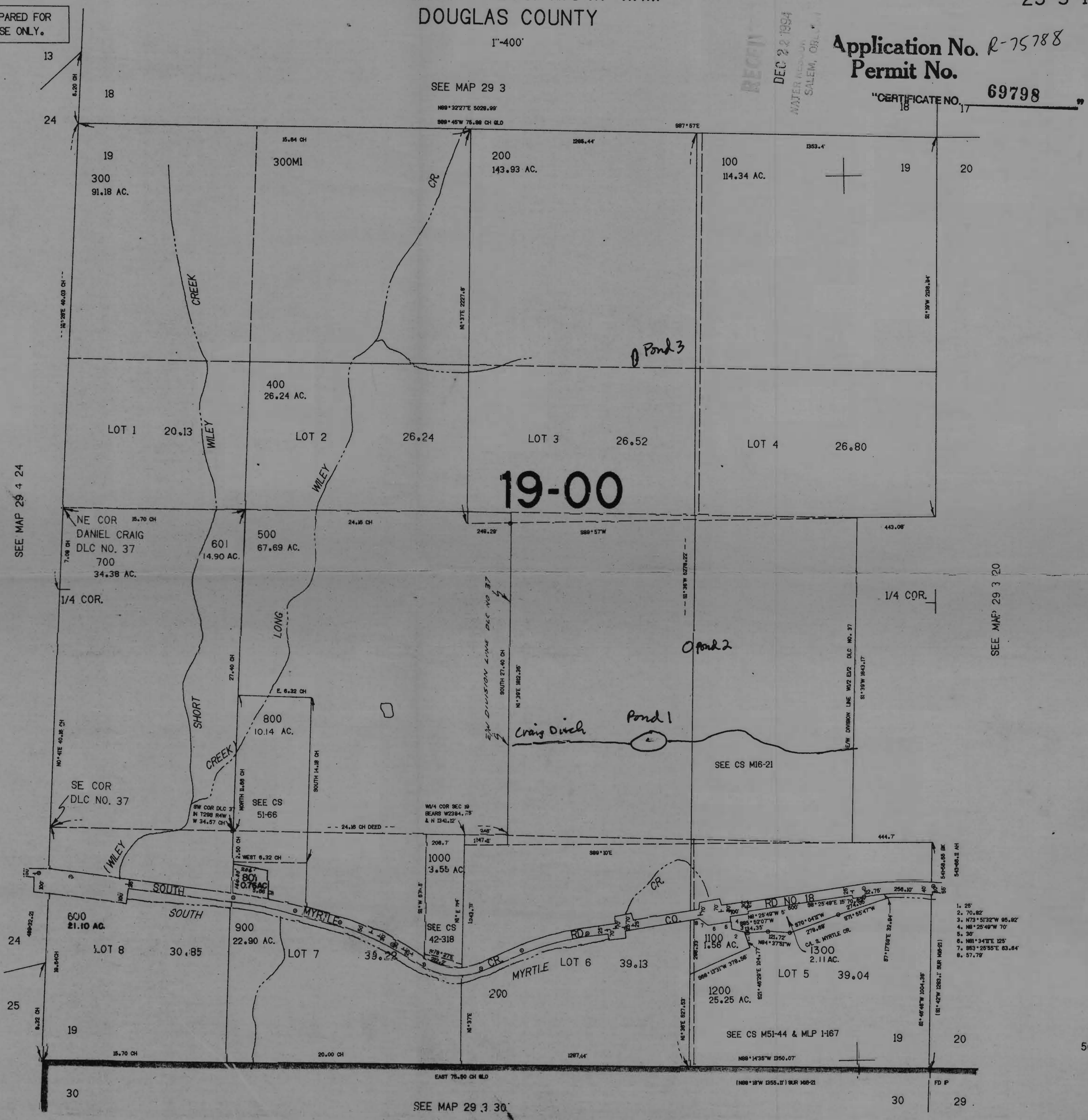
THIS MAP WAS PREPARED FOR  
ASSESSMENT PURPOSE ONLY.

1"=400'

Application No. R-75788  
Permit No.

"CERTIFICATE NO. 69798"

RECEIVED  
DEC 22 1994  
WATER RESOURCES  
SALEM, ORE.



SEE MAP 29 4 24

SEE MAP 29 3 20

19-00

- 1. 25'
- 2. 70.82'
- 3. N73°51'32\"W 95.82'
- 4. N8°25'49\"W 70'
- 5. 30'
- 6. N81°34'17\"E 125'
- 7. S83°25'55\"E 63.64'
- 8. 57.79'

SEE MAP 29 3 30

1305000