

SE1/4 SW1/4 SEC.21 TWP.7 S. RGE.2 W. WM
MARION COUNTY, OREGON

7 2W 21CD

RECEIVED

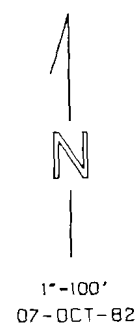
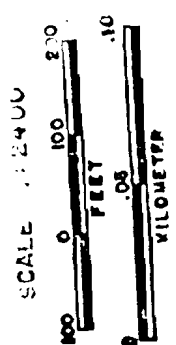
DEC 23 1994

WATER RESOURCES DEPT
SALEM, OREGON

1/16 COR

75843
SEE MAP 7 2W 21C

1/16 COR



ANGLE DRIVE (CR 736)

59TH AVENUE NE

CAPITOL CITY

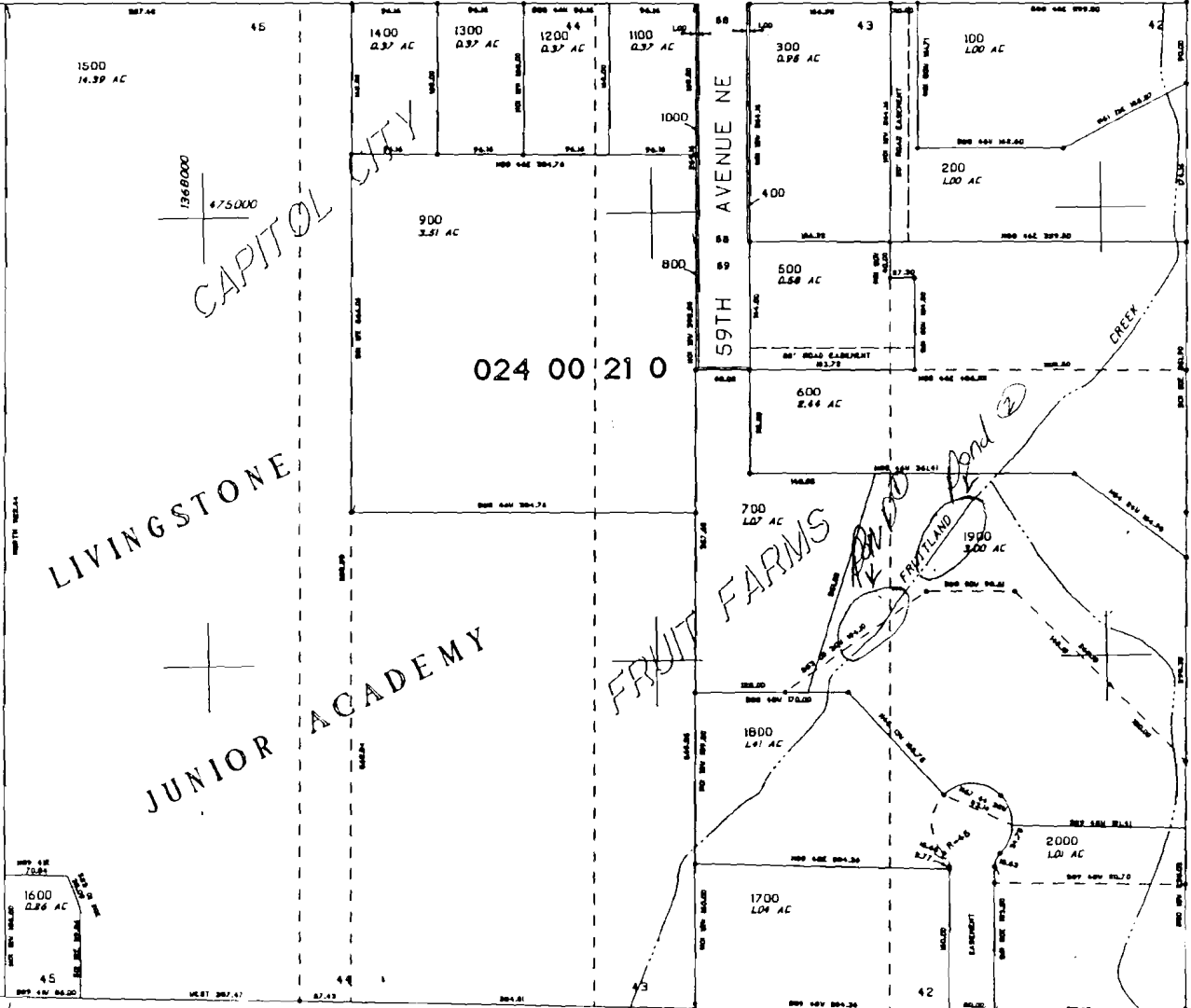
LIVINGSTONE

JUNIOR ACADEMY

FRUIT FARMS

FRUITLAND Pond 2

024 00 21 0



03812
03312

SEE MAP 7 2W 21C

SEE MAP 7 2W 21C

1/16 COR

FRUITLAND ROAD (MR 64)

1/4 COR