

SECTION 3 T.28S. R.7W. W.M.
DOUGLAS COUNTY

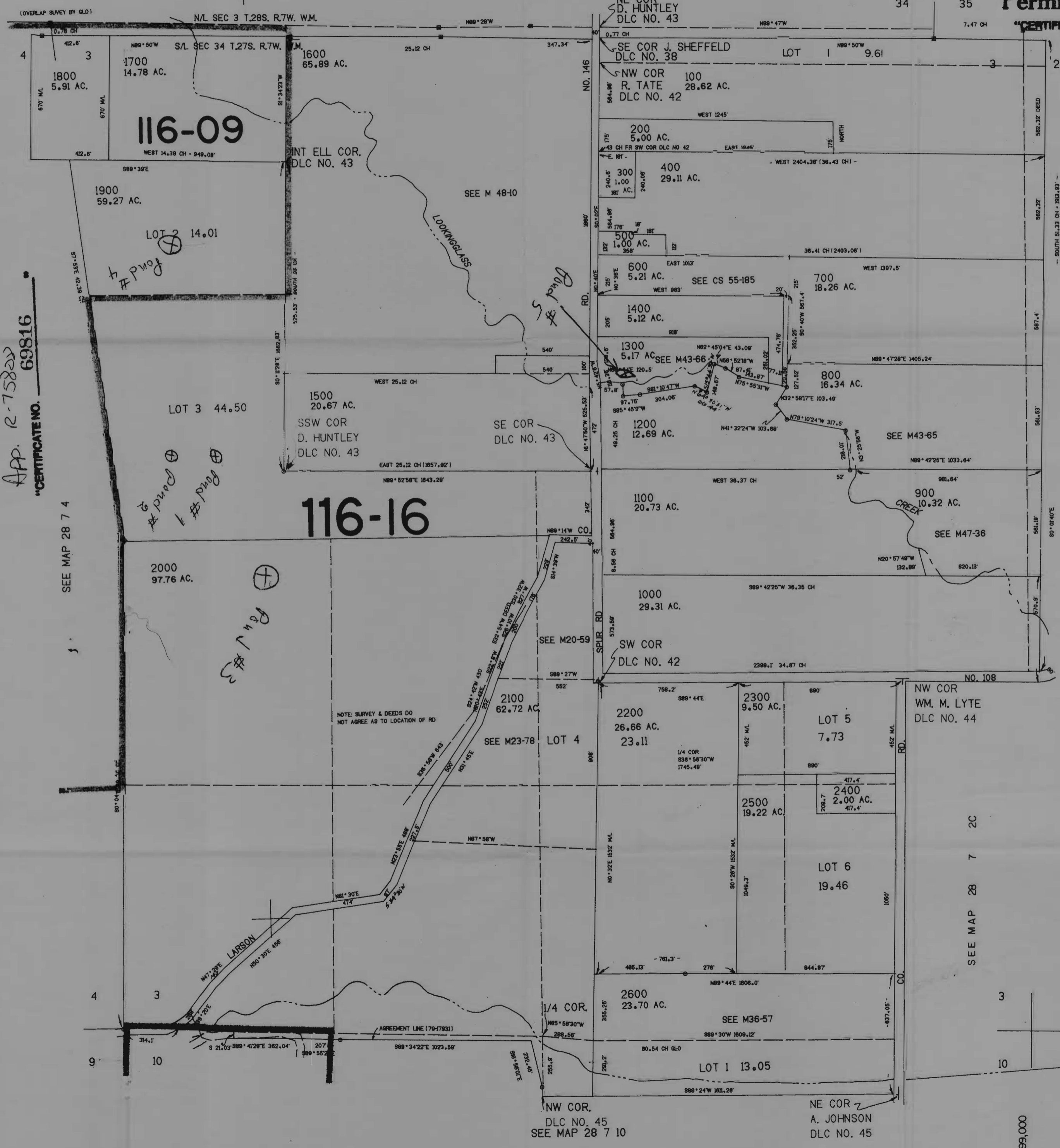
RECEIVED
FEB - 6 1996
28 7 3

REVISED ON
12-18-91
WATER RESOURCES DEPT.
SALEM, OREGON

THIS MAP WAS PREPARED FOR
ASSESSMENT PURPOSE ONLY.

Application No. *R-75808*
Permit No.
"CERTIFICATE NO. 69816"

SEE MAP 27 7 34



App. *R-75808*
"CERTIFICATE NO. 69816"

SEE MAP 28 7 4

SEE MAP 28 7 2

RECEIVED
DEC 22 1994
WATER RESOURCES DEPT.
SALEM, OREGON

558.000

28 7 3

1,199,000