

This map was prepared for assessment purpose only.

SECTION 15 T.29S. R. 6 W. W.M.
DOUGLAS COUNTY

REVISED ON
8-25-94

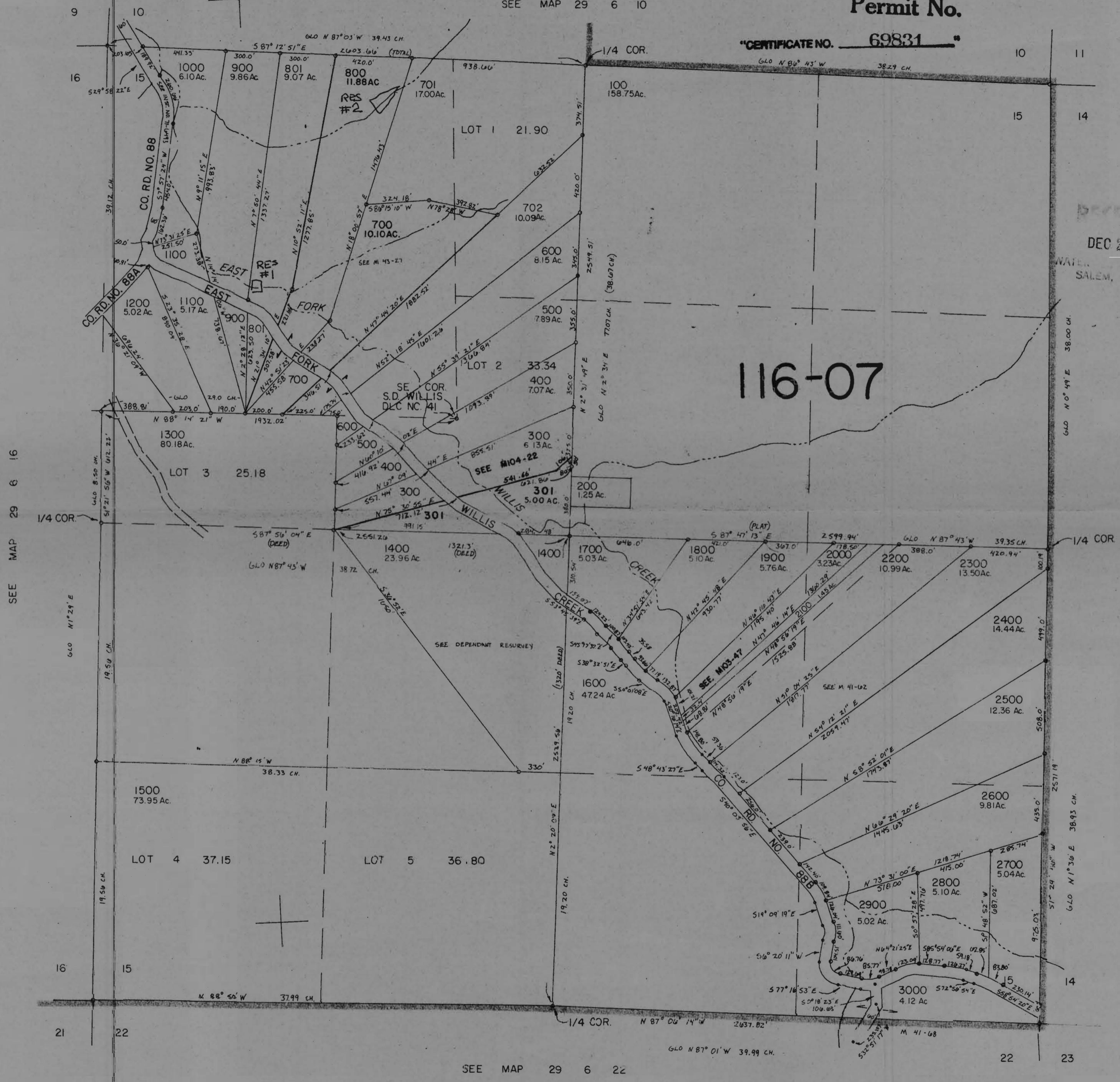
29 6 15

1" = 400'

Application No. R-75828
Permit No.

SEE MAP 29 6 10

"CERTIFICATE NO. 69831"



RECEIVED
DEC 28 1994
WATER RESOURCES DEPT.
SALEM, OREGON

SEE MAP 29 6 16

SEE MAP 29 6 14

SEE MAP 29 6 22

29 6 15

1:230,000