

This map was prepared for assessment purpose only.

SECTION 33 T.3S. R.3E. W.M.
CLACKAMAS COUNTY

Application No. R-75884
Permit No.

3 3E 33

1" = 400'

RECEIVED

DEC 23 1994

WATER RESOURCES DEPT.
SALEM, OREGON

SEE MAP 3 3E 28

69877

CERTIFICATE NO.

21000

28

27

23000

CANCELLED TL NO'S
1100

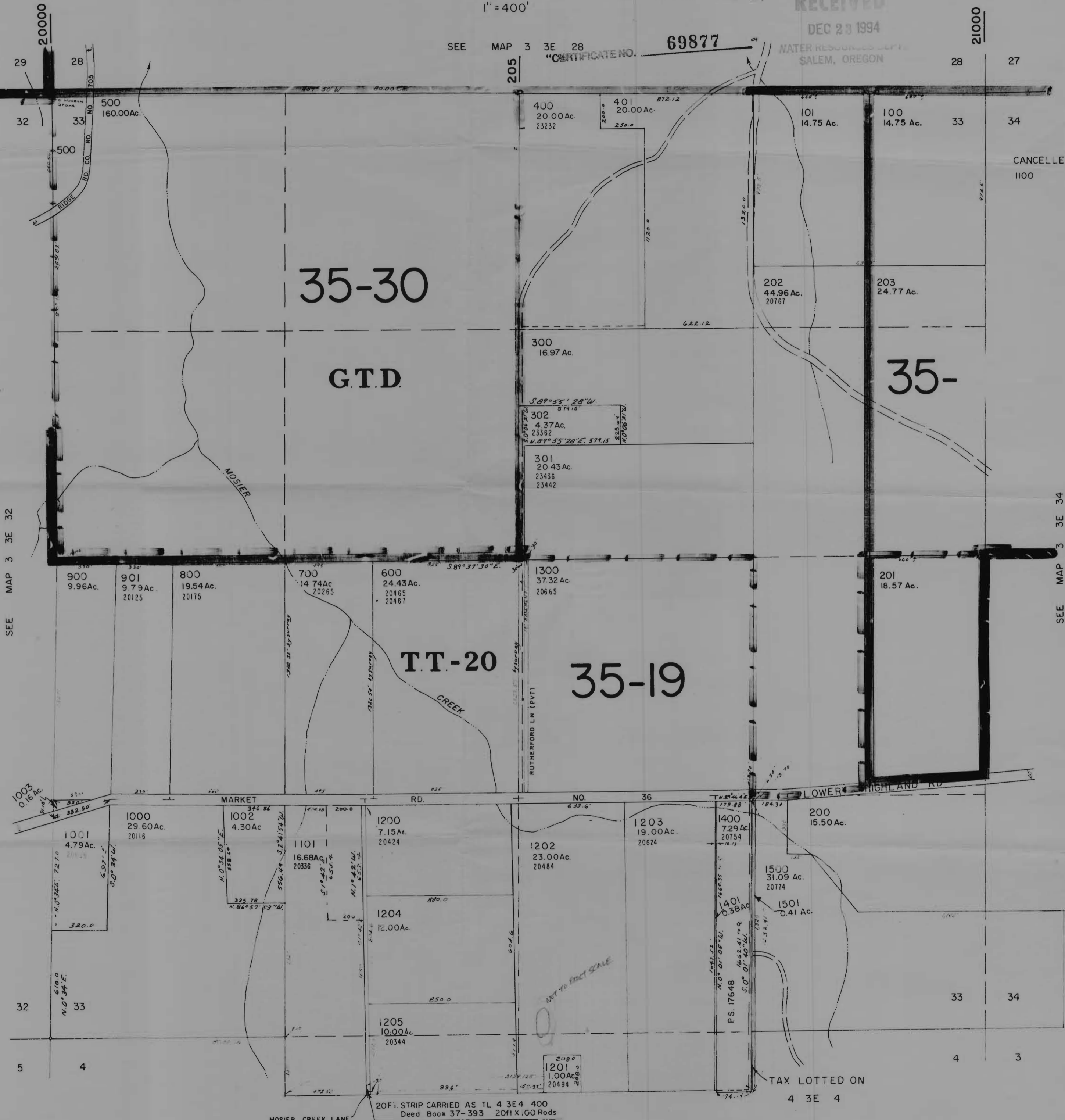
35-30

G.T.D.

35-

35-19

T.T.-20



SEE MAP 3 3E 32

SEE MAP 3 3E 34

23500

TAX LOTTED ON

4 3E 4

20ft. STRIP CARRIED AS TL 4 3E 4 400
Deed Book 37-393 20ft X 100 Rods

MOSIER CREEK LANE

SEE MAP 4 3E 17

3 3E 33
BOOK 31